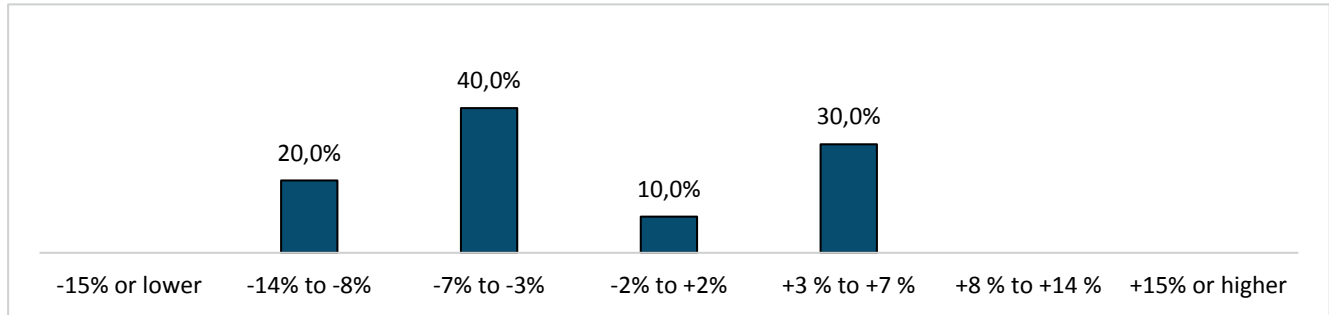


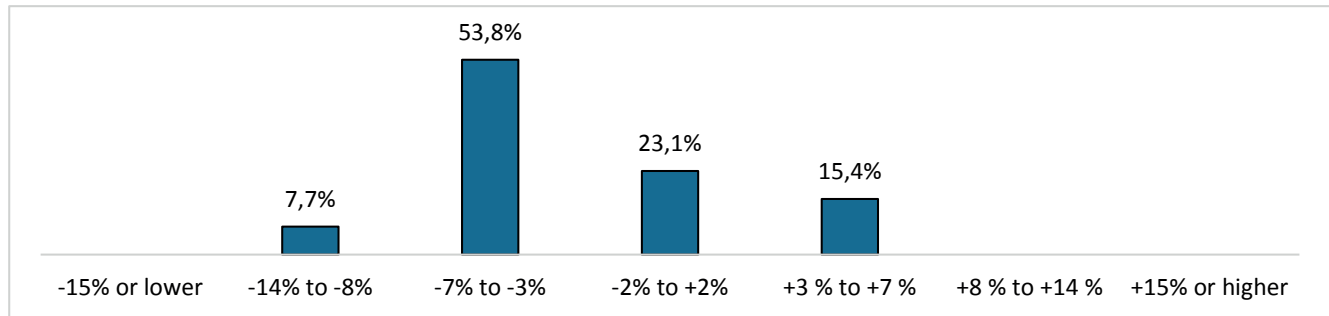
Questions specific to wealth management and institutional asset management

8. Change in assets under management in CHF, 31.12.2014 to 30.6.2015

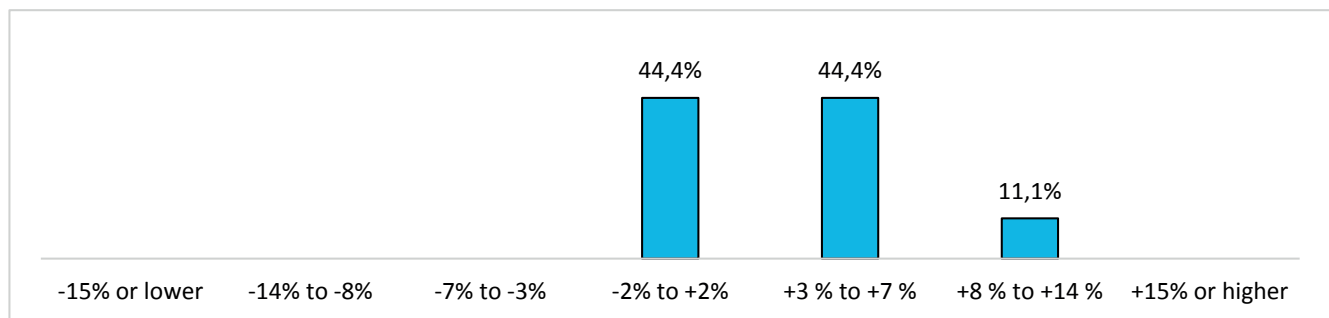
Banks with 200 or more employees



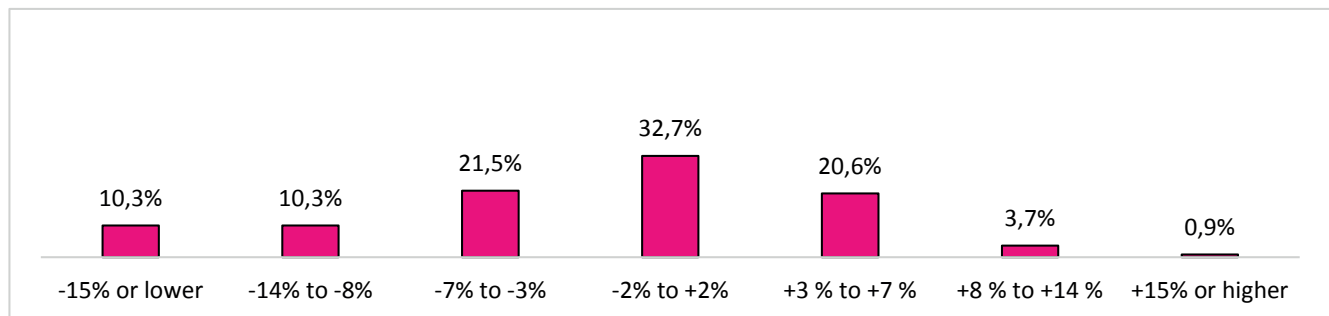
Banks with 50 to 199 employees



Banks with 1 to 49 employees



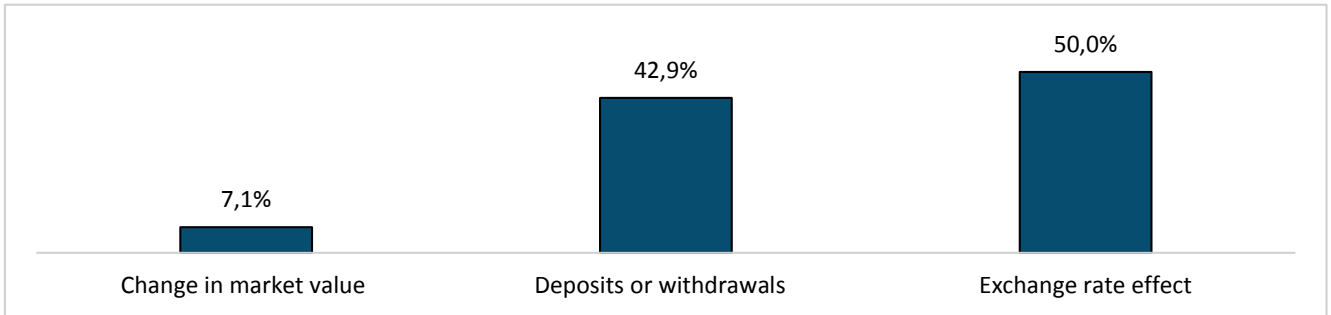
Independent asset managers (all categories)



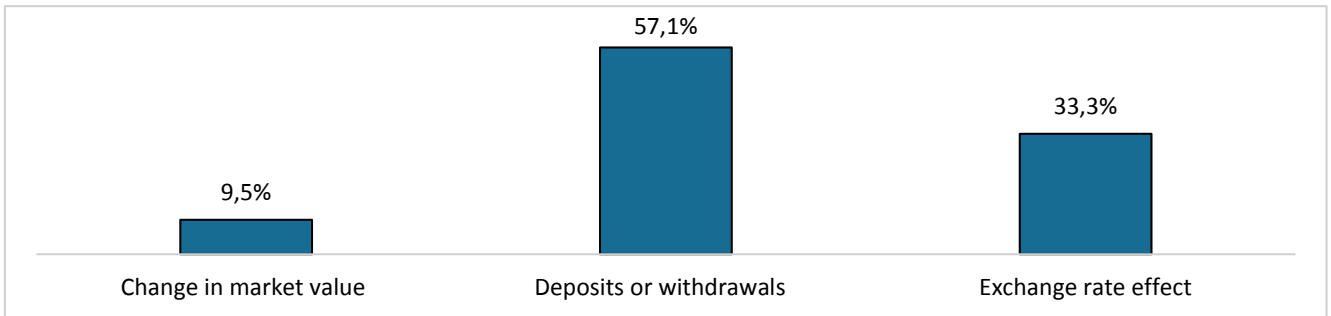
Questions specific to wealth management and institutional asset management

9. Main cause of change was (more than one answer possible)

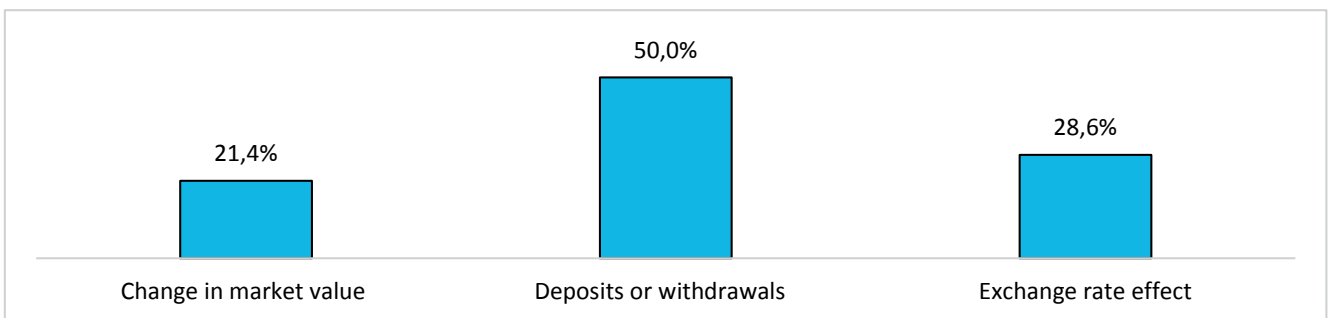
Banks with 200 or more employees



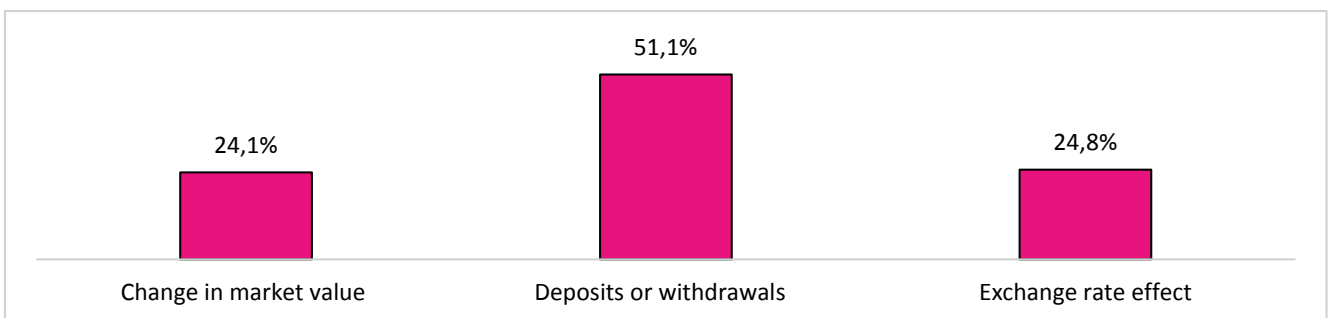
Banks with 50 to 199 employees



Banks with 1 to 49 employees



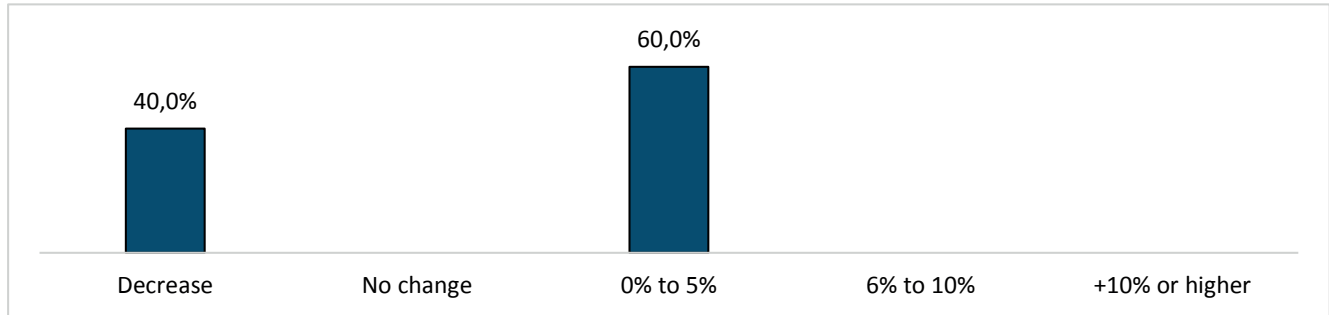
Independent asset managers (all categories)



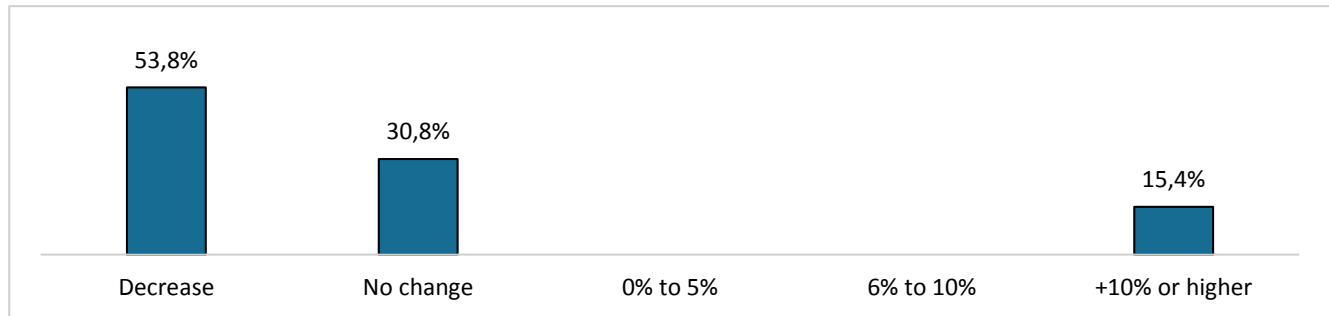
Questions specific to wealth management and institutional asset management

10a. Private asset management: overall change in net deposits, 31.12.2014 to 30.6.2015

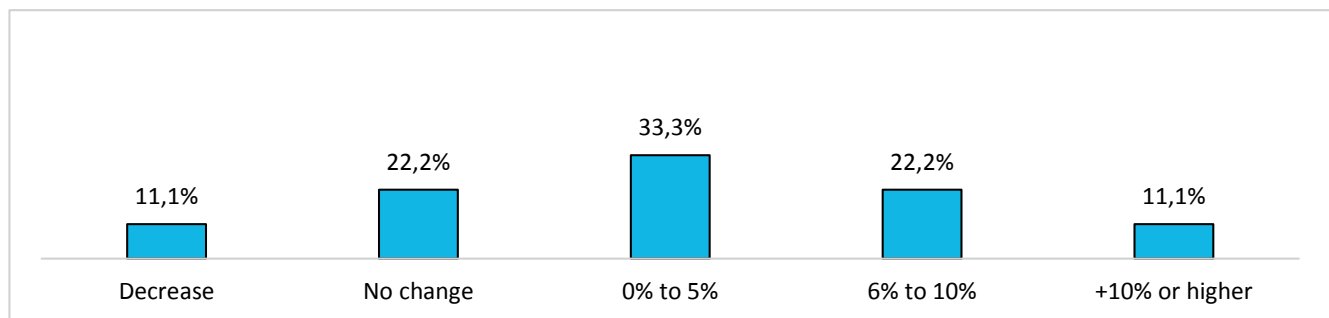
Banks with 200 or more employees



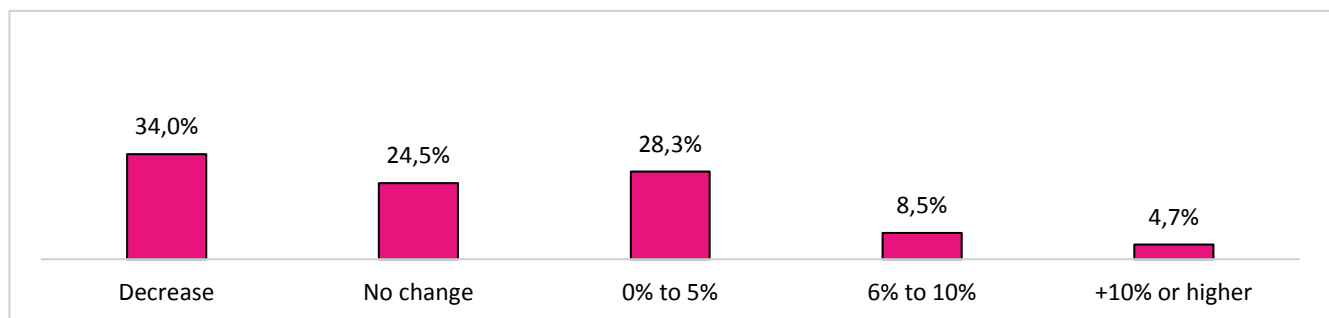
Banks with 50 to 199 employees



Banks with 1 to 49 employees



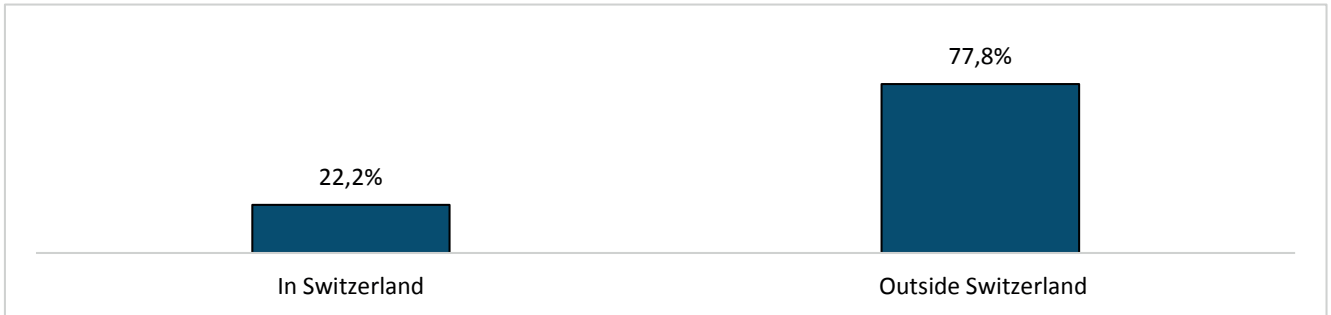
Independent asset managers (all categories)



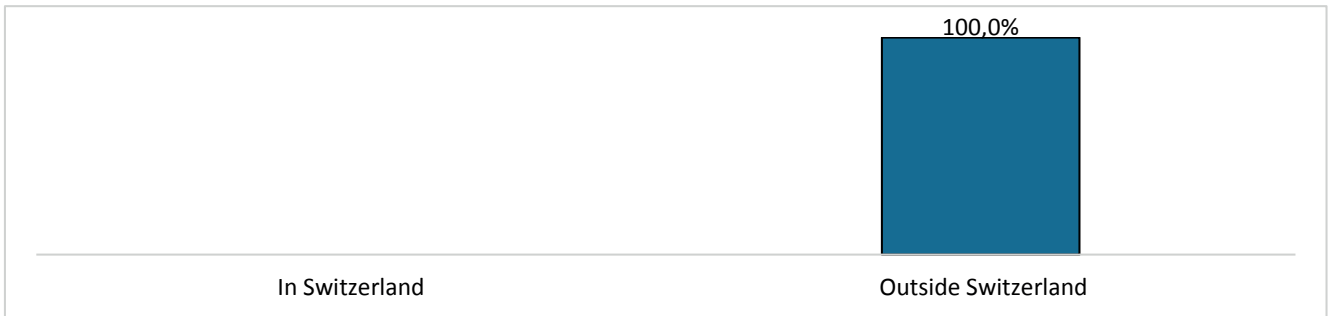
Questions specific to wealth management and institutional asset management

10b. This change in assets was due primarily to clients residing

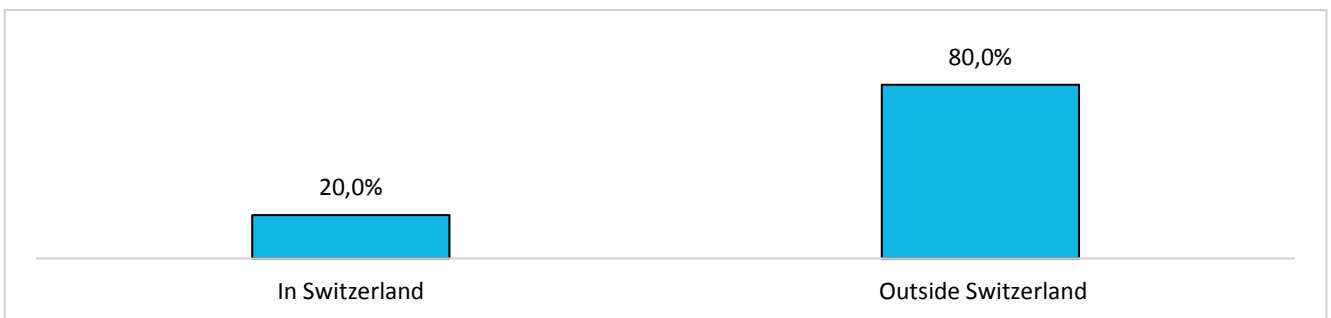
Banks with 200 or more employees



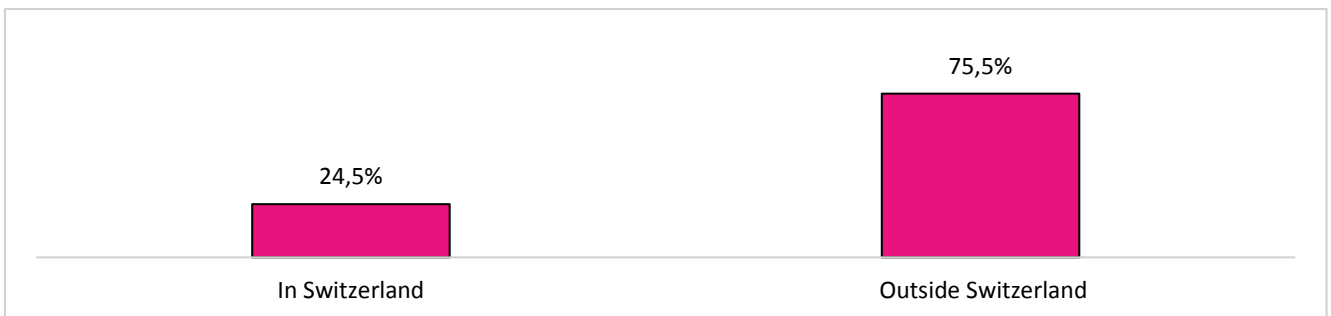
Banks with 50 to 199 employees



Banks with 1 to 49 employees



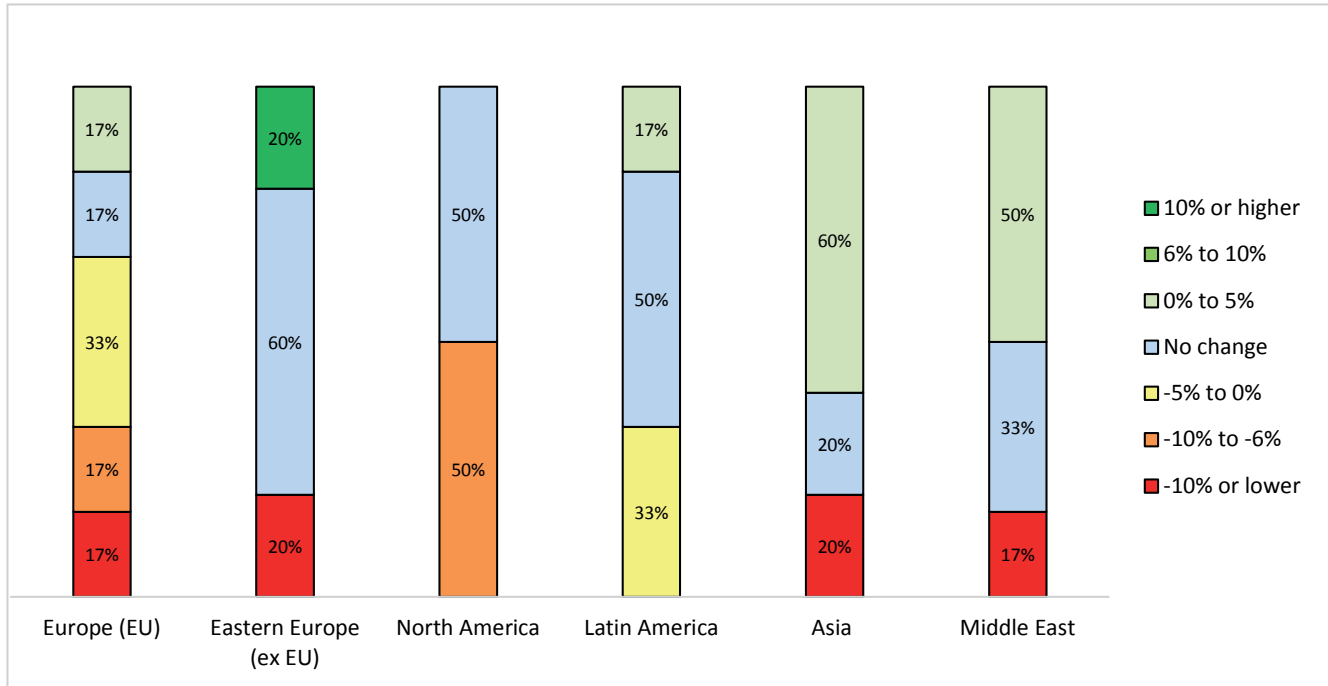
Independent asset managers (all categories)



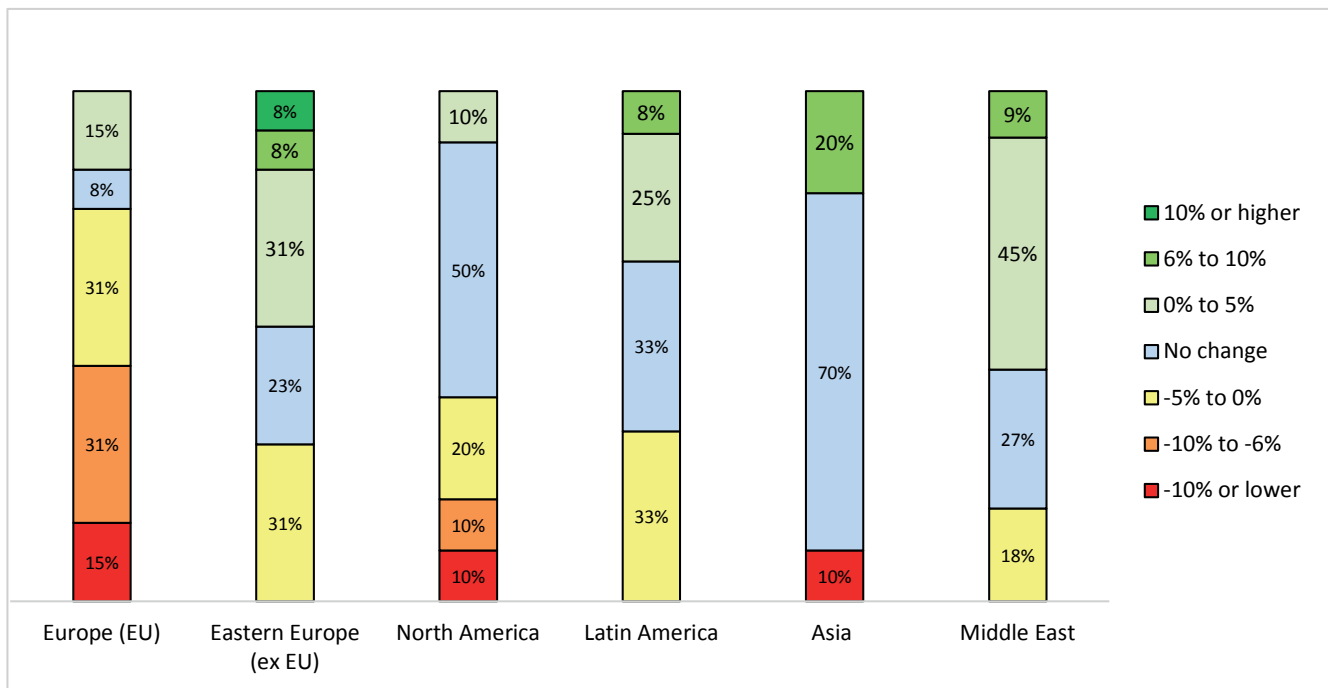
Questions specific to wealth management and institutional asset management

10c. Wealth management: change in net deposits from outside Switzerland, by geographic area

Banks with 200 or more employees



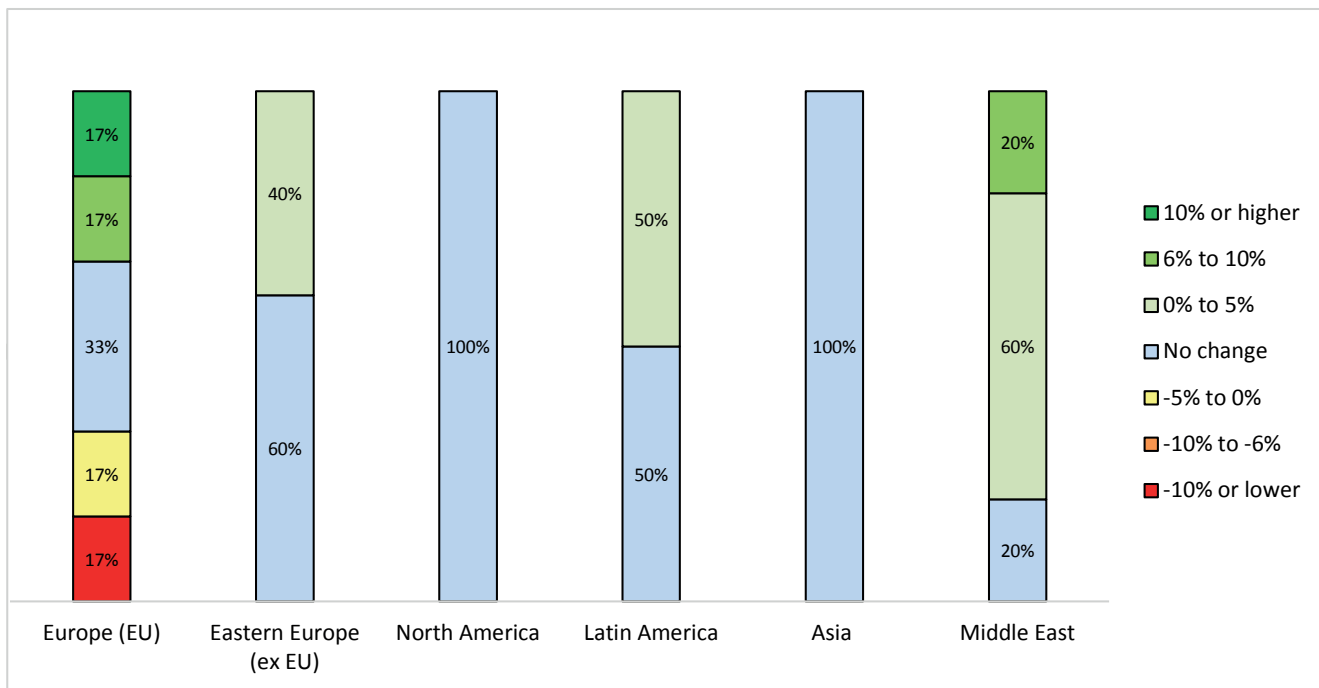
Banks with 50 to 199 employees



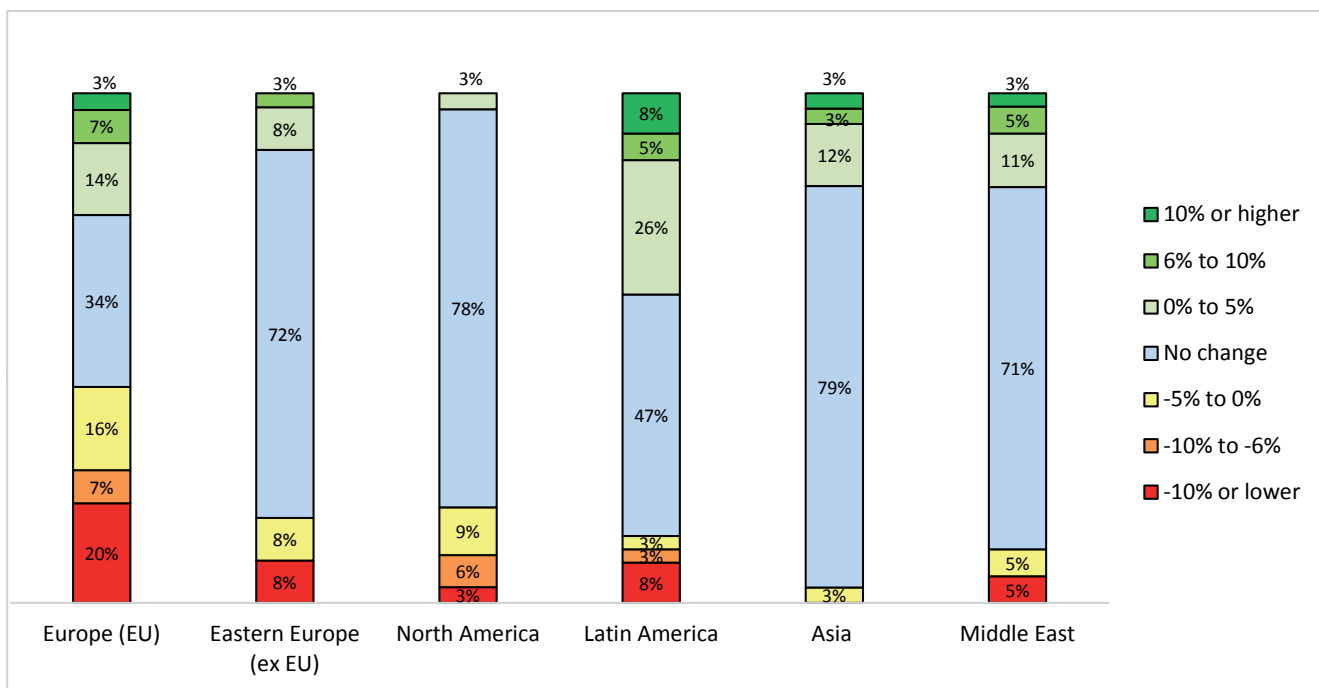
Questions specific to wealth management and institutional asset management

10c. Wealth management: change in net deposits from outside Switzerland, by geographic area

Banks with 1 to 49 employees



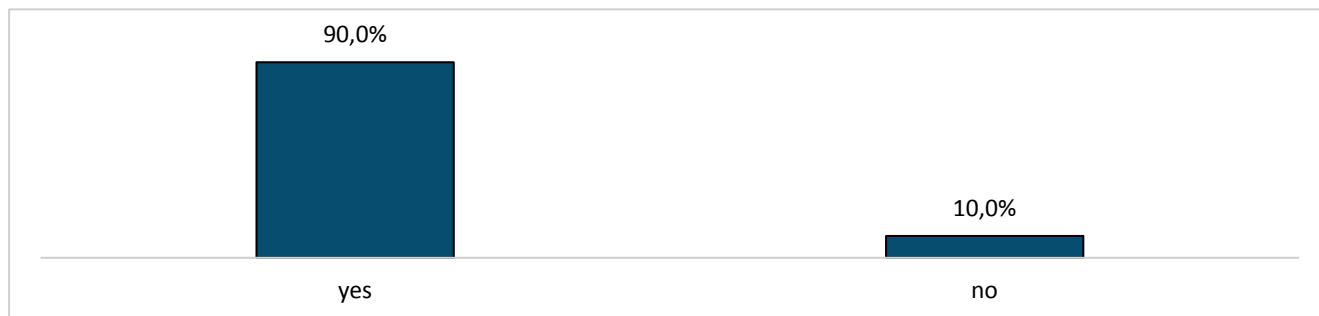
Independent asset managers (all categories)



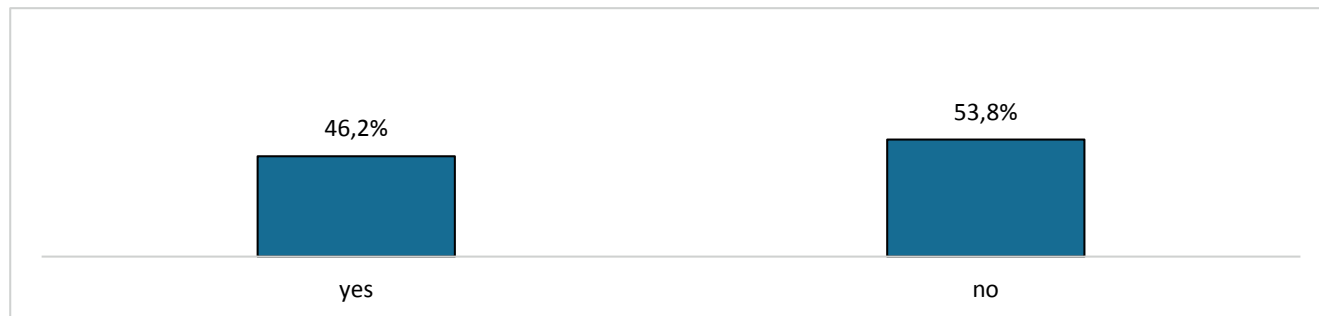
Questions specific to wealth management and institutional asset management

11. Would your business model change significantly if Switzerland did not obtain facilitated access to European markets?

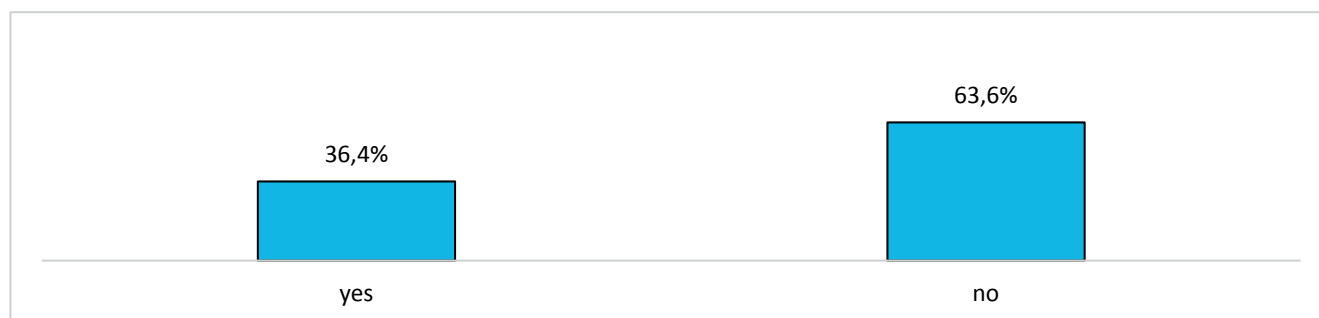
Banks with 200 or more employees



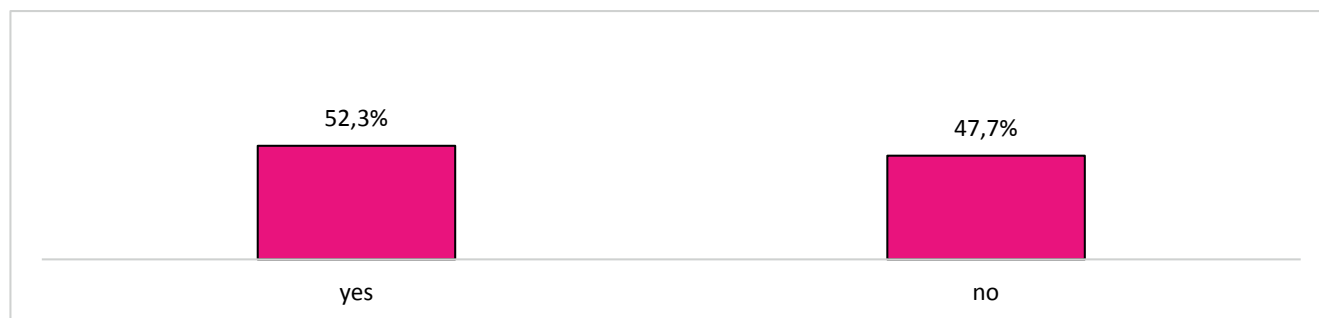
Banks with 50 to 199 employees



Banks with 1 to 49 employees



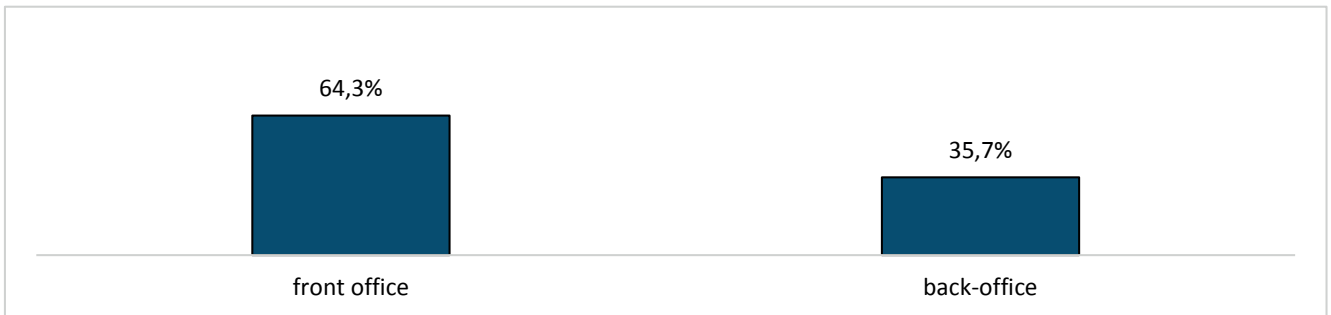
Independent asset managers (all categories)



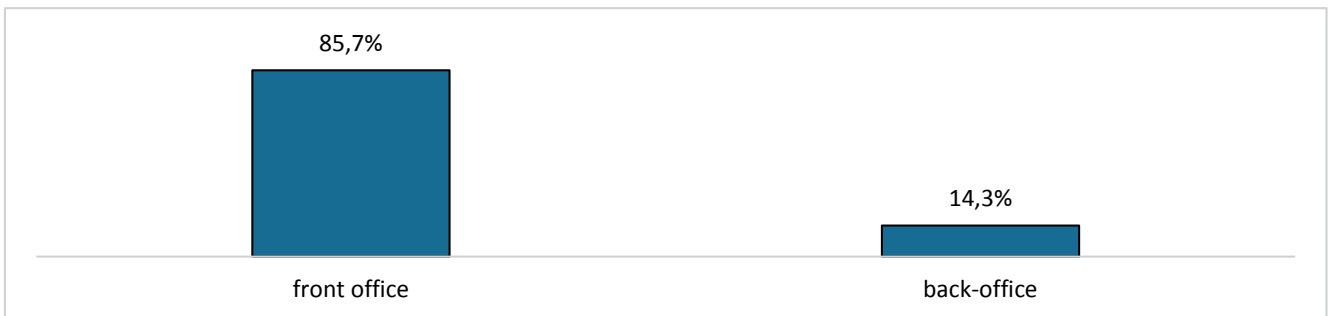
Questions specific to wealth management and institutional asset management

11a. If yes, which area of your company would this affect most?

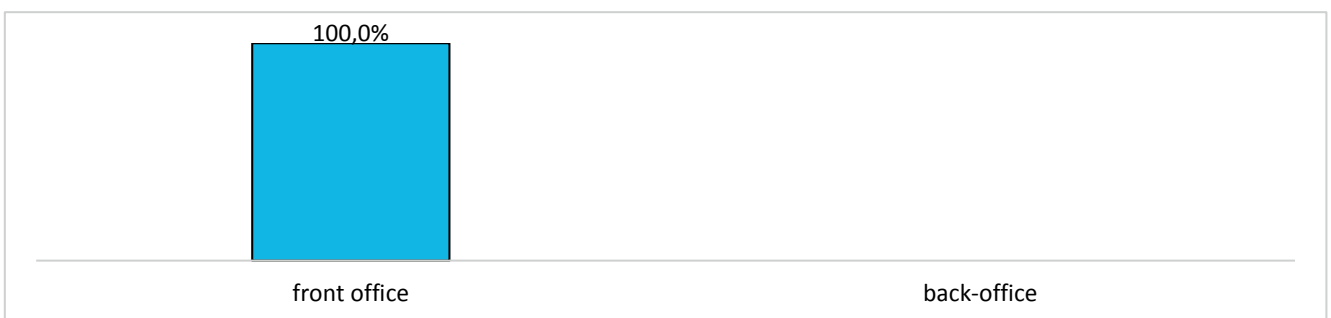
Banks with 200 or more employees



Banks with 50 to 199 employees



Banks with 1 to 49 employees



Independent asset managers (all categories)

