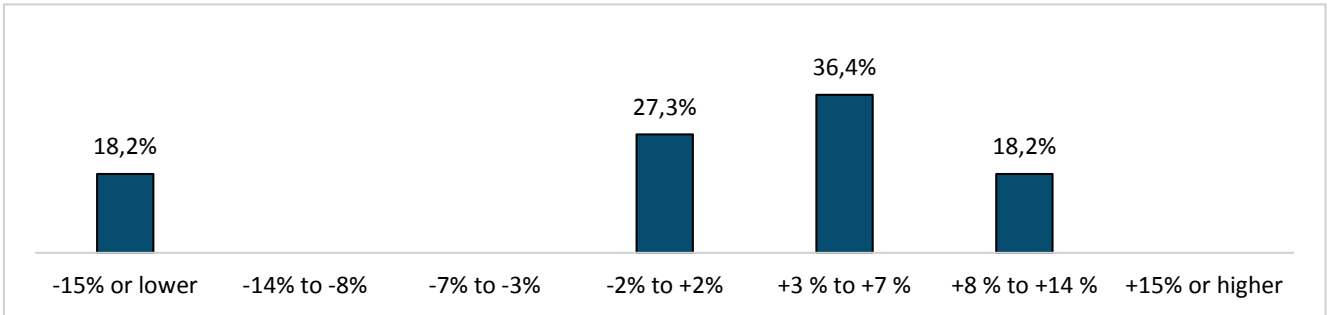


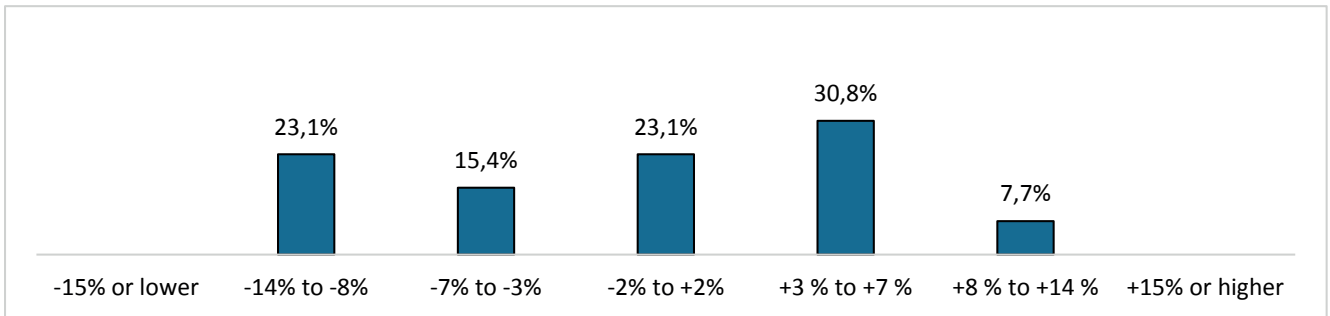
Year-on-year change, first semester 2015 vs. first semester 2014

1. Operating income (EBIT)

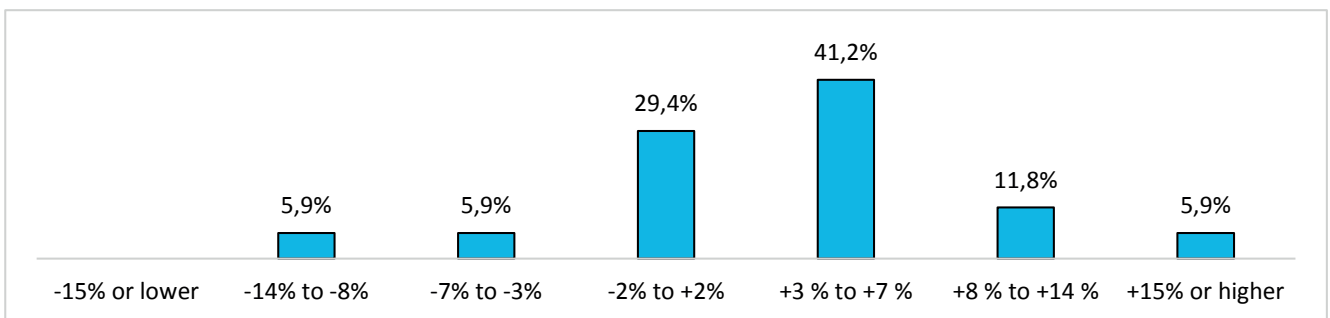
Banks with 200 or more employees



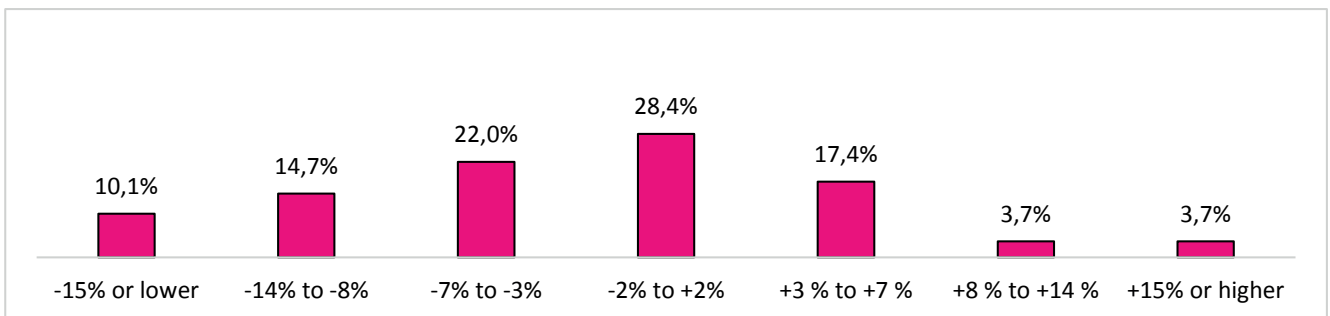
Banks with 50 to 199 employees



Banks with 1 to 49 employees



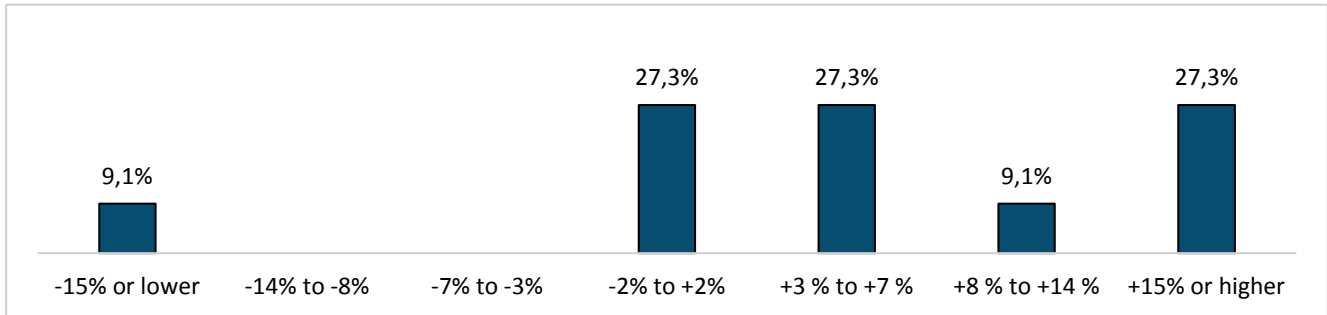
Independent asset managers (all categories)



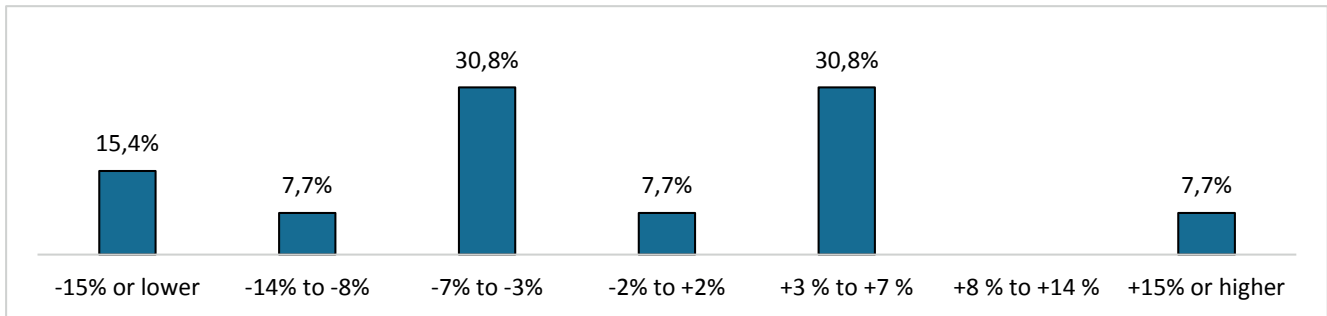
Year-on-year change, first semester 2015 vs. first semester 2014

2. Net profit

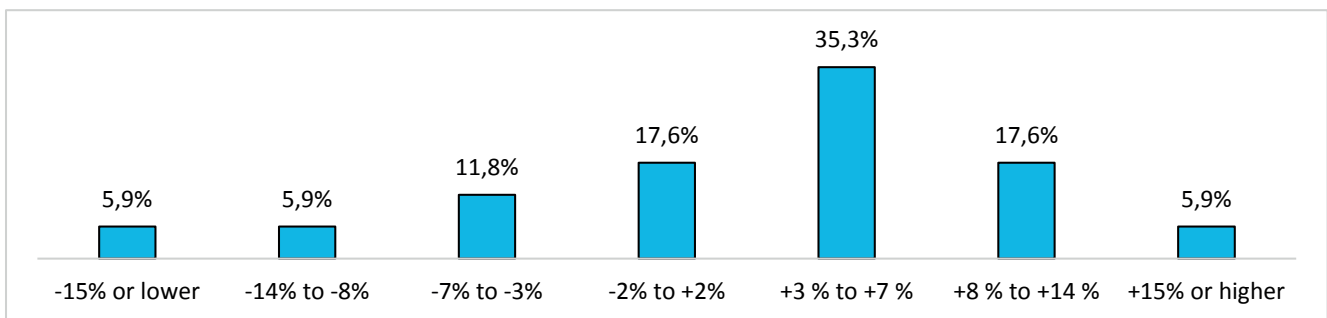
Banks with 200 or more employees



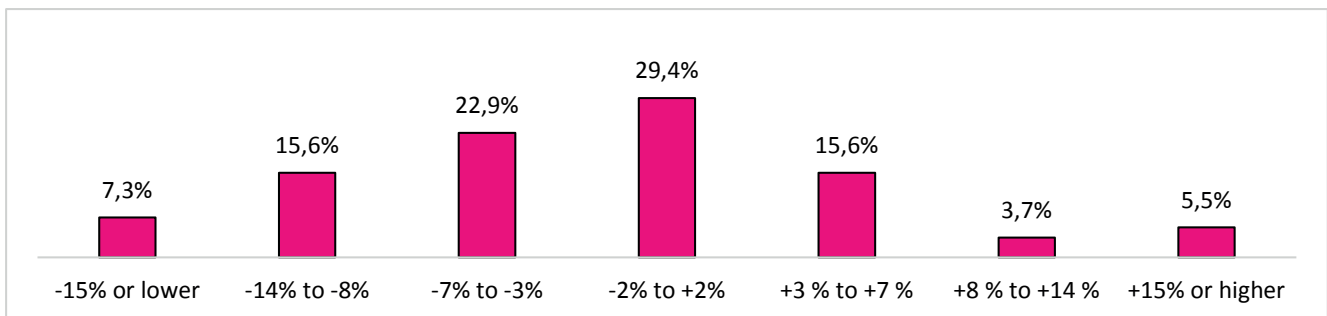
Banks with 50 to 199 employees



Banks with 1 to 49 employees



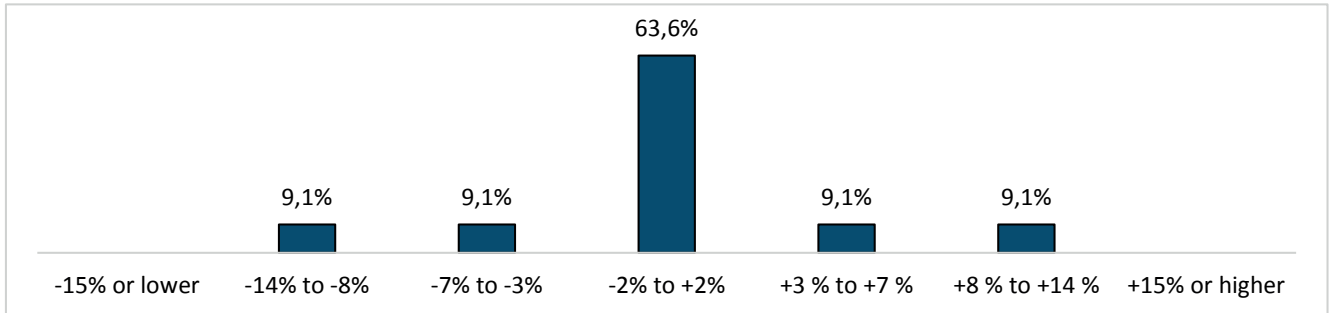
Independent asset managers (all categories)



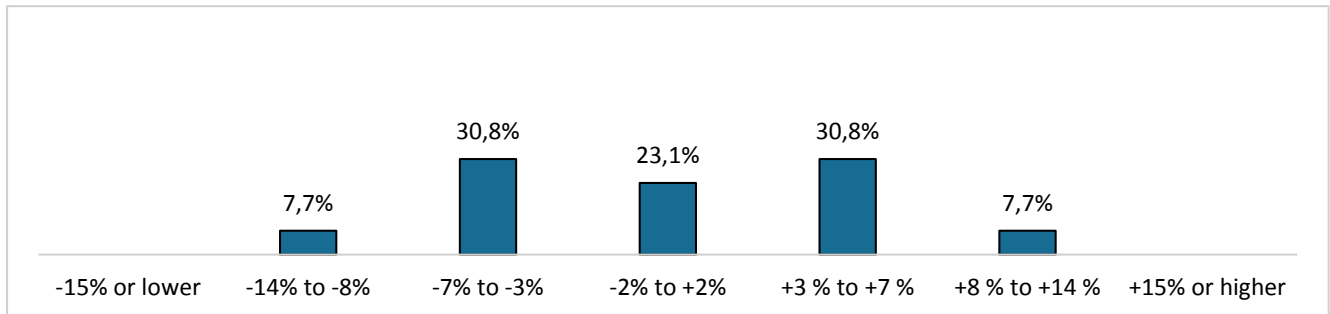
Year-on-year change, first semester 2015 vs. first semester 2014

3a. Labour costs (excluding non-wage costs)

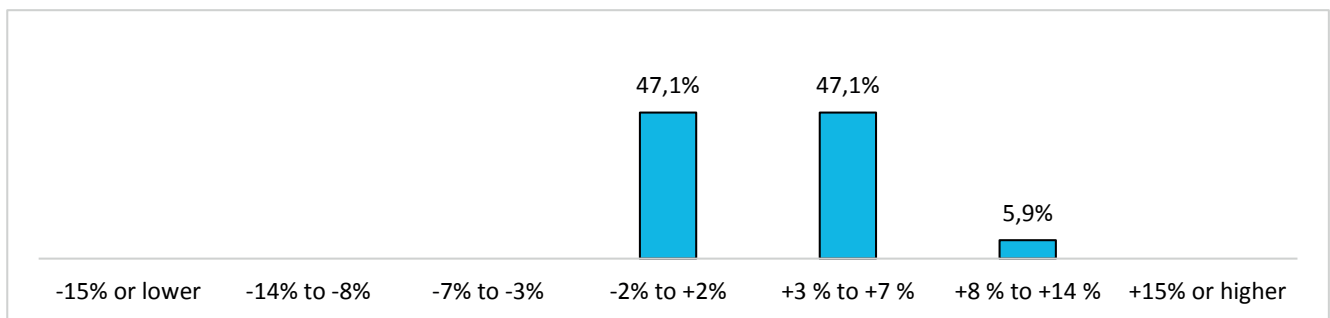
Banks with 200 or more employees



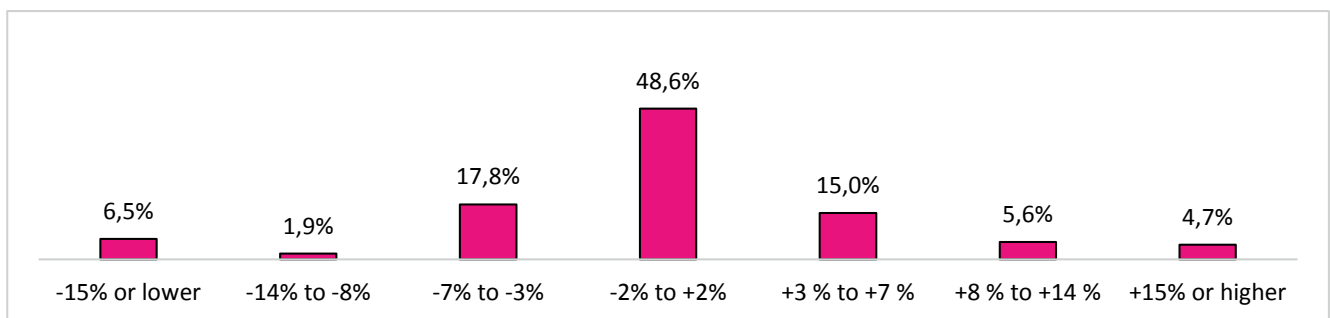
Banks with 50 to 199 employees



Banks with 1 to 49 employees



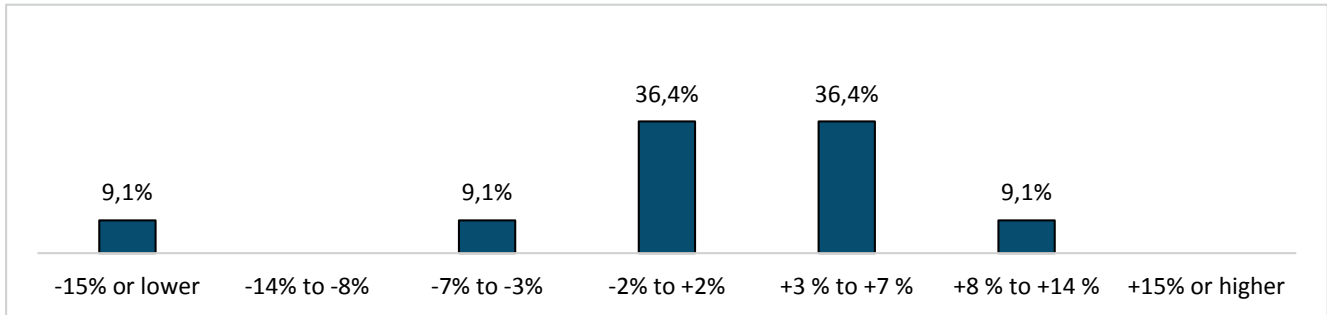
Independent asset managers (all categories)



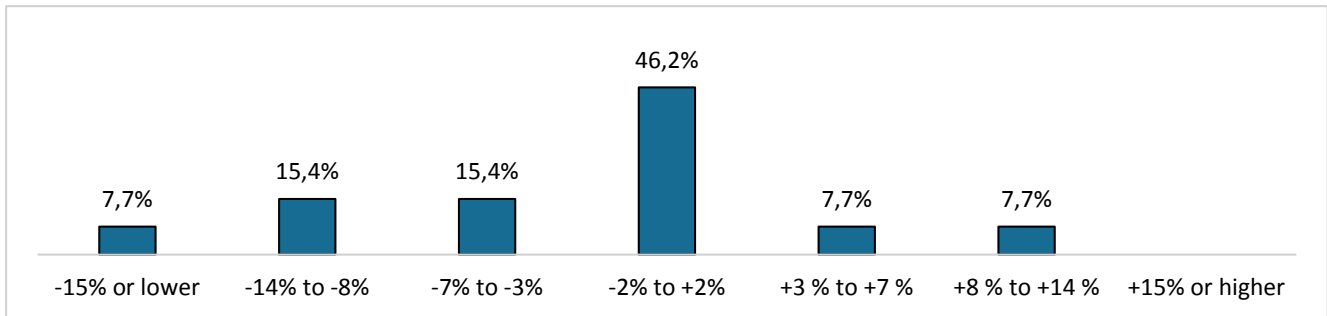
Year-on-year change, first semester 2015 vs. first semester 2014

3b. Non-wage costs

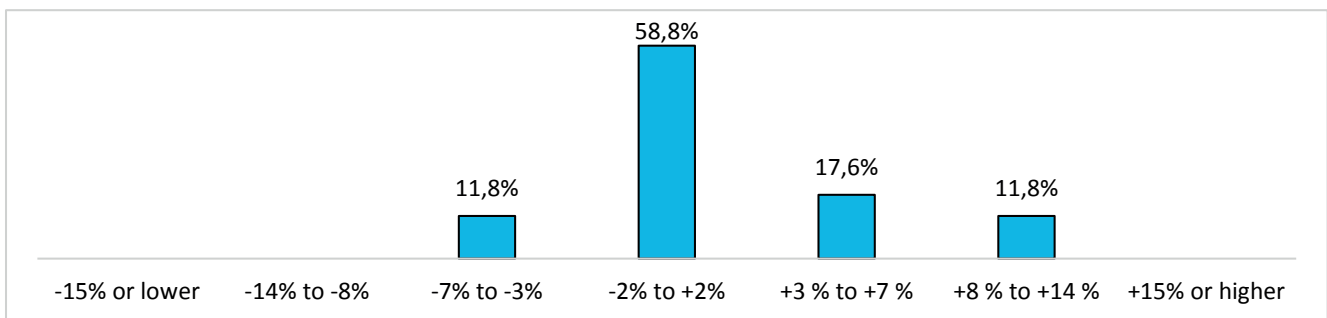
Banks with 200 or more employees



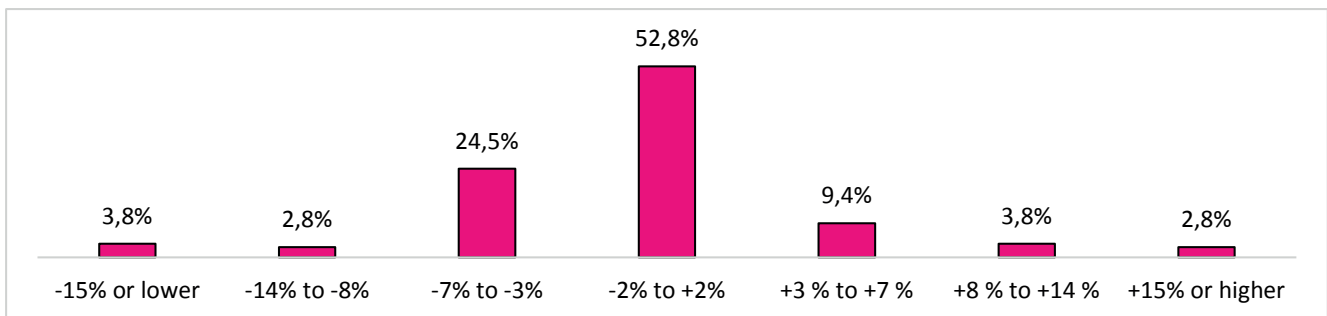
Banks with 50 to 199 employees



Banks with 1 to 49 employees



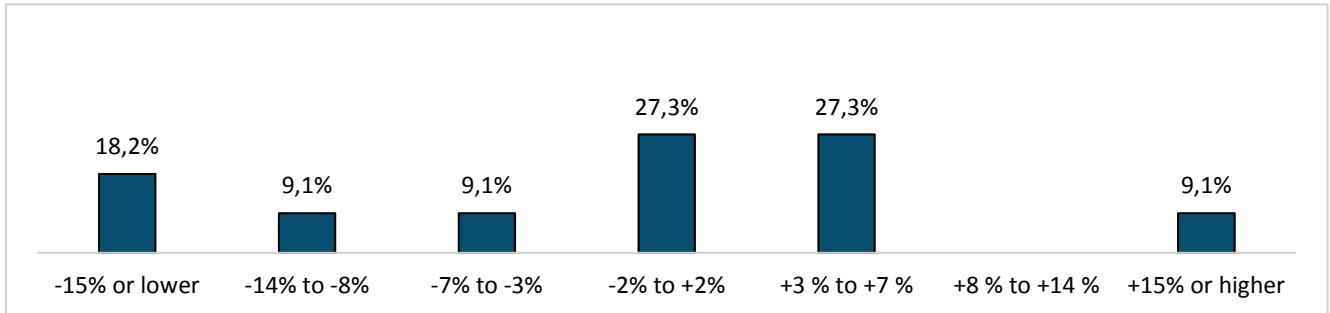
Independent asset managers (all categories)



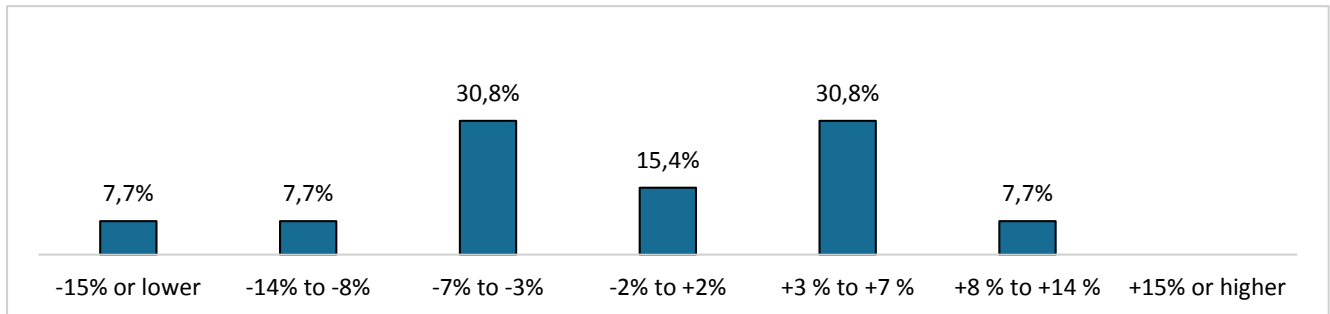
Year-on-year change, first semester 2015 vs. first semester 2014

4. General operating expenses (excluding wages)

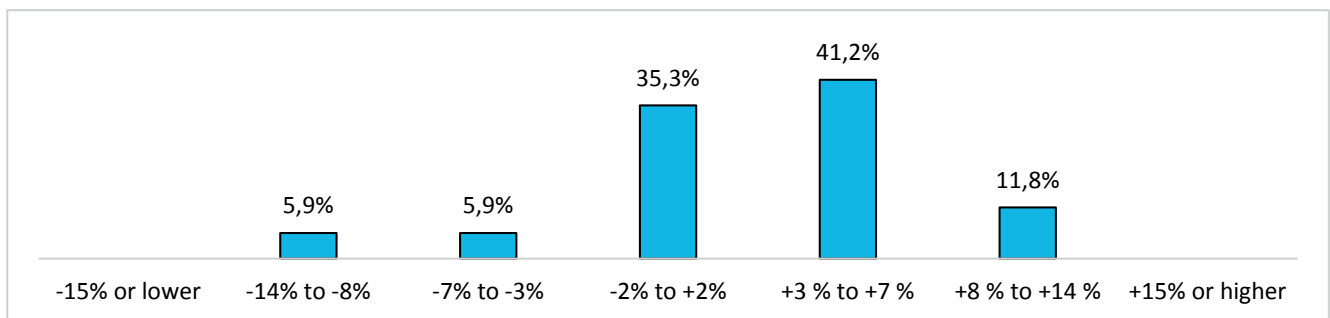
Banks with 200 or more employees



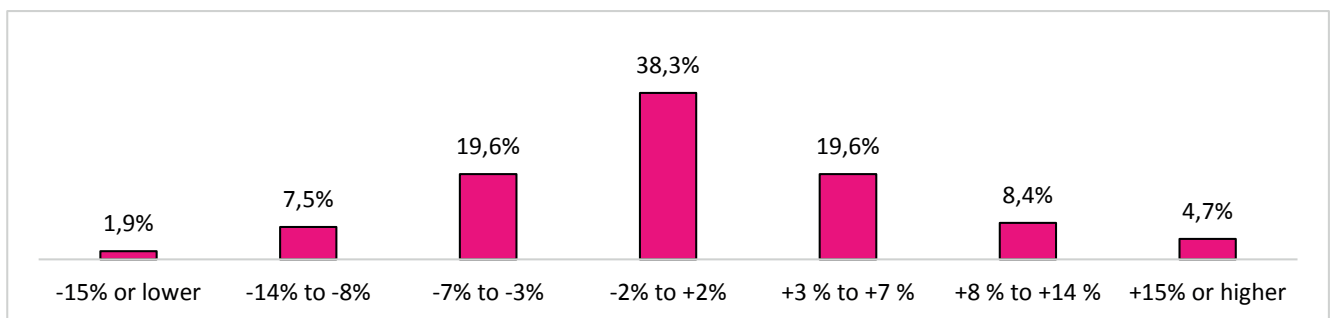
Banks with 50 to 199 employees



Banks with 1 to 49 employees



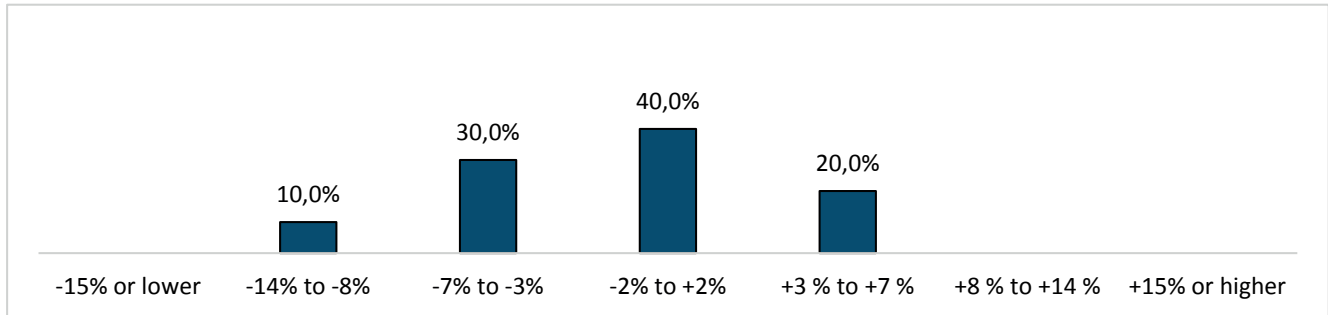
Independent asset managers (all categories)



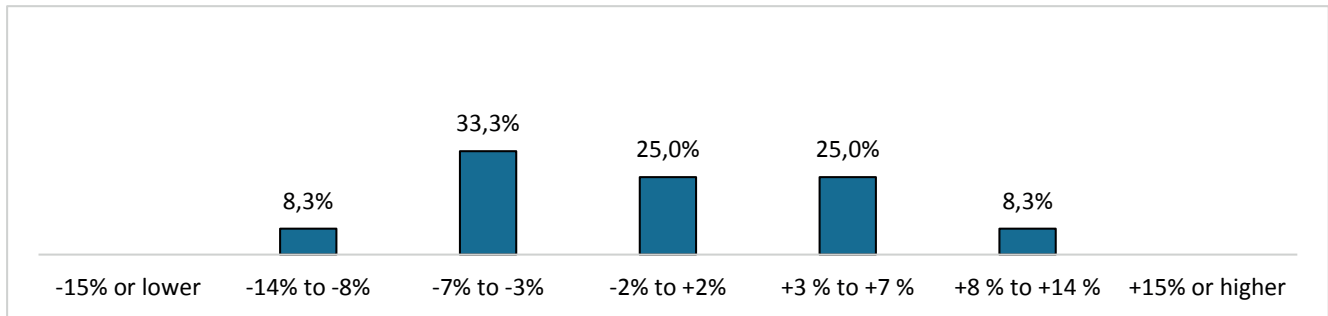
Year-on-year change, first semester 2015 vs. first semester 2014

5. Number of employees

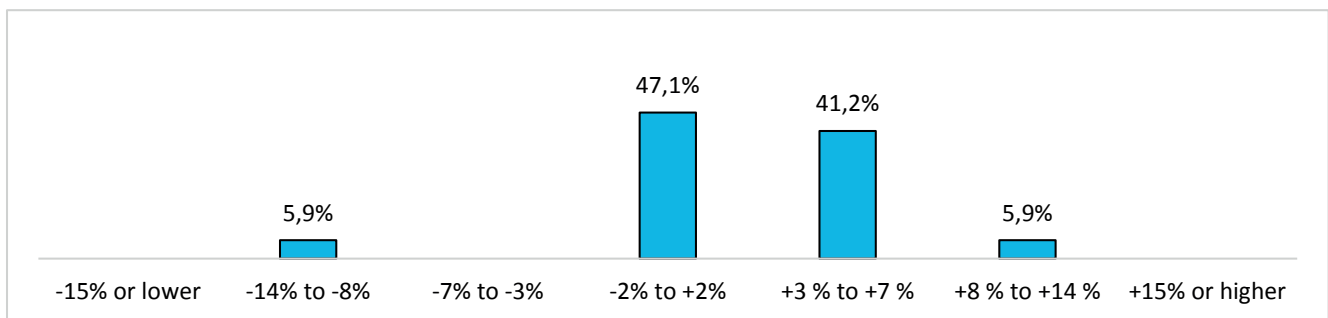
Banks with 200 or more employees



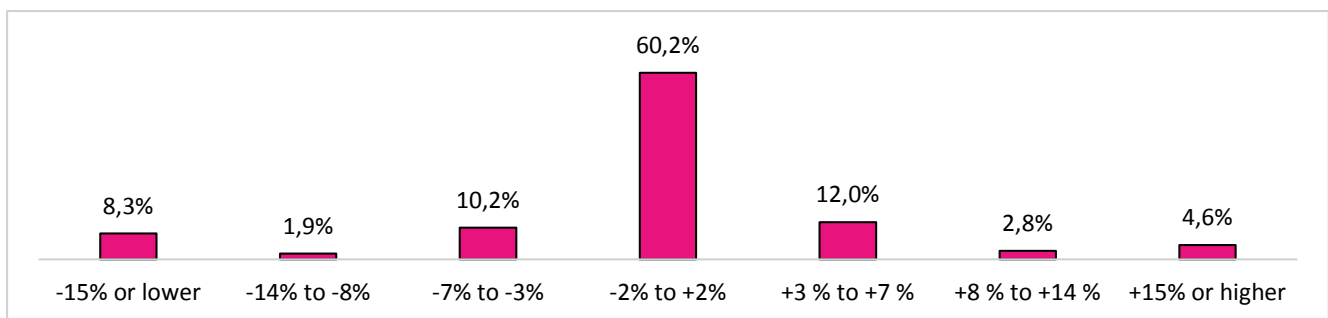
Banks with 50 to 199 employees



Banks with 1 to 49 employees



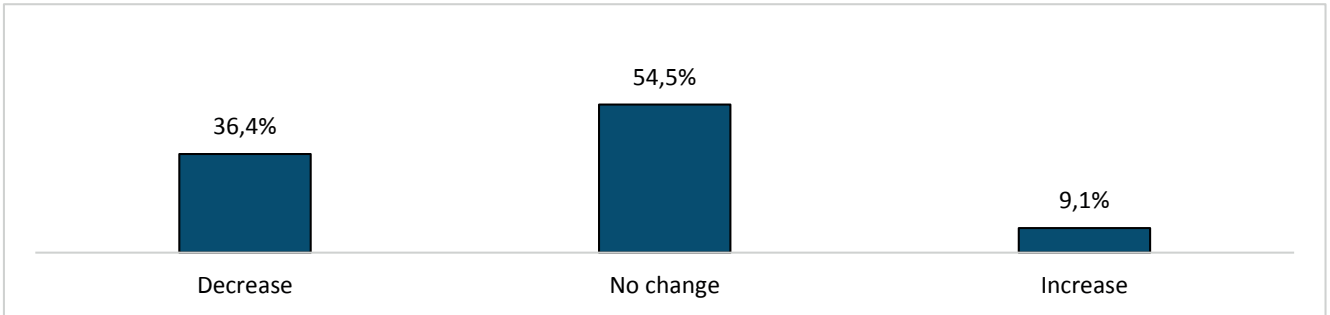
Independent asset managers (all categories)



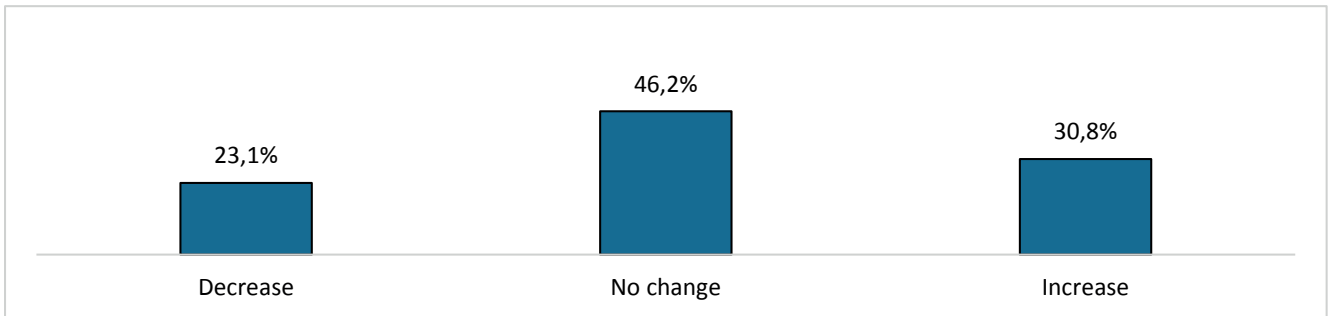
Year-on-year change, first semester 2015 vs. first semester 2014

6a. Change in number of employees in Front office

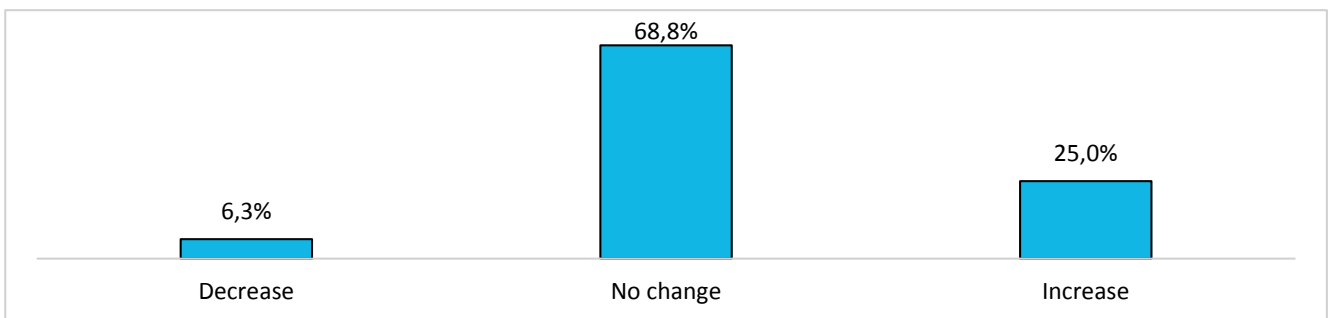
Banks with 200 or more employees



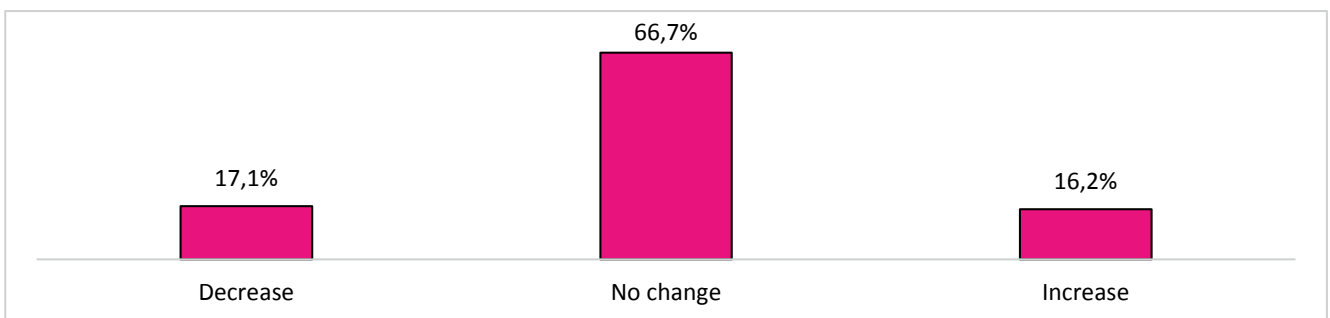
Banks with 50 to 199 employees



Banks with 1 to 49 employees



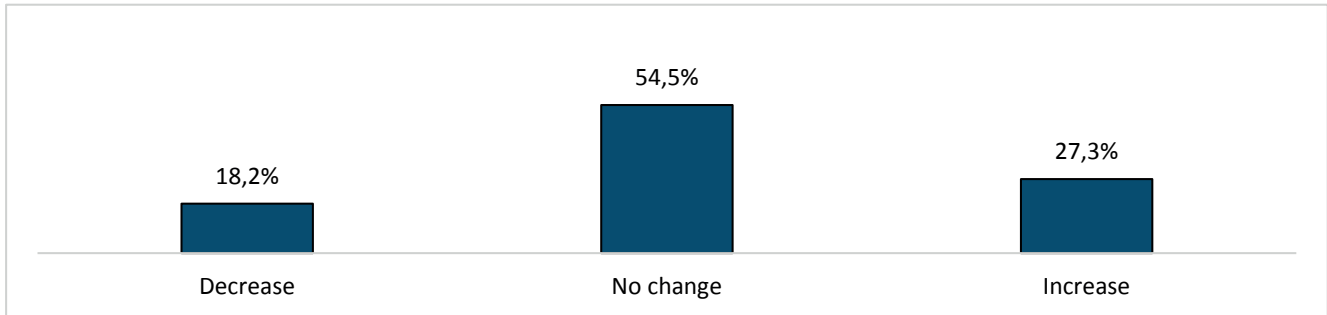
Independent asset managers (all categories)



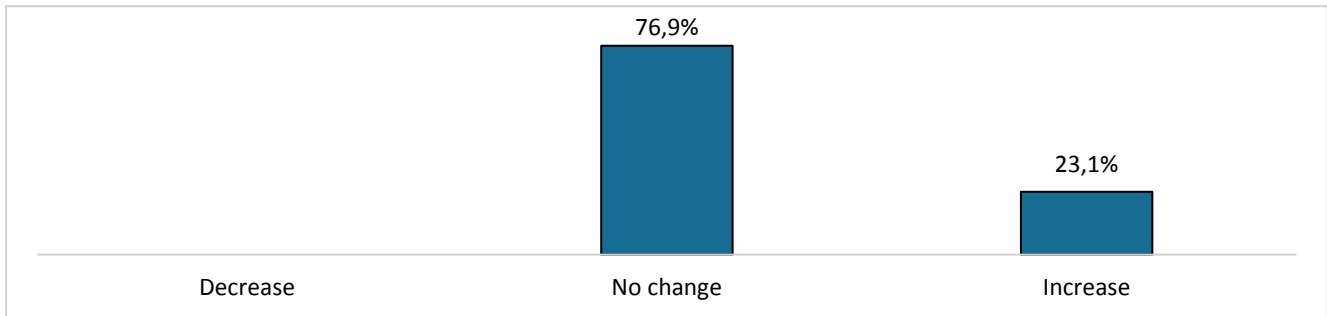
Year-on-year change, first semester 2015 vs. first semester 2014

6b. Change in number of employees in Corporate (general management, risk management, legal, etc.)

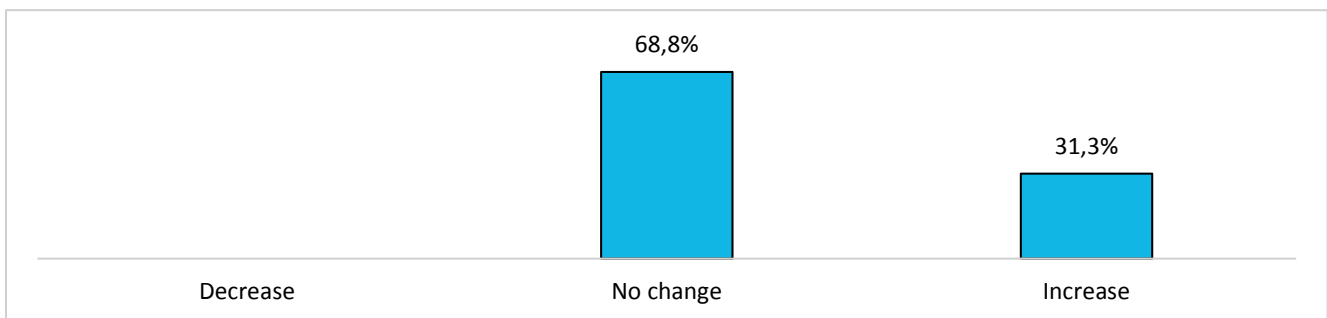
Banks with 200 or more employees



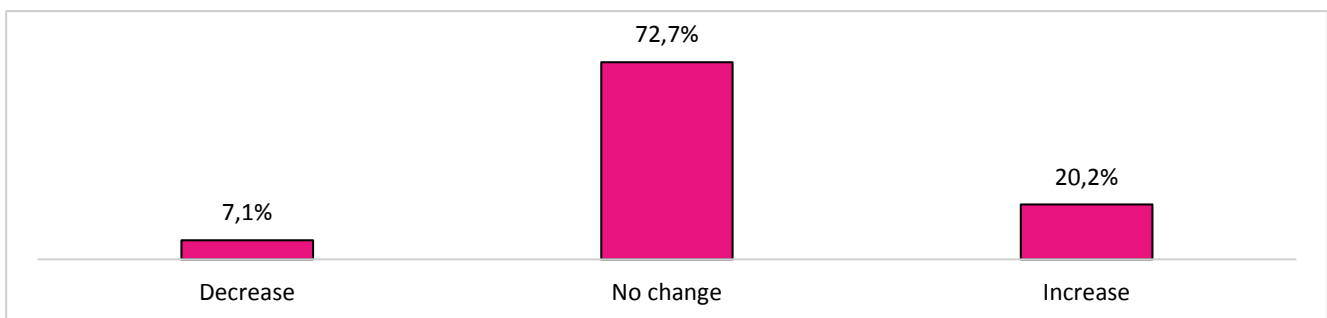
Banks with 50 to 199 employees



Banks with 1 to 49 employees



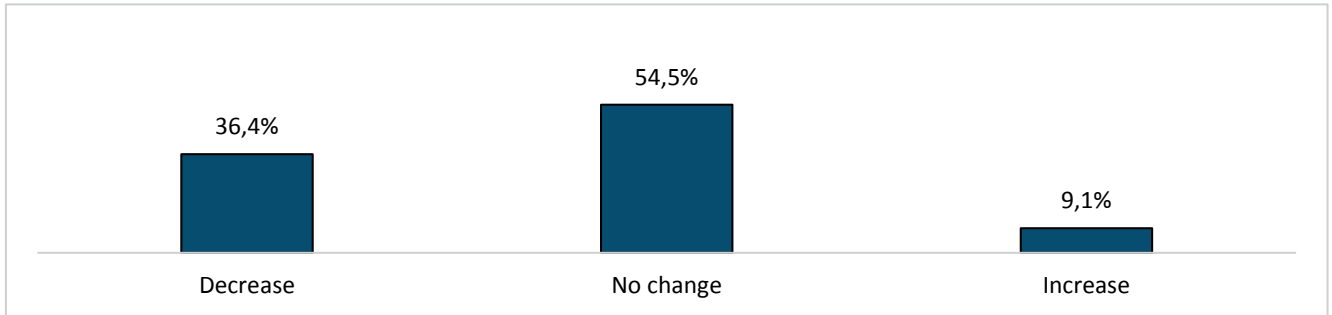
Independent asset managers (all categories)



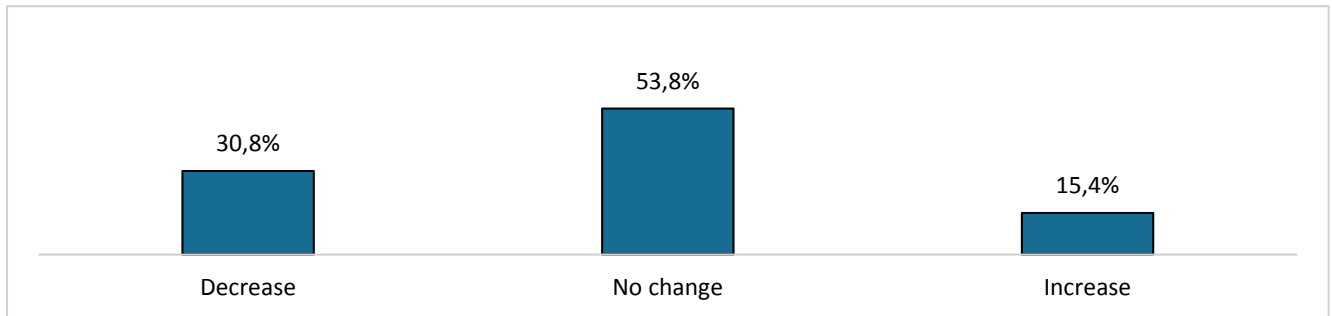
Year-on-year change, first semester 2015 vs. first semester 2014

6c. Change in number of employees in Operations (excluding information technology)

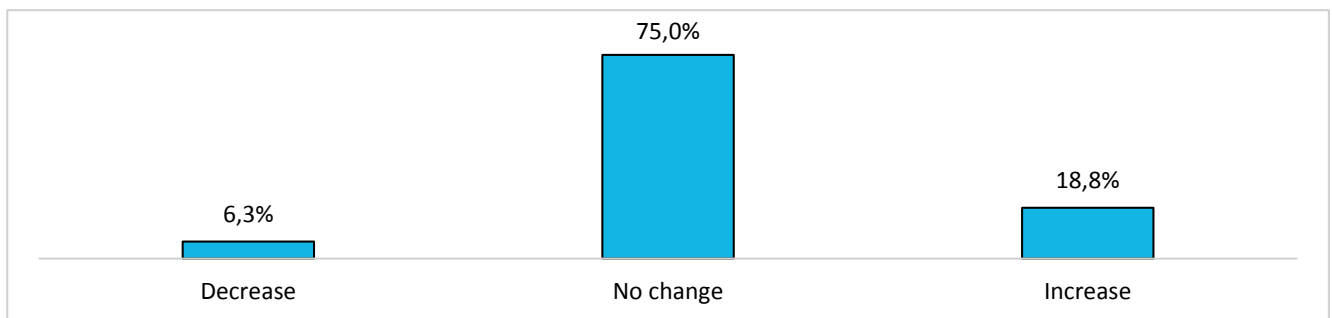
Banks with 200 or more employees



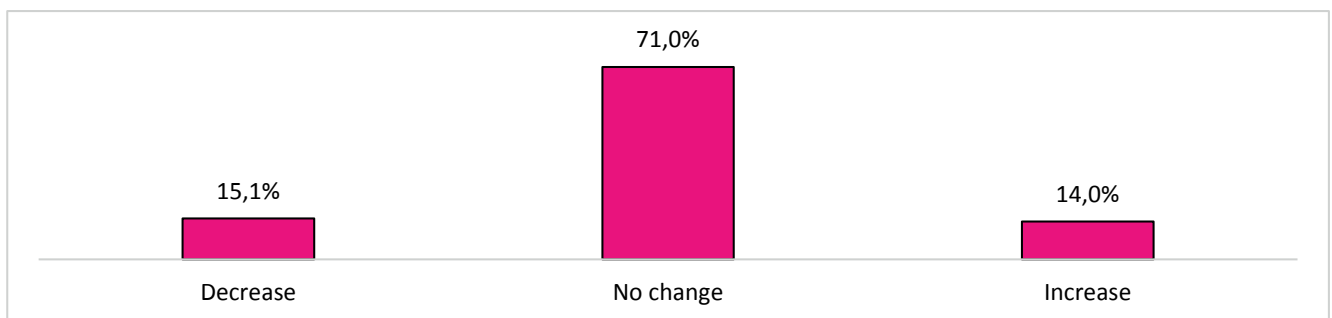
Banks with 50 to 199 employees



Banks with 1 to 49 employees



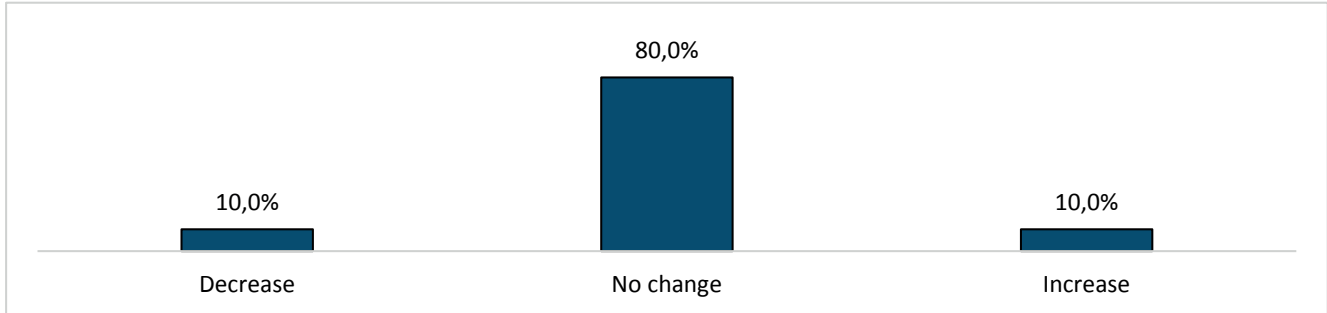
Independent asset managers (all categories)



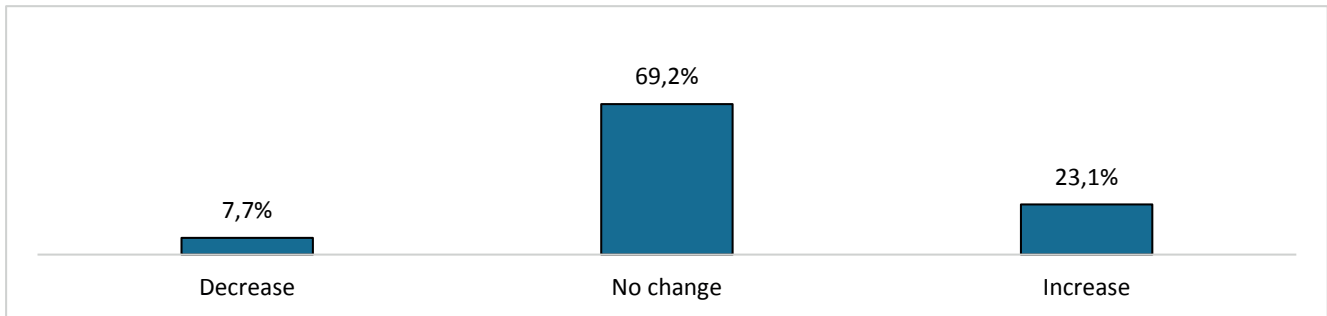
Year-on-year change, first semester 2015 vs. first semester 2014

6d. Change in number of employees in Information technology

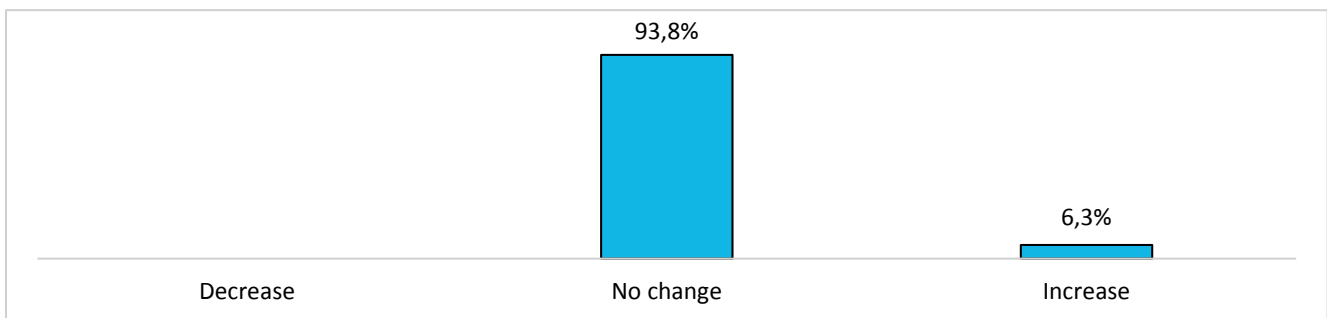
Banks with 200 or more employees



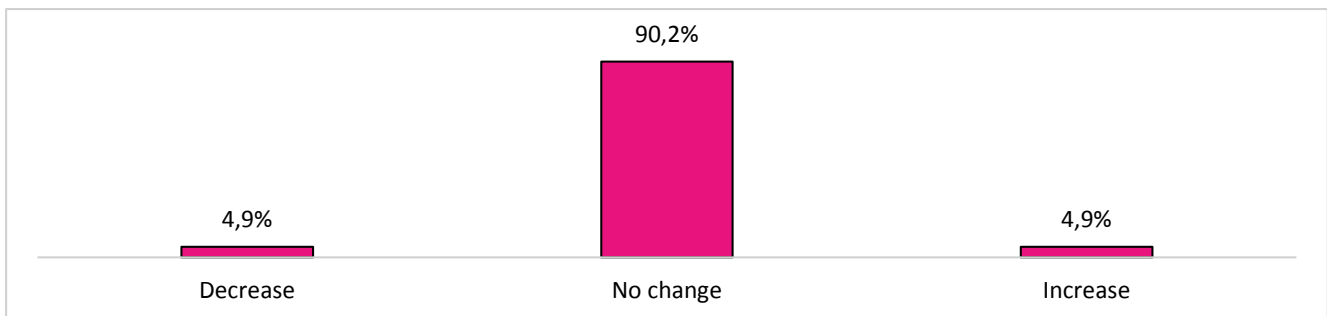
Banks with 50 to 199 employees



Banks with 1 to 49 employees



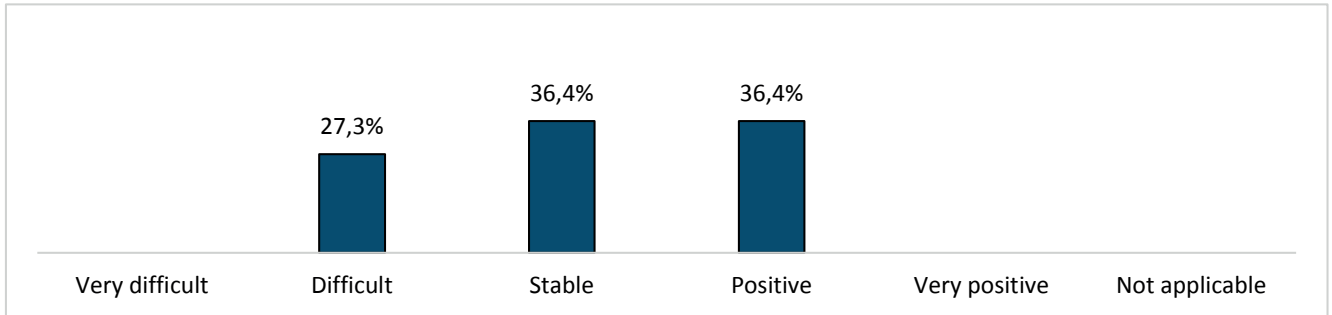
Independent asset managers (all categories)



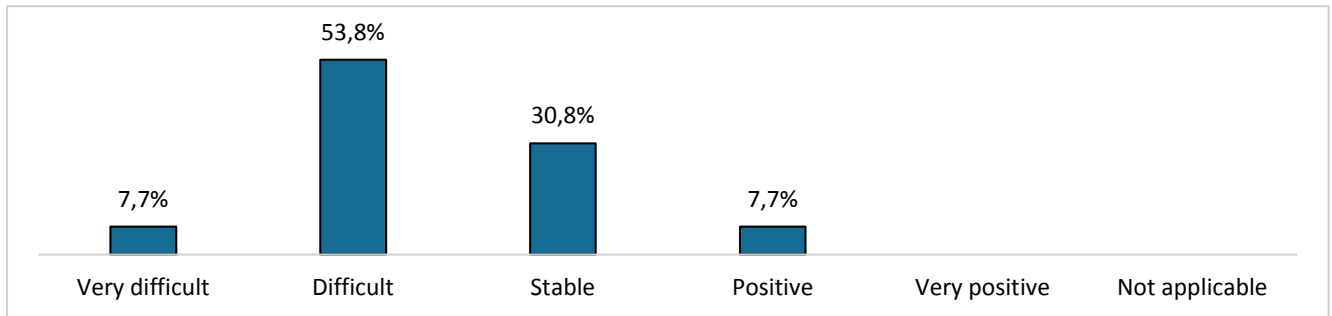
Year-on-year change, first semester 2015 vs. first semester 2014

7. In the area of wealth management, for your company, the first semester 2015 was

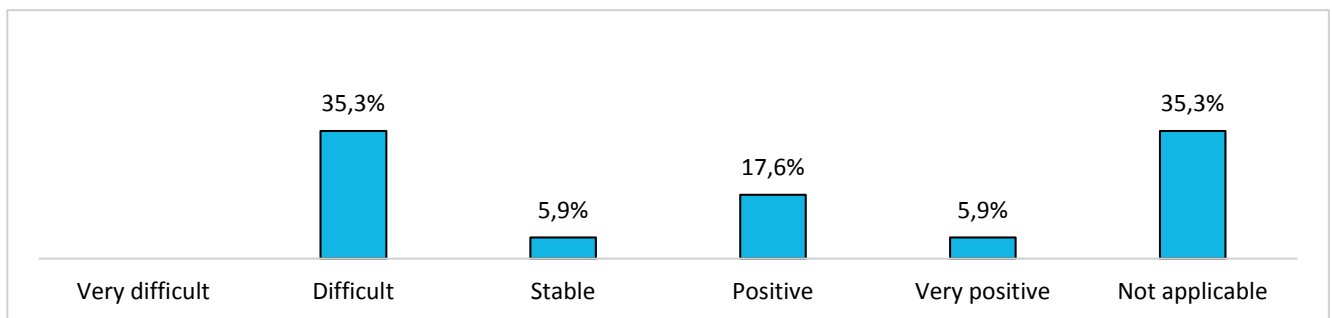
Banks with 200 or more employees



Banks with 50 to 199 employees



Banks with 1 to 49 employees



Independent asset managers (all categories)

