

FONDATION  
GENÈVE GENEVA  
PLACE FINANCIAL  
FINANCIÈRE CENTER

ECONOMIC  
SURVEY  
RESULTS  
2015-2016





## Acknowledgements

The Geneva Financial Center carried out this Economic Survey according to the methodology used in previous years. The survey is sent to directors of banks and independent asset managers in Geneva every year in June. The results presented in the following pages reflect their analyses and perceptions. The survey provides long-term data and is therefore a useful tool to measure changes in opinion among financial intermediaries regarding business performance and the outlook for the Geneva financial center.

In view of the high percentages of respondents, we consider the survey to be representative of the sector as a whole.

We would like to extend our sincere thanks to all those who agreed to take part in the survey.

We also wish to thank

- The Swiss Association of Asset Managers (SAAM),
  - The Swiss Association of Independent Financial Advisors (SAIFA), and
  - The Association Romande des Intermédiaires Financiers (ARIF),
- for their assistance in contacting their respective members for the purpose of this survey.

Edouard Cuendet  
Director

Nicolas Pictet  
President

October 2015

## Summary

<b>Companies description</b>		<b>Page</b>
<b>A</b>	Main activities in Geneva	4
<b>B</b>	Ownership	5
<b>Year-on-year change, first semester 2015 vs. first semester 2014</b>		
<b>1</b>	Operating income (EBIT)	6
<b>2</b>	Net profit	7
<b>3a</b>	Labour costs (excluding non-wage costs)	8
<b>3b</b>	Non-wage costs	9
<b>4</b>	General operating expenses (excluding wages)	10
<b>5</b>	Number of employees	11
<b>6a</b>	Change in number of employees in Front office	12
<b>6b</b>	Change in number of employees in Corporate (general management, risk management, legal, etc.)	13
<b>6c</b>	Change in number of employees in Operations (excluding information technology)	14
<b>6d</b>	Change in number of employees in Information technology	15
<b>7</b>	In the area of wealth management, for your company, the first semester 2015 was	16
<b>Questions specific to wealth management and institutional asset management</b>		
<b>8</b>	Change in assets under management in CHF, 31.12.2014 to 30.6.2015	17
<b>9</b>	Main cause of change	18
<b>10a</b>	Wealth management: overall change in net deposits, 31.12.2014 to 30.6.2015	19
<b>10b</b>	This change in assets was due primarily to clients residing	20
<b>10c</b>	Wealth management: change in net deposits from outside Switzerland, by geographic area	21
<b>11</b>	Would your business model change significantly if Switzerland did not obtain facilitated access to European markets?	23
<b>11a</b>	If yes, which area of your company would this affect most?	24
<b>Outlook for 2015 full year vs. 2014</b>		
<b>12</b>	Expected change in operating income (EBIT)	25
<b>13</b>	Expected change in net profit	26
<b>14a</b>	Expected change in labour costs (excluding non-wage costs)	27
<b>14b</b>	Expected change in non-wage costs	28
<b>15</b>	Expected change in general expenses (excluding wages)	29
<b>16</b>	Expected change in number of employees	30
<b>17</b>	For your company, 2015 overall is likely to be	31

## Outlook for 2016

18	For your company, the year 2016 is likely to be	32
19	Expected change in net profit, 2016 vs. 2015	33
20	In 2016, you expect the number of employees in Geneva to	34

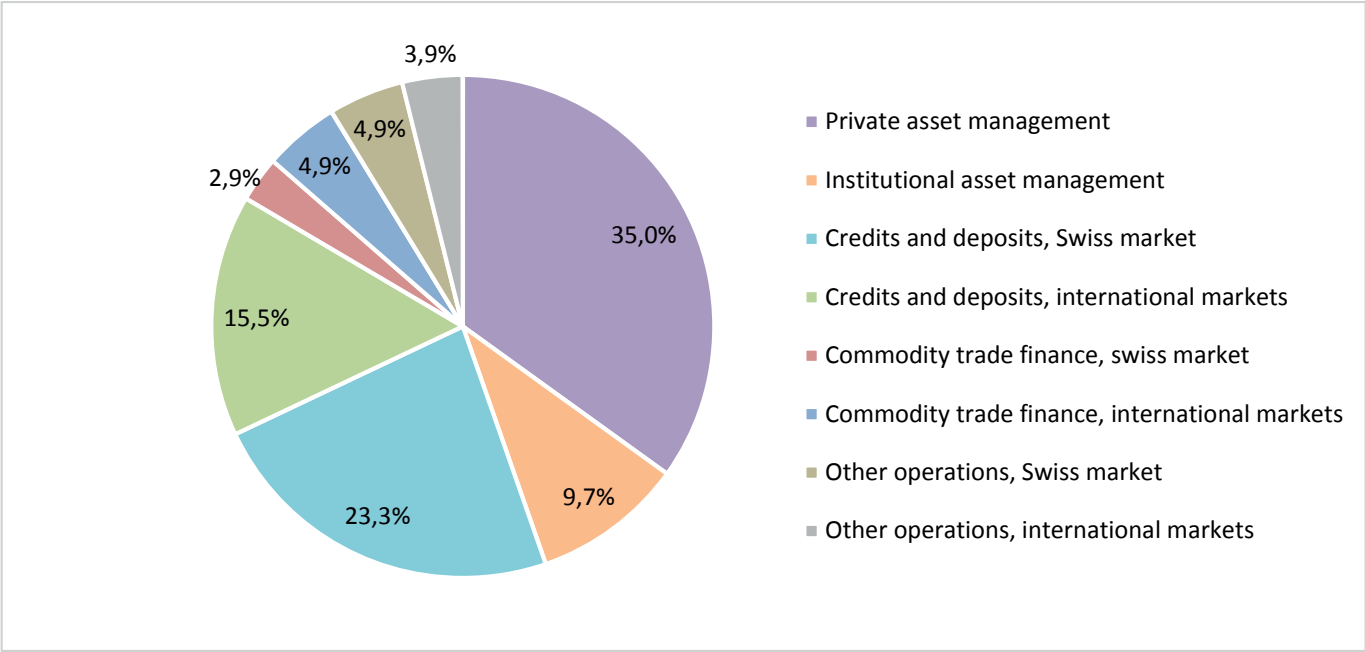
## Framework conditions

21	In 2014, the attractiveness of the Geneva financial center for your clients	35
22	In 2014, the attractiveness of the Geneva financial center for the activities	36
23	If you relocated activities away from Geneva, which of the following financial centers would you consider moving to?	37
24	What impact do you expect the new standard for automatic exchange of information to have on your company?	38
25	What practical consequences would automatic exchange of information have on your company?	39
26	In your opinion, which of the following areas for action should the Geneva Financial Center prioritize?	40
27	Areas to prioritize at the Geneva cantonal level	41
28	Areas to prioritize at the national level	42
29	Which others areas for action should the Geneva Financial Center also prioritize?	43

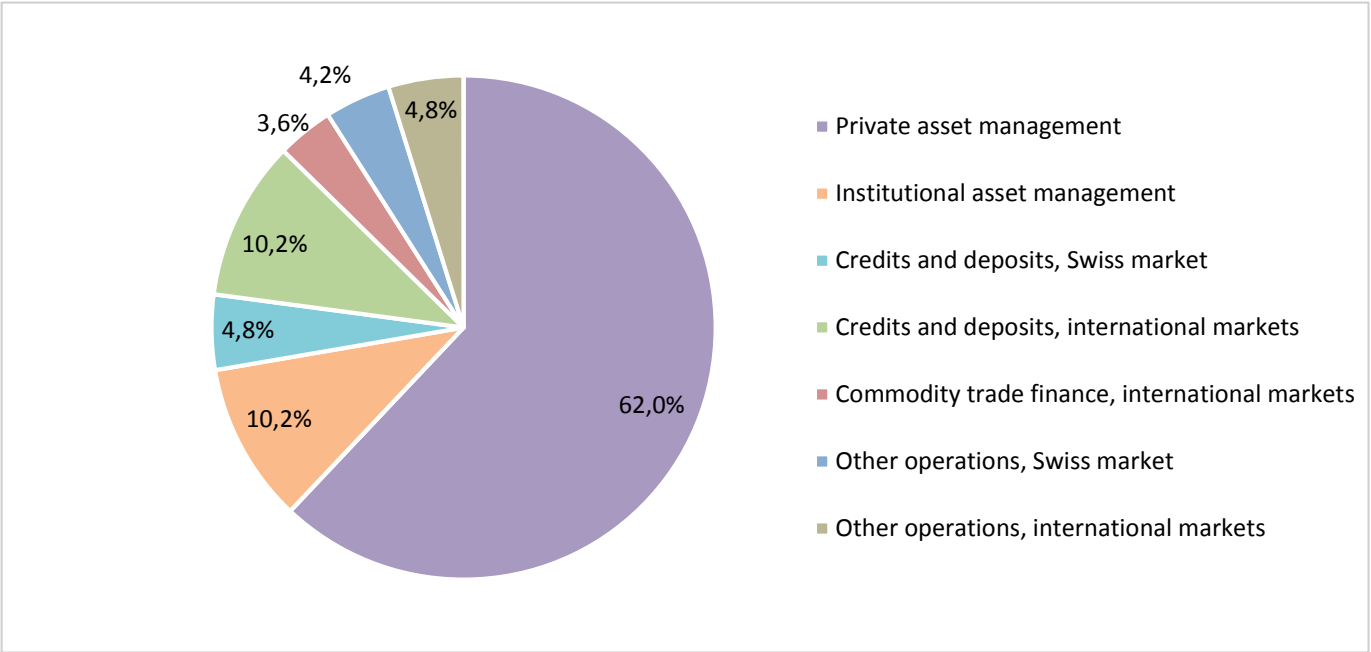
# Companies description

## A. Main activities in Geneva (more than one answer possible)

Banks



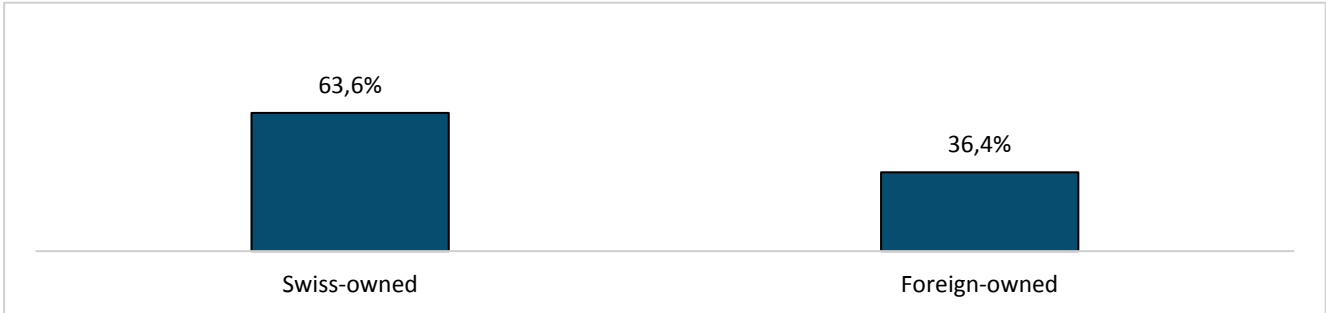
Independent asset managers (all categories)



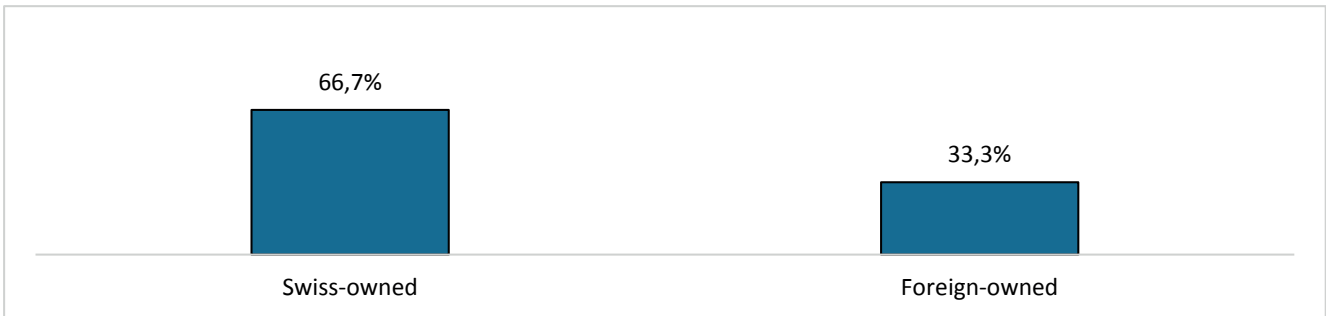
# Companies description

## B. Ownership

Banks with 200 or more employees



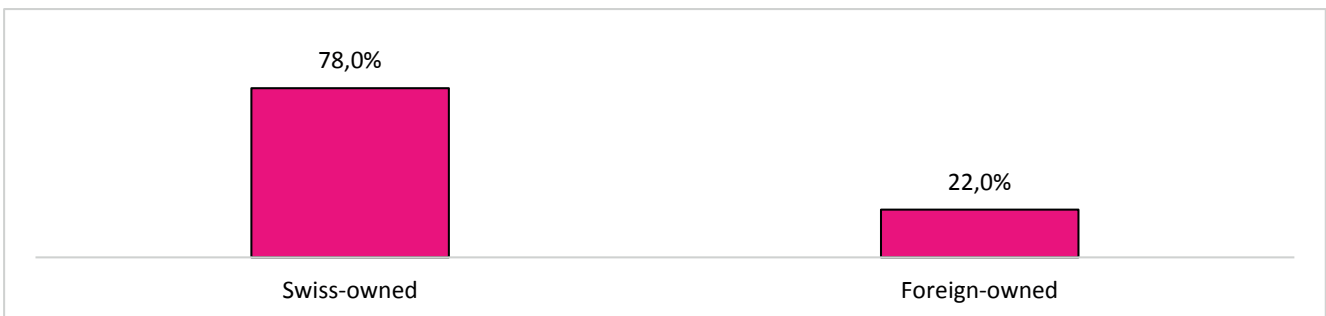
Banks with 50 to 199 employees



Banks with 1 to 49 employees



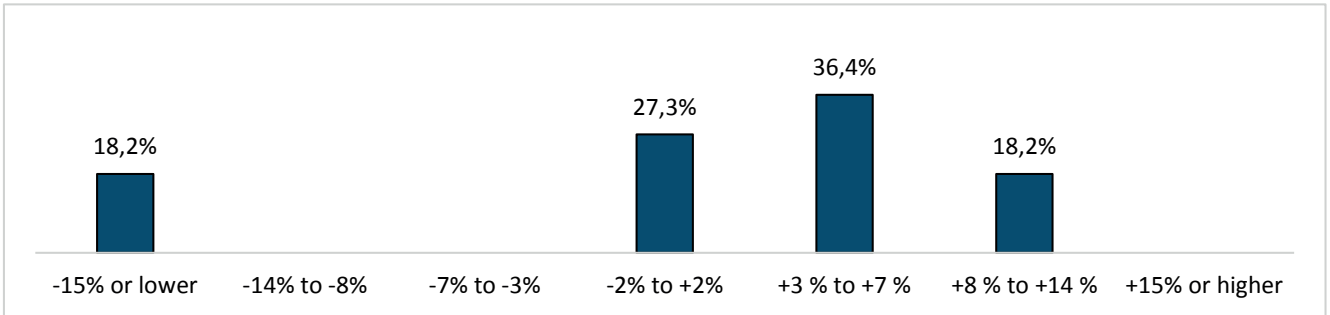
Independent asset managers (all categories)



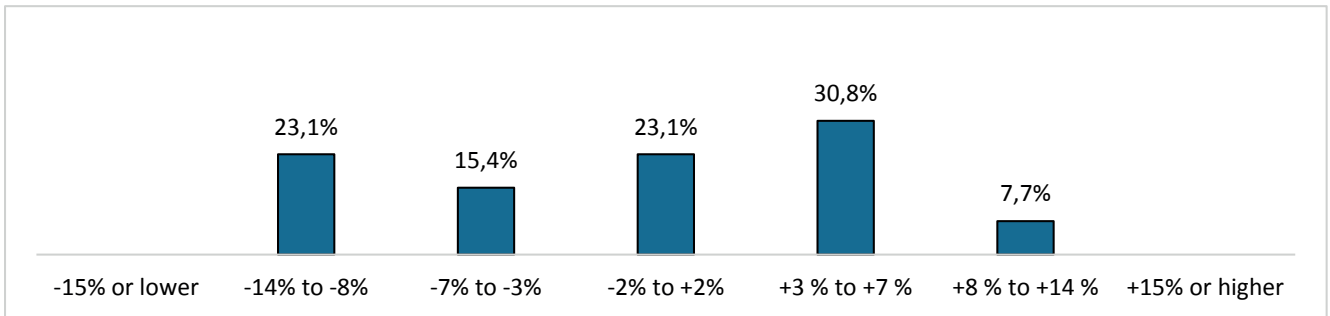
# Year-on-year change, first semester 2015 vs. first semester 2014

## 1. Operating income (EBIT)

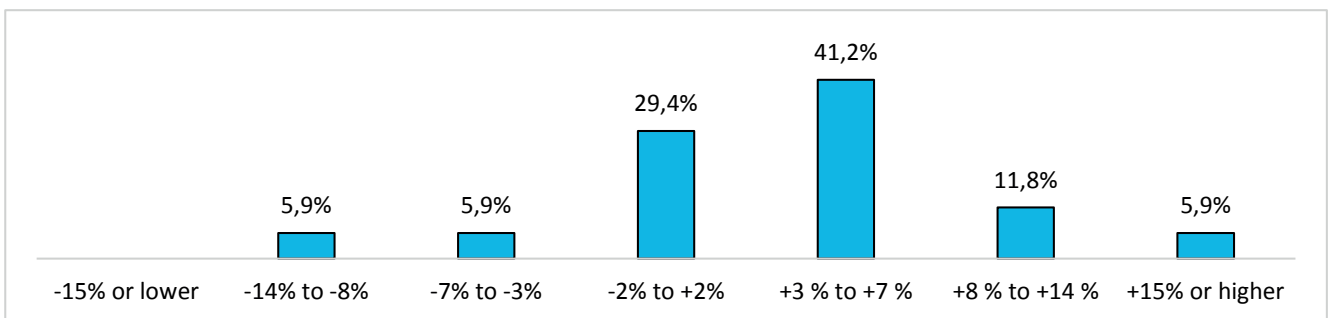
Banks with 200 or more employees



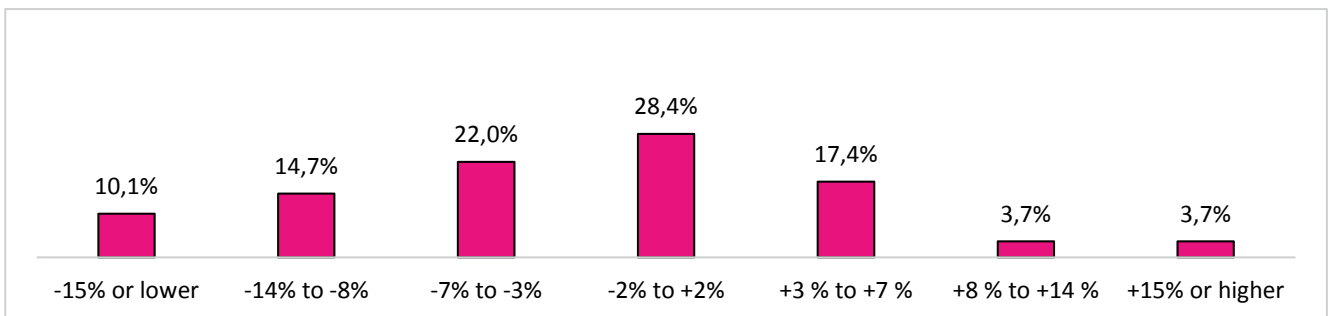
Banks with 50 to 199 employees



Banks with 1 to 49 employees



Independent asset managers (all categories)

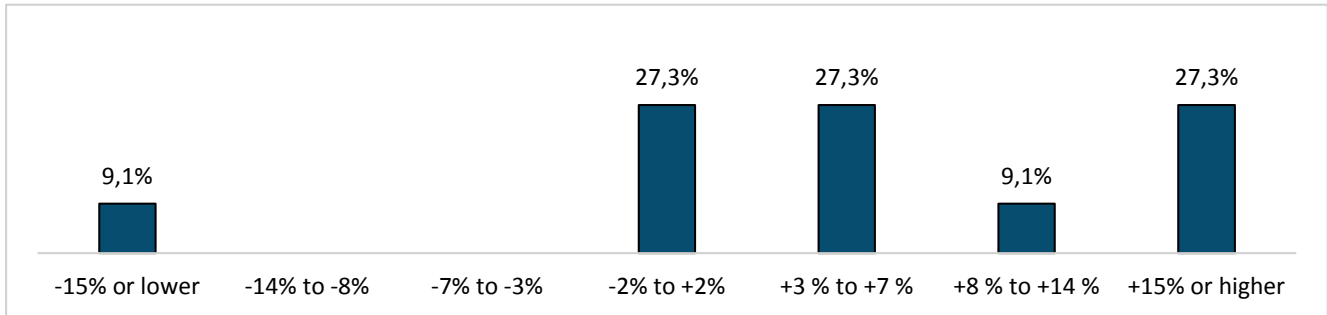




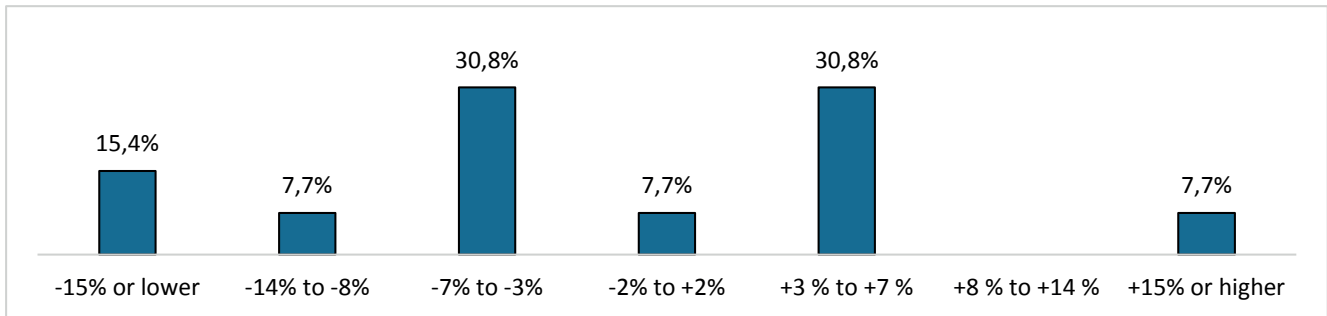
## Year-on-year change, first semester 2015 vs. first semester 2014

### 2. Net profit

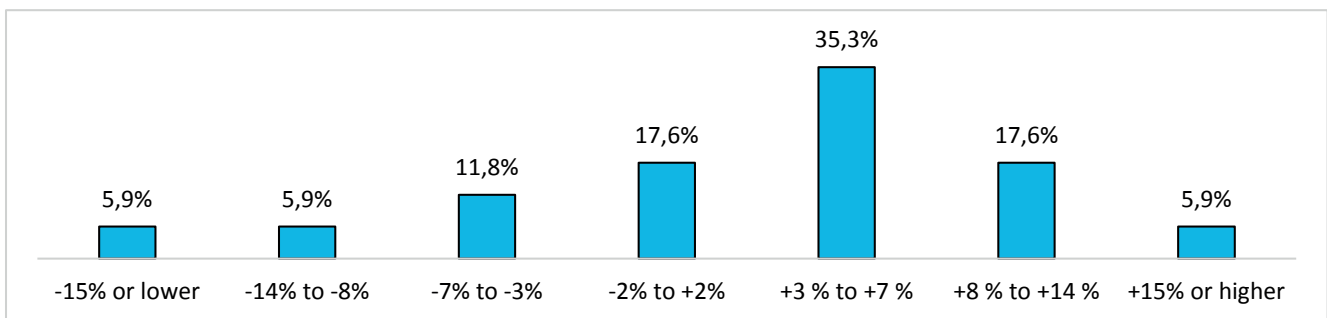
Banks with 200 or more employees



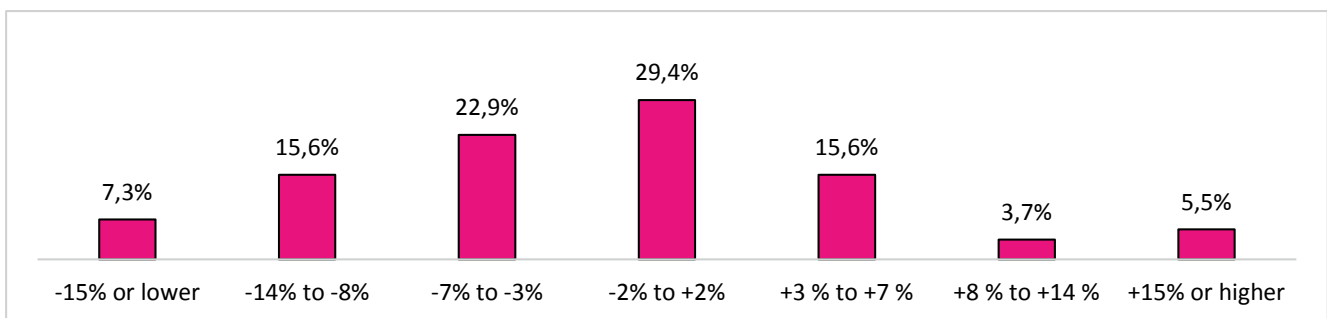
Banks with 50 to 199 employees



Banks with 1 to 49 employees



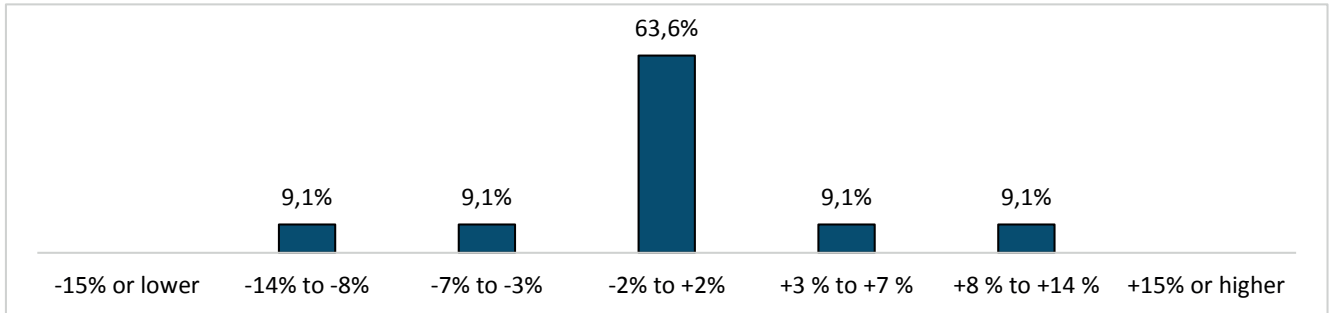
Independent asset managers (all categories)



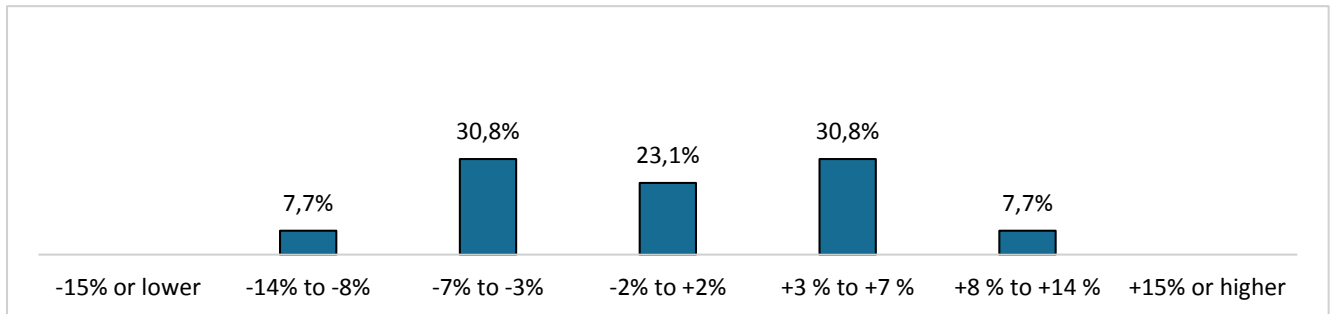
## Year-on-year change, first semester 2015 vs. first semester 2014

### 3a. Labour costs (excluding non-wage costs)

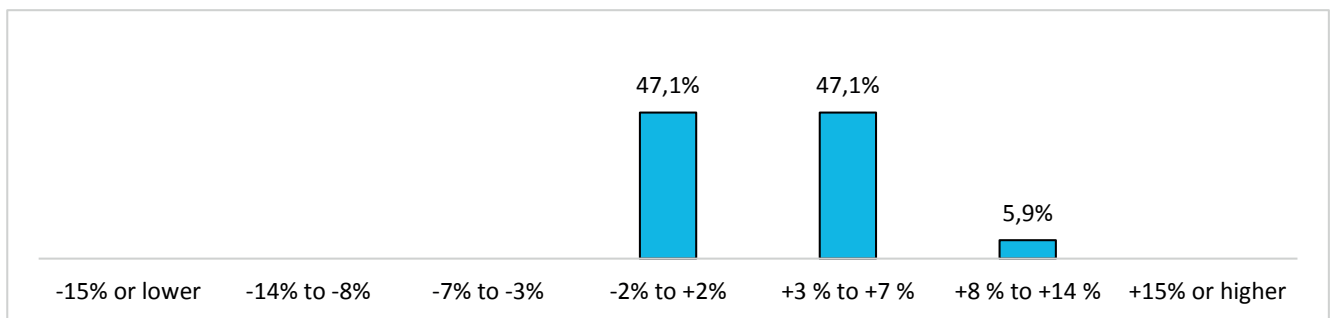
Banks with 200 or more employees



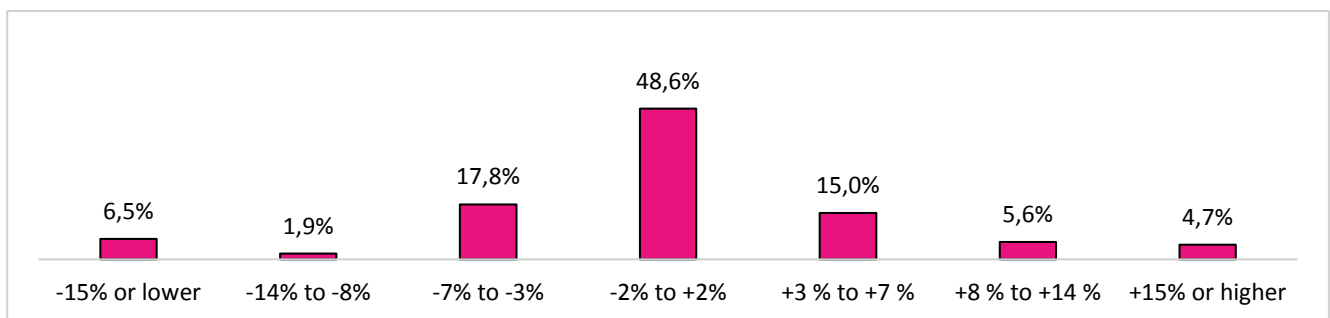
Banks with 50 to 199 employees



Banks with 1 to 49 employees



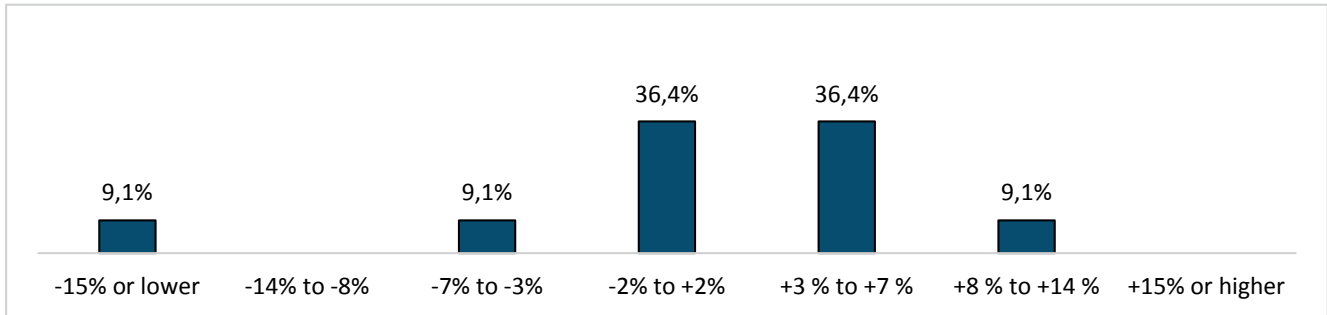
Independent asset managers (all categories)



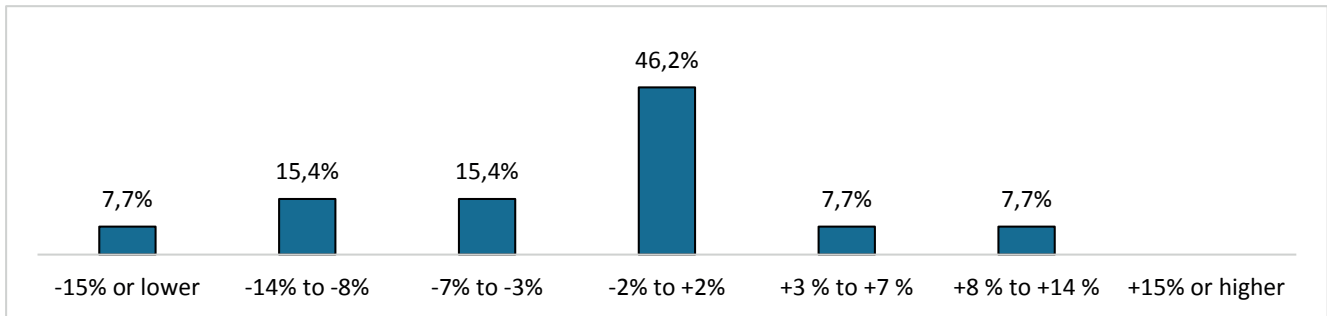
## Year-on-year change, first semester 2015 vs. first semester 2014

### 3b. Non-wage costs

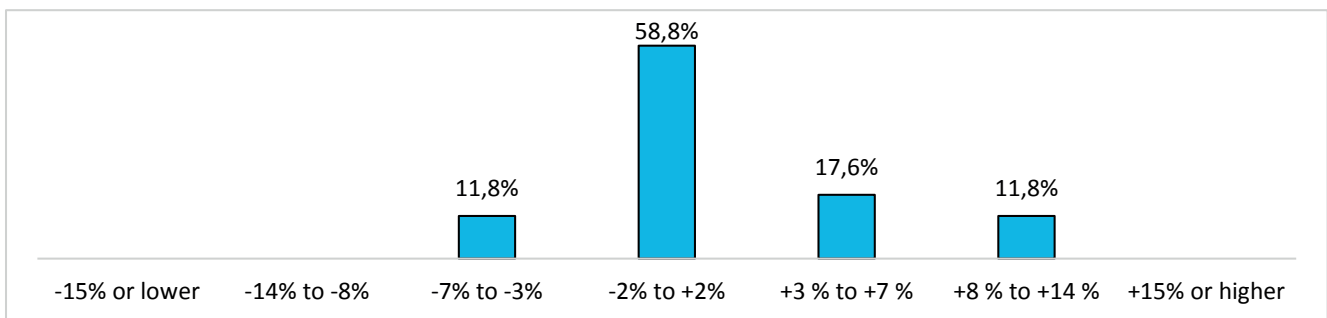
Banks with 200 or more employees



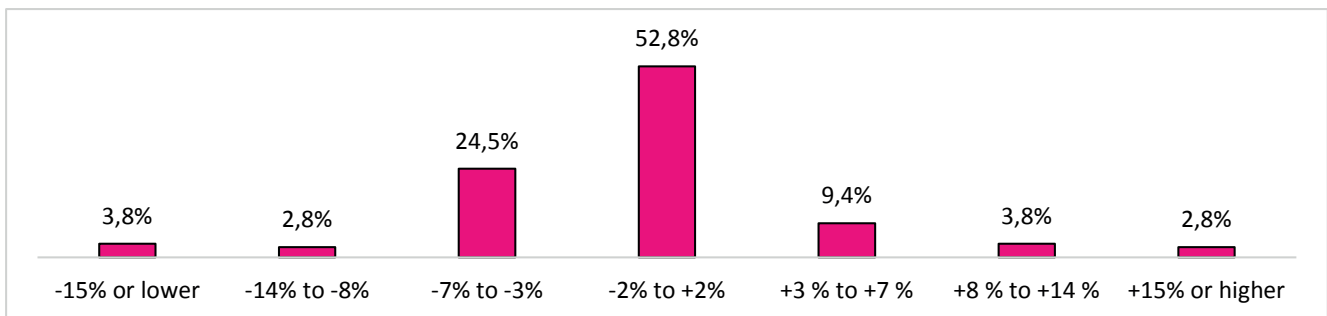
Banks with 50 to 199 employees



Banks with 1 to 49 employees



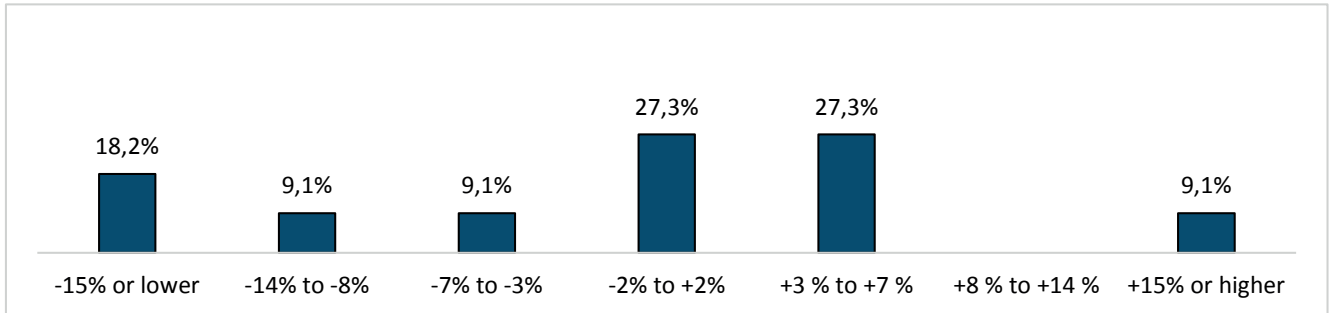
Independent asset managers (all categories)



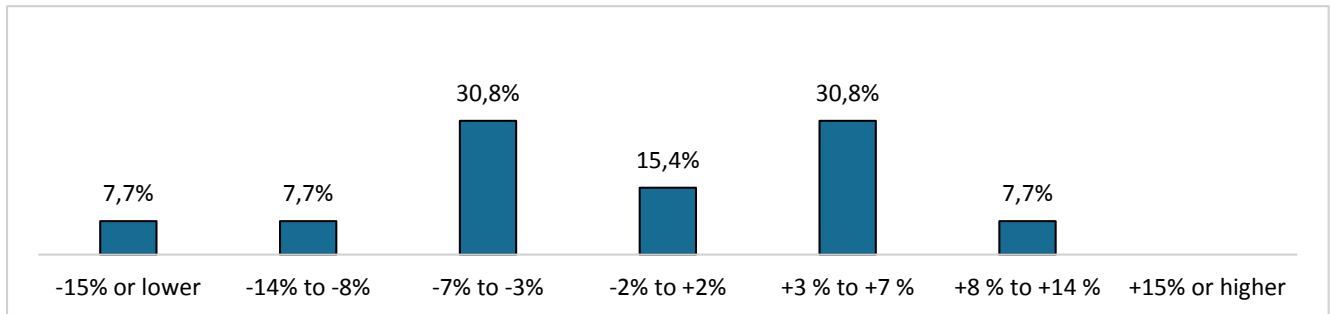
## Year-on-year change, first semester 2015 vs. first semester 2014

### 4. General operating expenses (excluding wages)

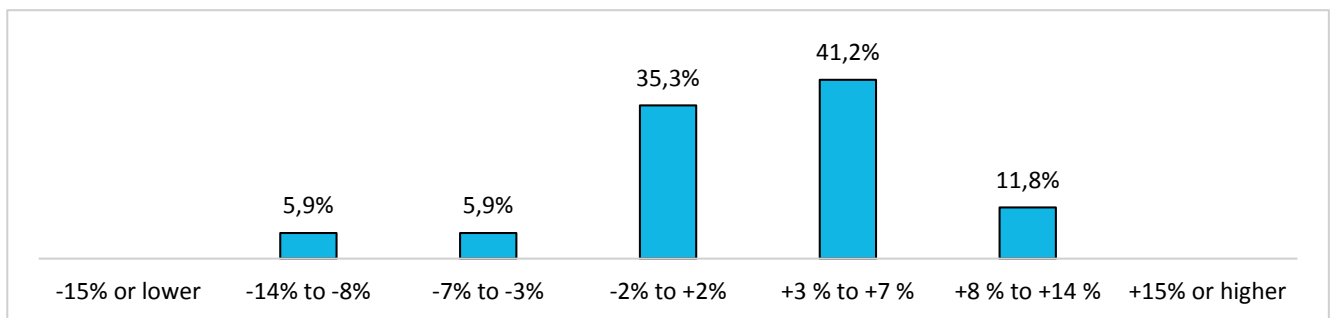
Banks with 200 or more employees



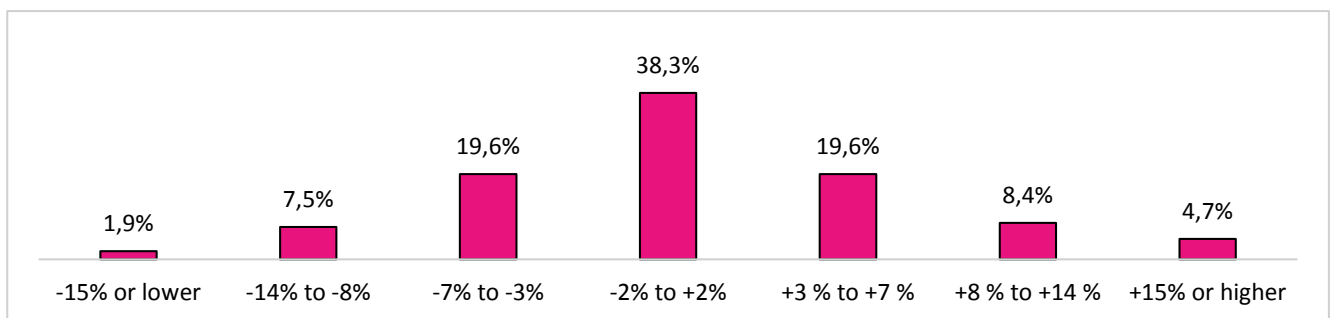
Banks with 50 to 199 employees



Banks with 1 to 49 employees



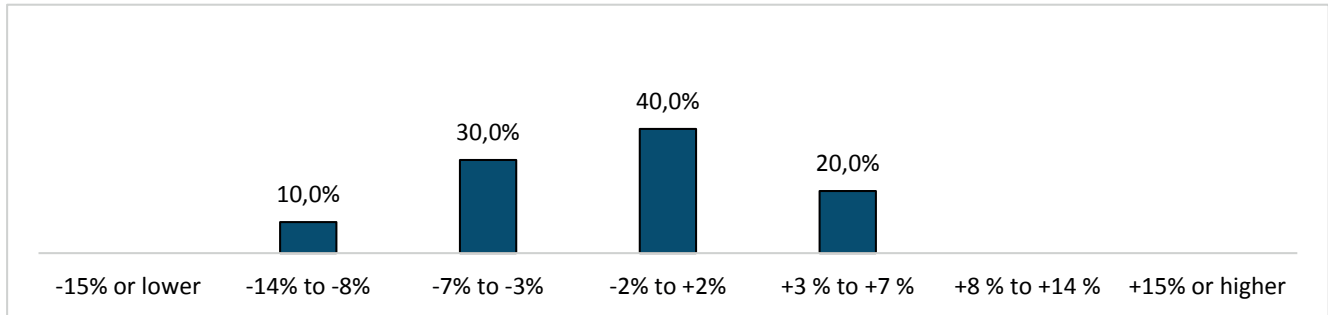
Independent asset managers (all categories)



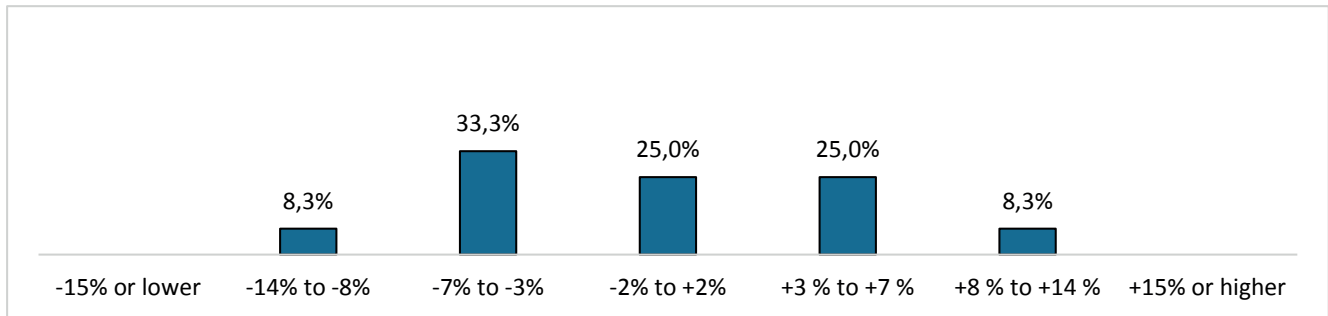
## Year-on-year change, first semester 2015 vs. first semester 2014

### 5. Number of employees

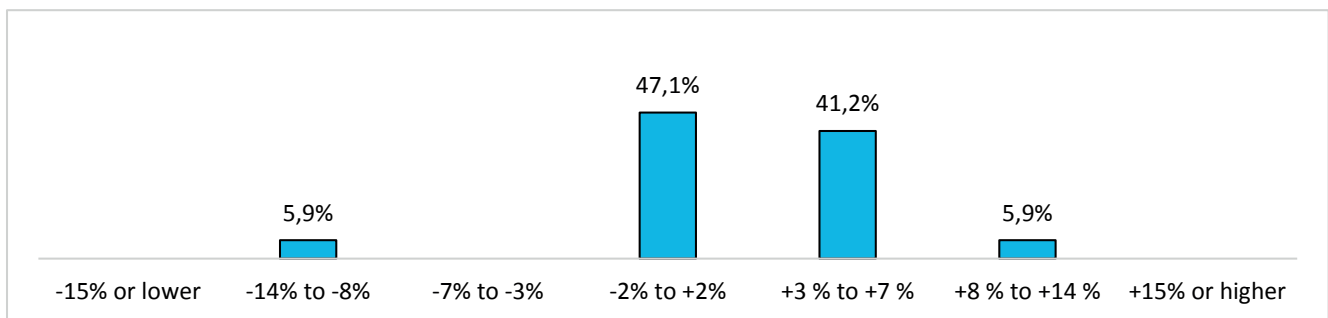
Banks with 200 or more employees



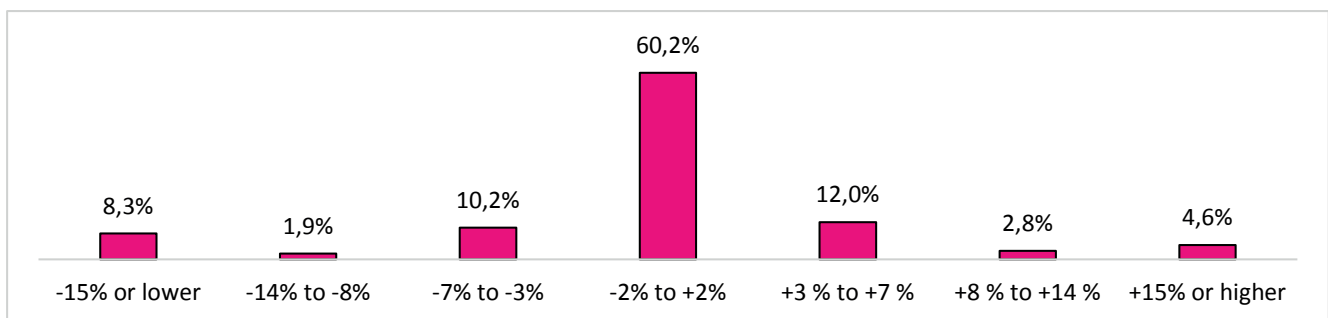
Banks with 50 to 199 employees



Banks with 1 to 49 employees



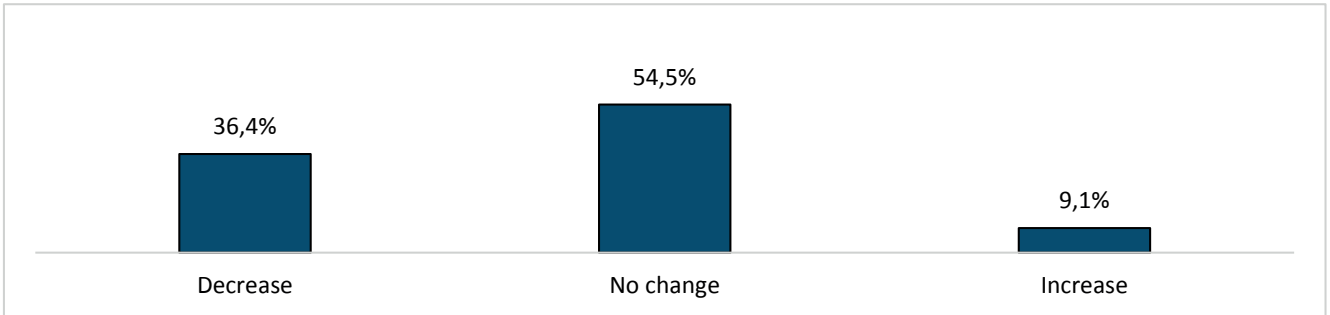
Independent asset managers (all categories)



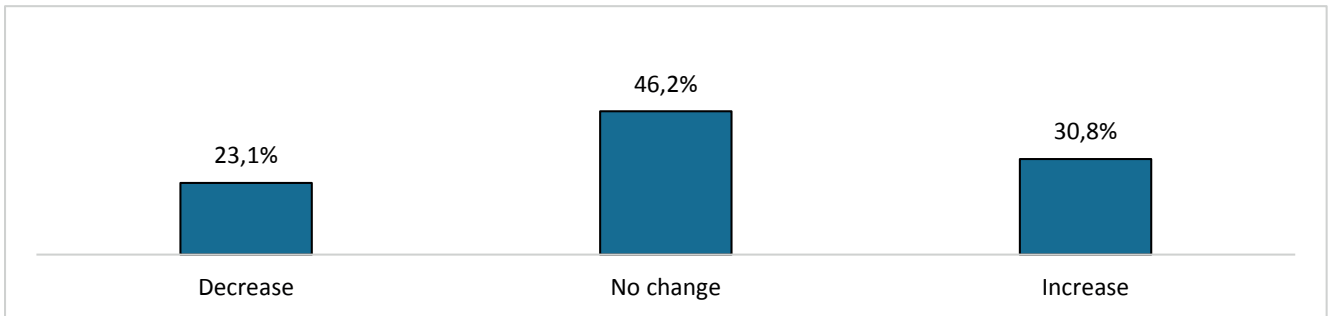
## Year-on-year change, first semester 2015 vs. first semester 2014

### 6a. Change in number of employees in Front office

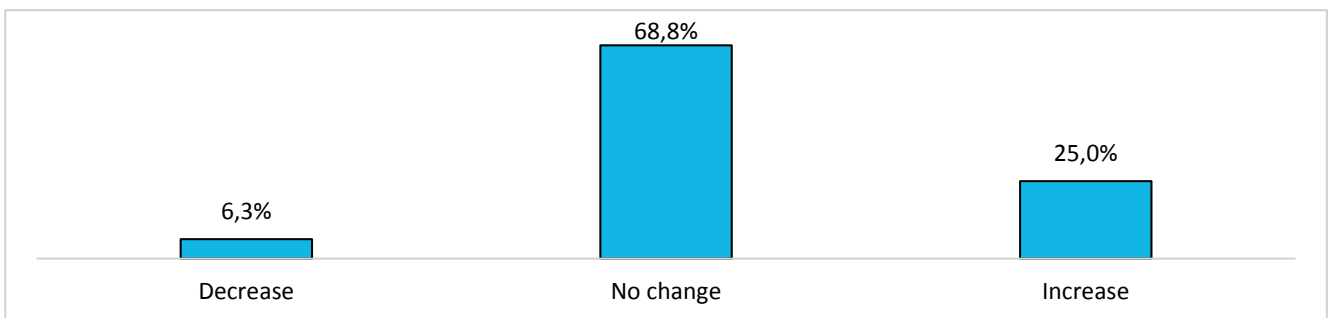
Banks with 200 or more employees



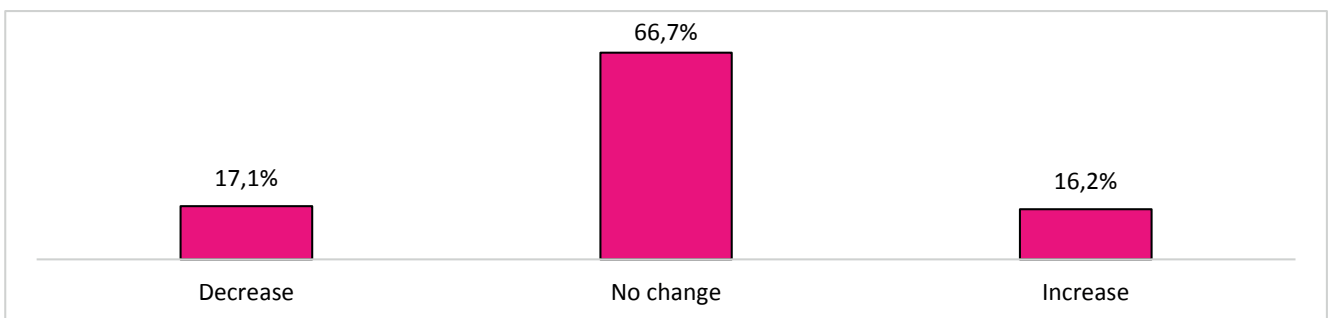
Banks with 50 to 199 employees



Banks with 1 to 49 employees



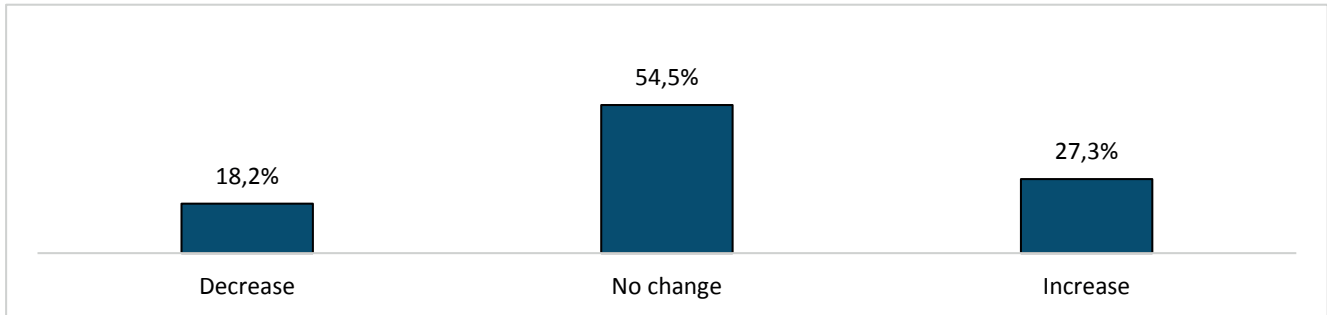
Independent asset managers (all categories)



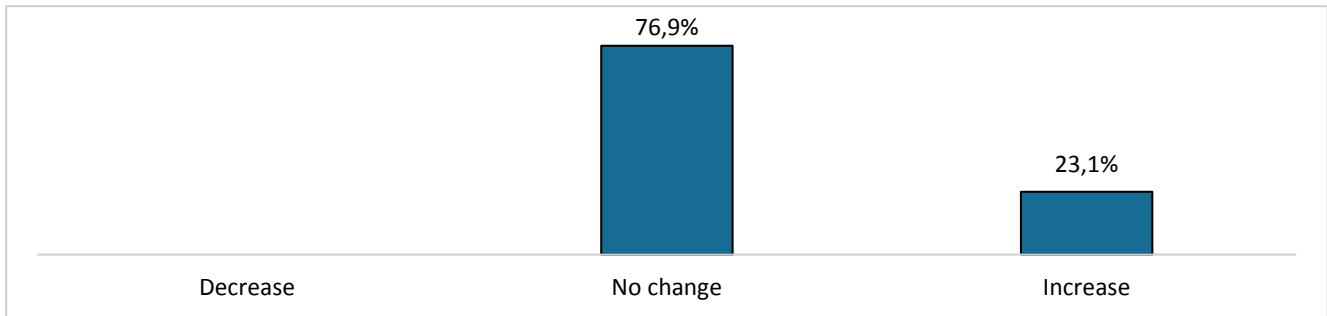
## Year-on-year change, first semester 2015 vs. first semester 2014

### 6b. Change in number of employees in Corporate (general management, risk management, legal, etc.)

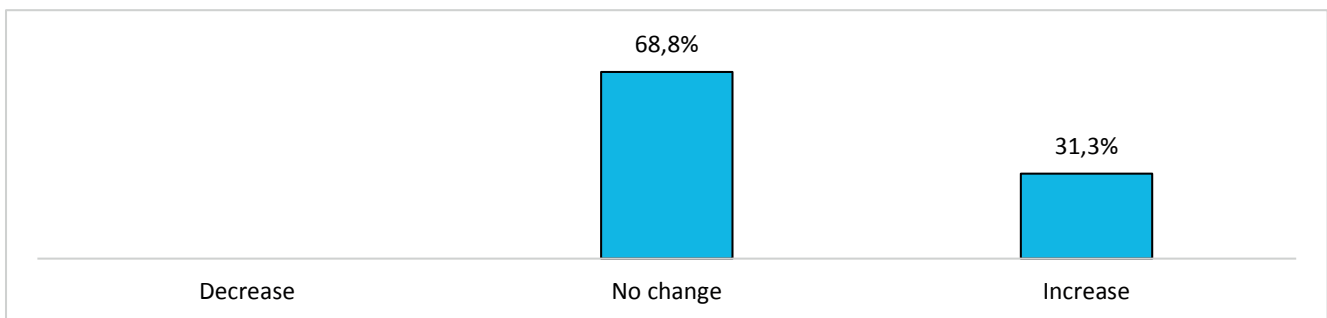
#### Banks with 200 or more employees



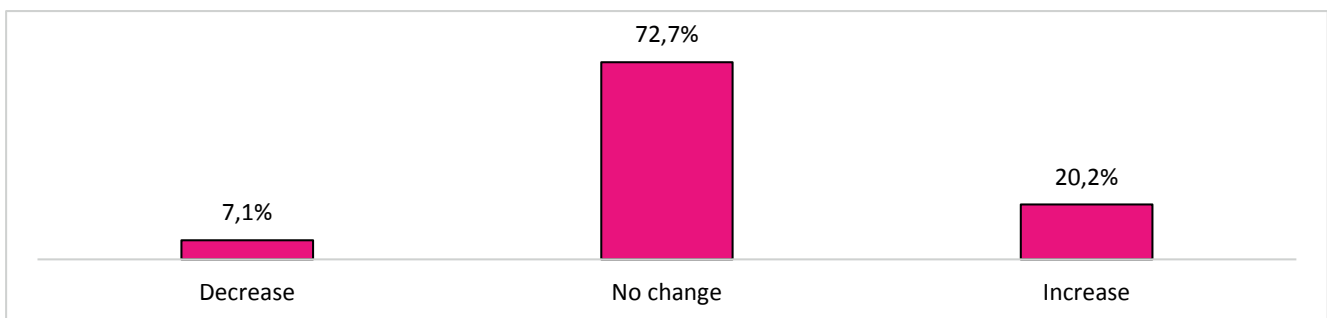
#### Banks with 50 to 199 employees



#### Banks with 1 to 49 employees



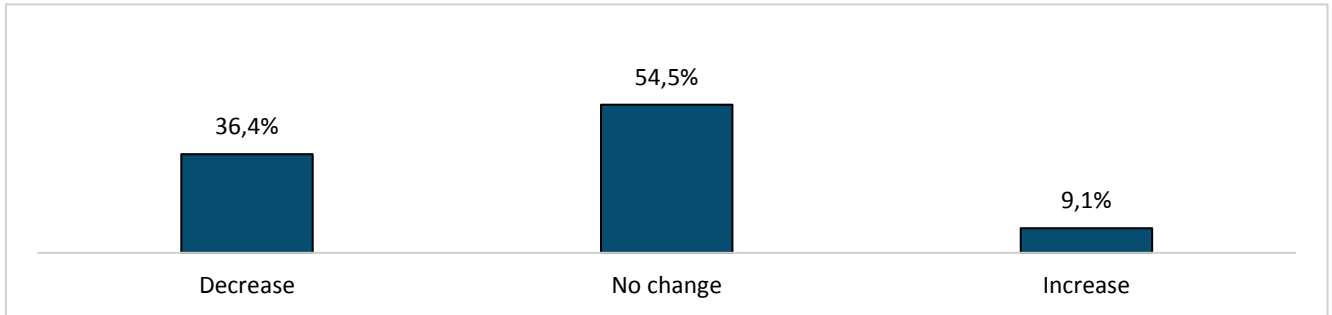
#### Independent asset managers (all categories)



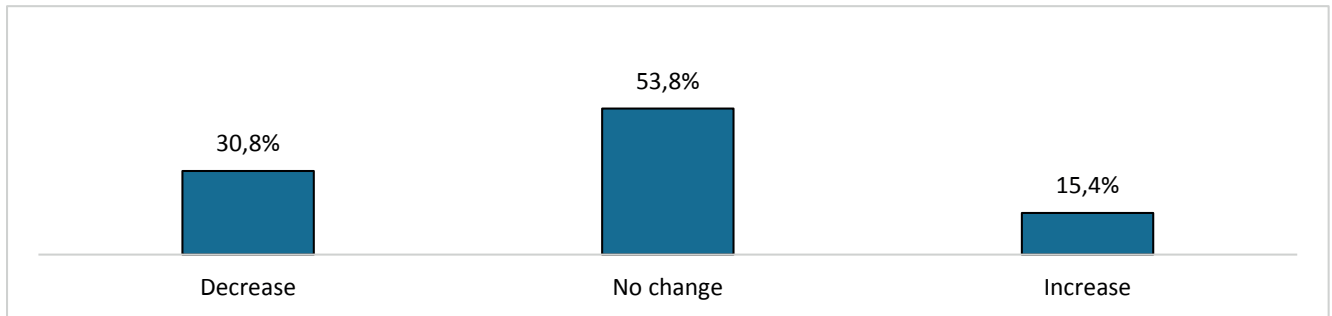
## Year-on-year change, first semester 2015 vs. first semester 2014

### 6c. Change in number of employees in Operations (excluding information technology)

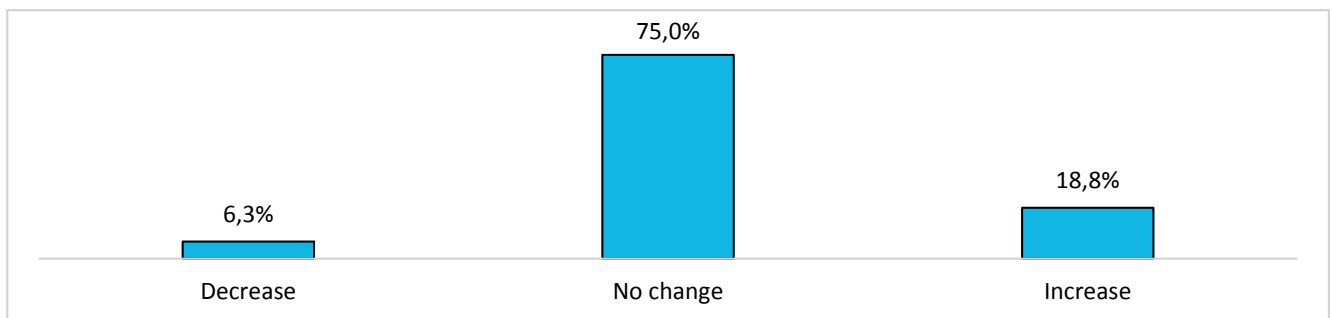
#### Banks with 200 or more employees



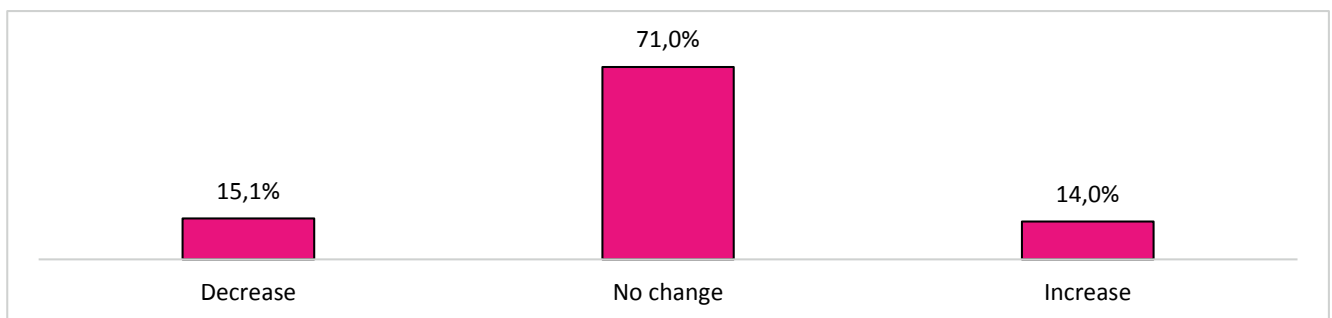
#### Banks with 50 to 199 employees



#### Banks with 1 to 49 employees



#### Independent asset managers (all categories)

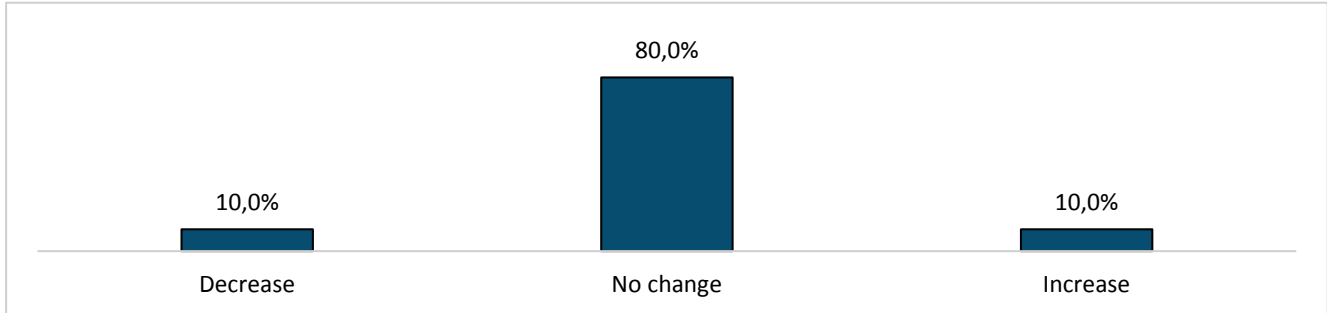




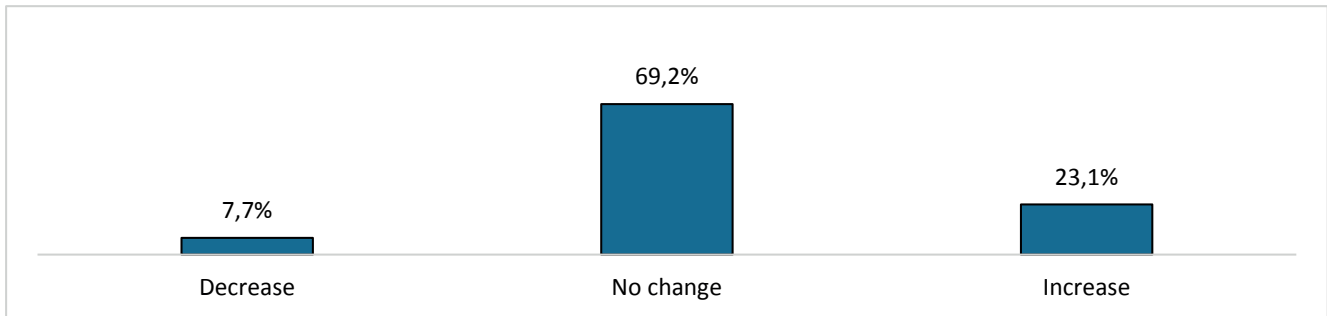
## Year-on-year change, first semester 2015 vs. first semester 2014

### 6d. Change in number of employees in Information technology

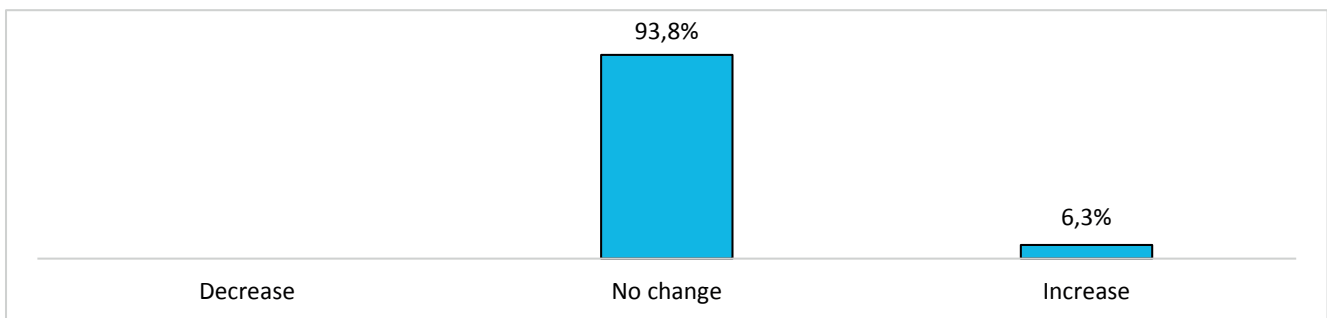
Banks with 200 or more employees



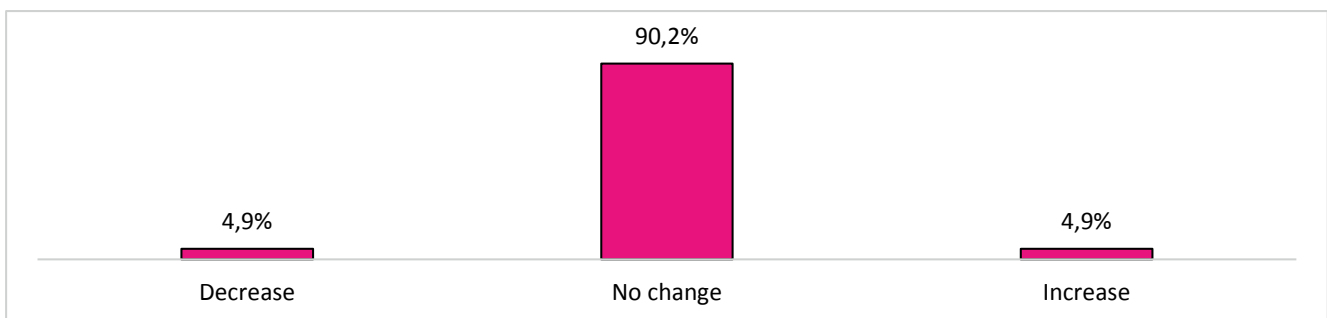
Banks with 50 to 199 employees



Banks with 1 to 49 employees



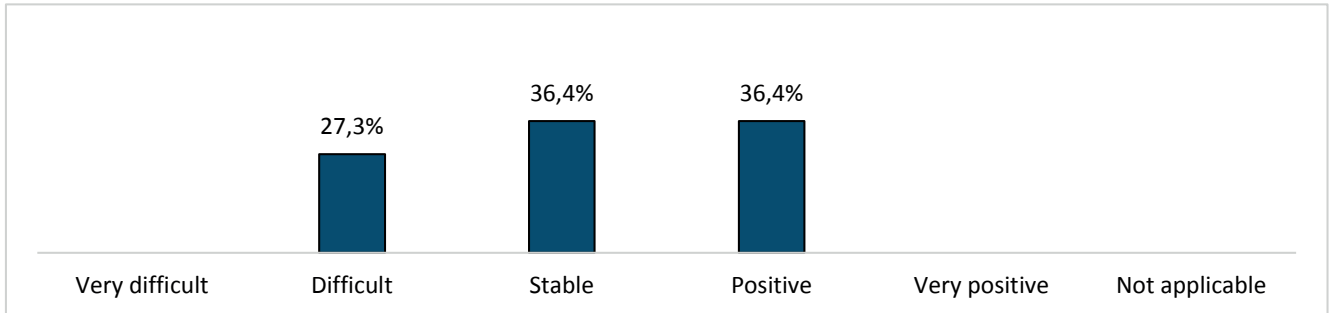
Independent asset managers (all categories)



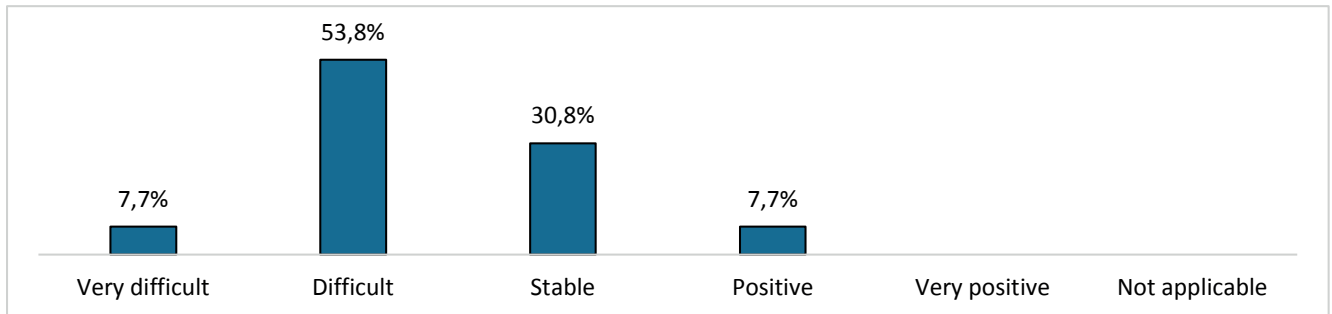
## Year-on-year change, first semester 2015 vs. first semester 2014

7. In the area of wealth management, for your company, the first semester 2015 was

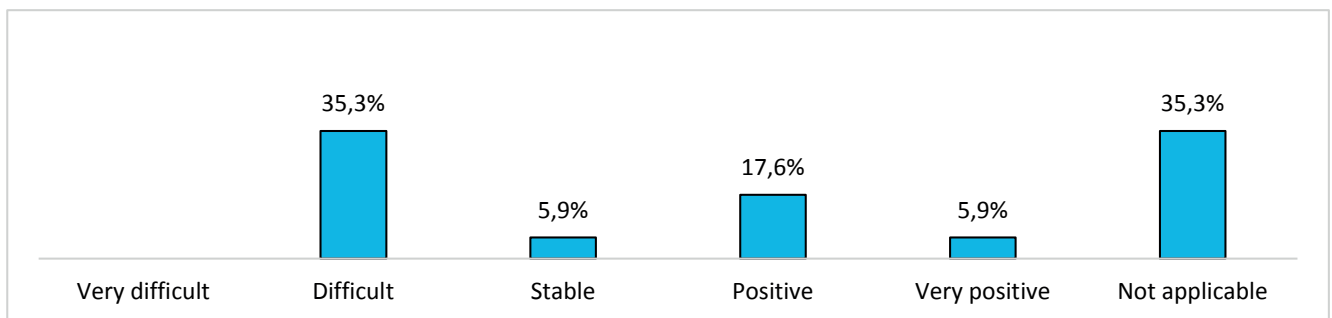
Banks with 200 or more employees



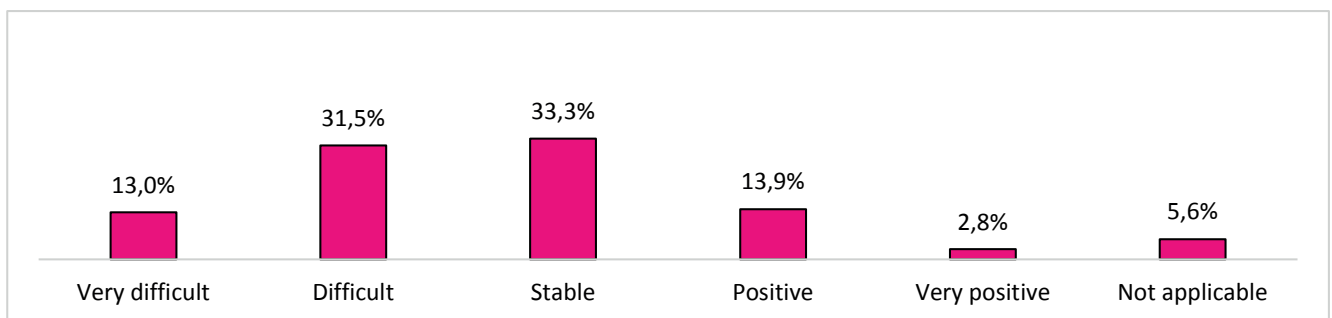
Banks with 50 to 199 employees



Banks with 1 to 49 employees



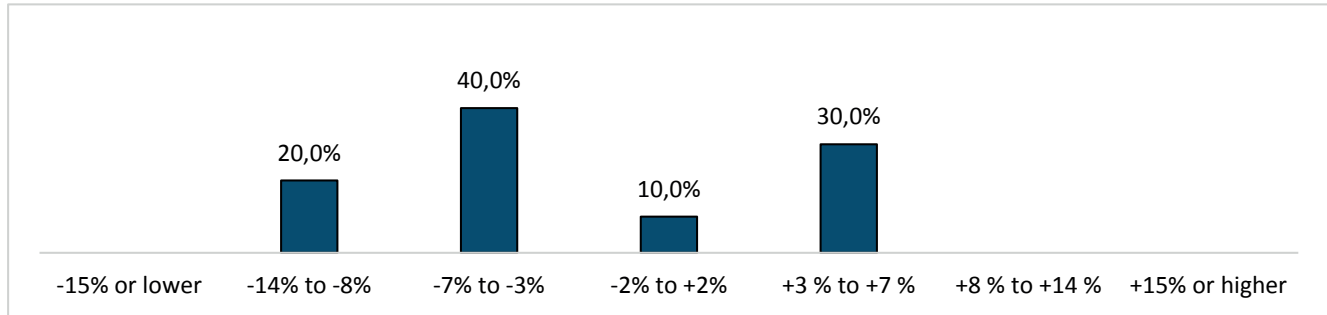
Independent asset managers (all categories)



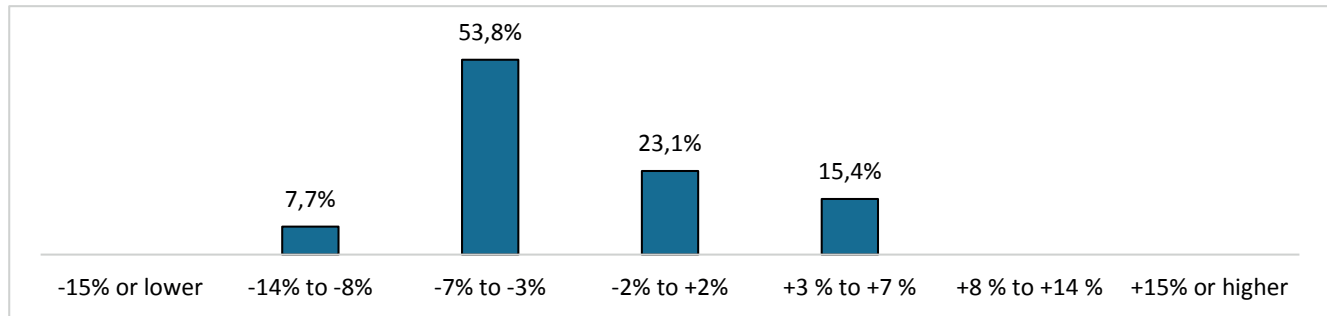
## Questions specific to wealth management and institutional asset management

### 8. Change in assets under management in CHF, 31.12.2014 to 30.6.2015

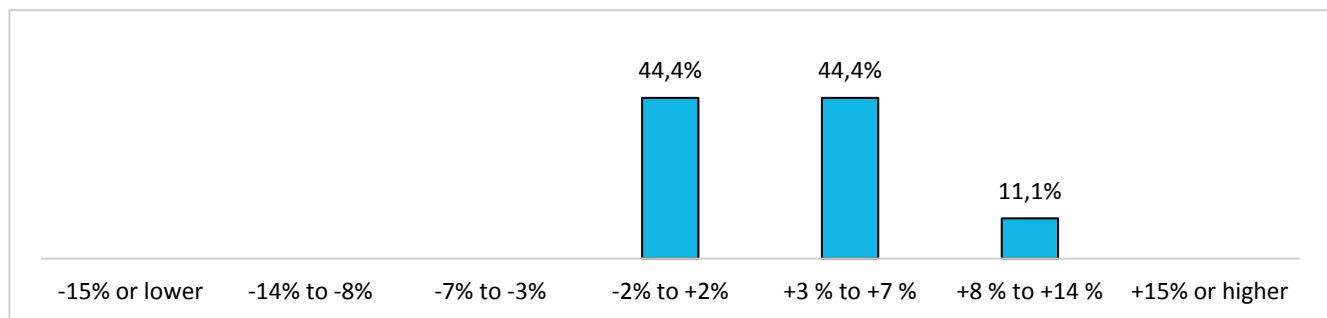
Banks with 200 or more employees



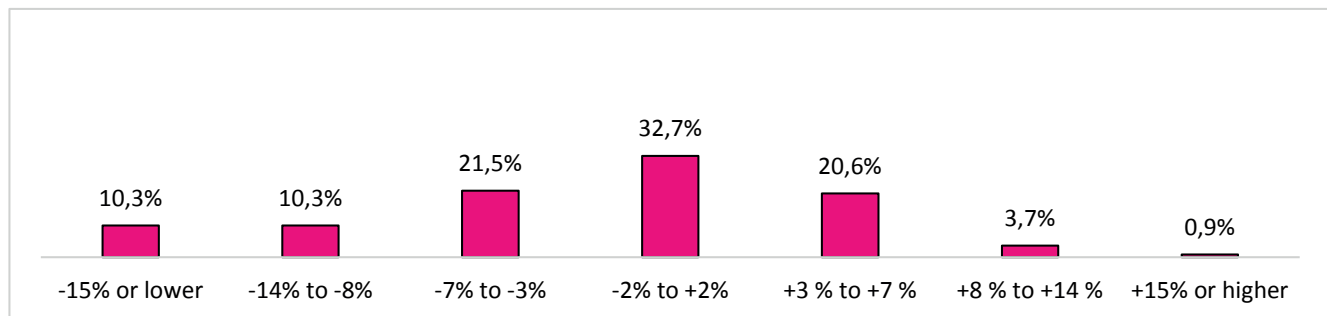
Banks with 50 to 199 employees



Banks with 1 to 49 employees



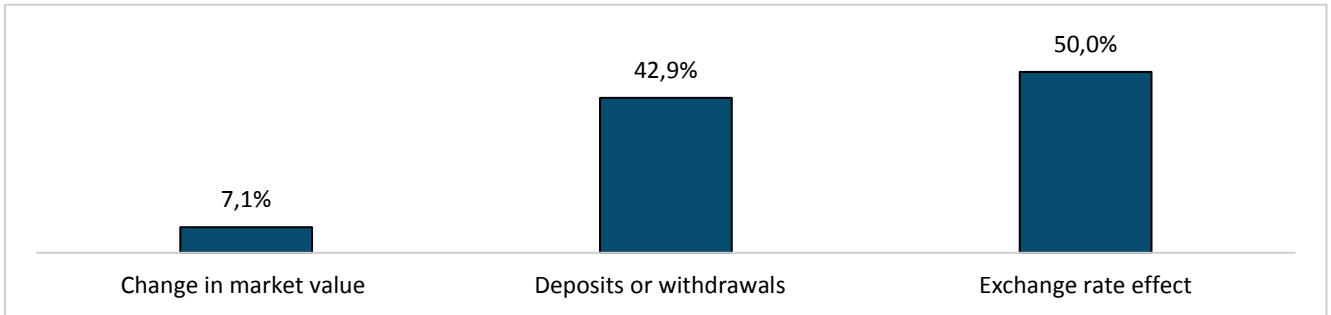
Independent asset managers (all categories)



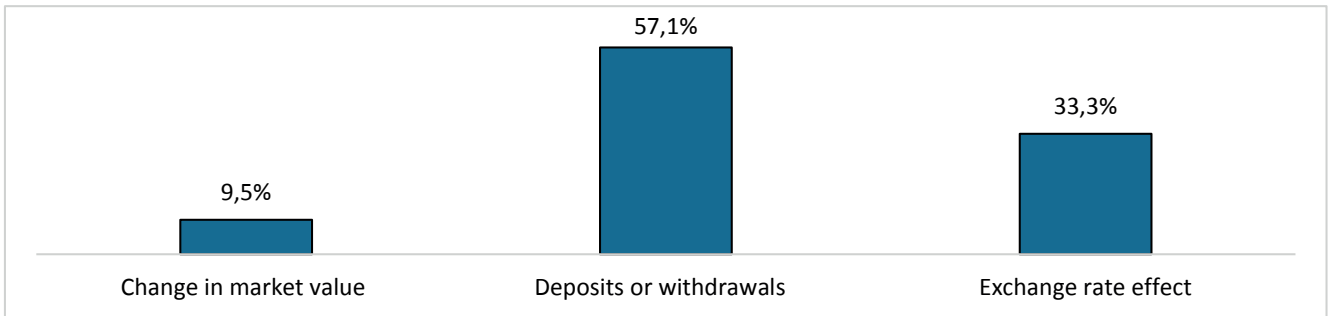
## Questions specific to wealth management and institutional asset management

### 9. Main cause of change was (more than one answer possible)

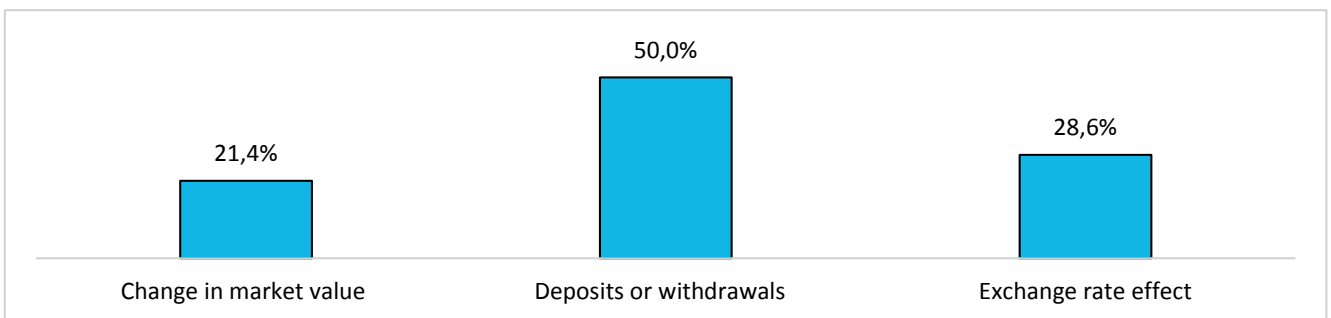
Banks with 200 or more employees



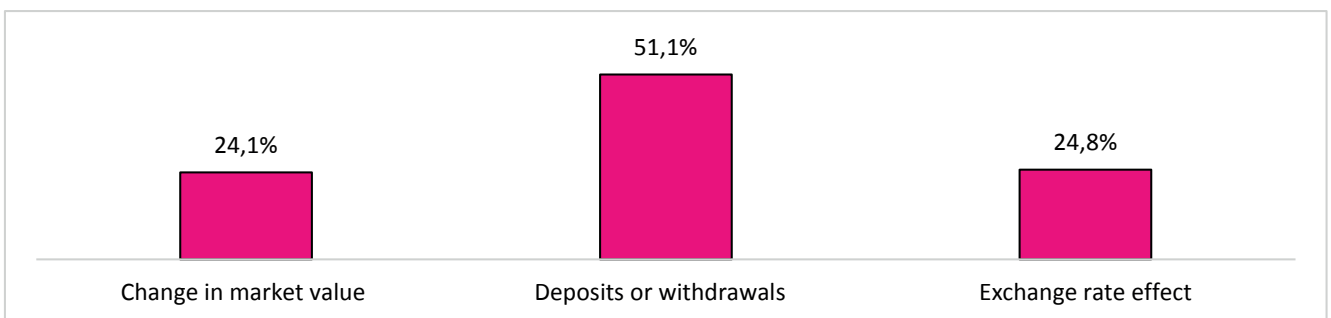
Banks with 50 to 199 employees



Banks with 1 to 49 employees



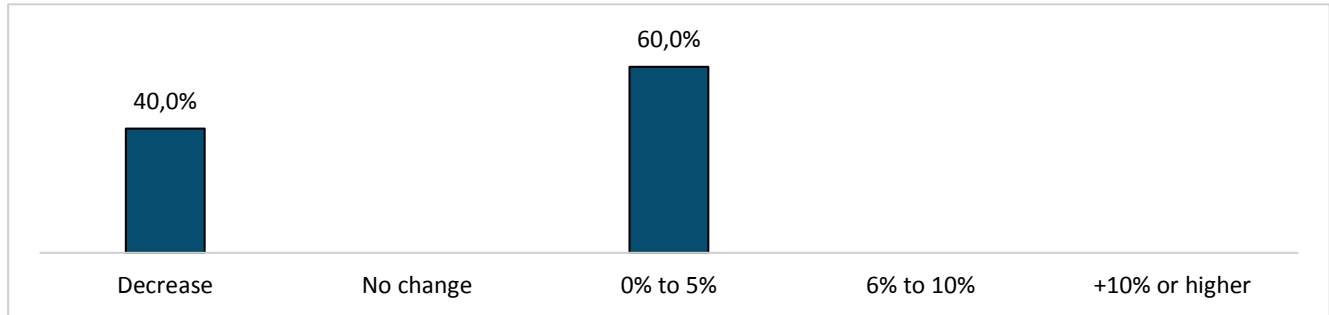
Independent asset managers (all categories)



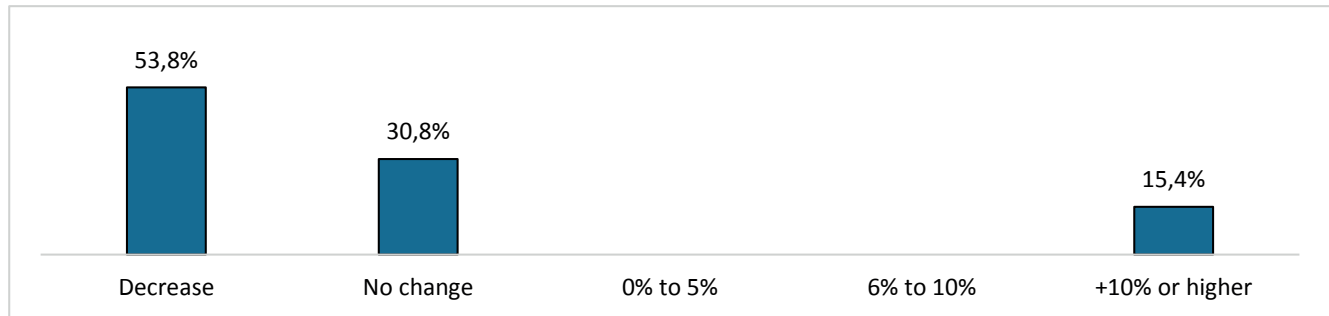
## Questions specific to wealth management and institutional asset management

### 10a. Private asset management: overall change in net deposits, 31.12.2014 to 30.6.2015

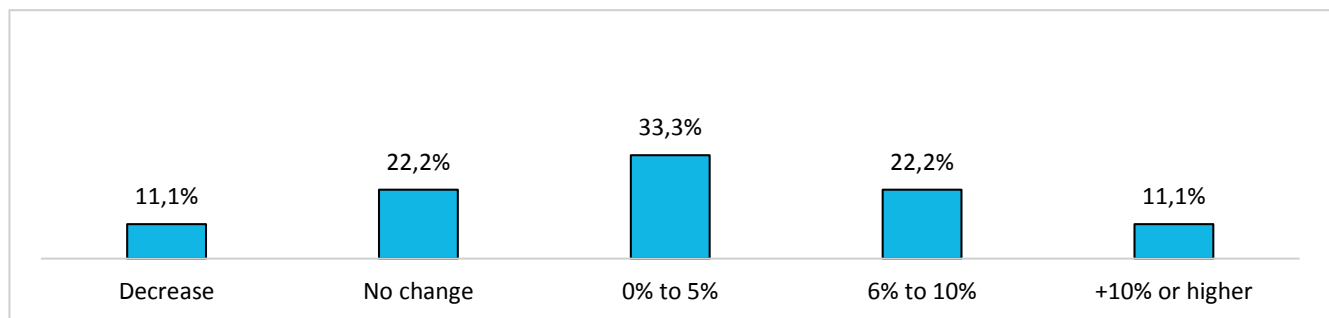
#### Banks with 200 or more employees



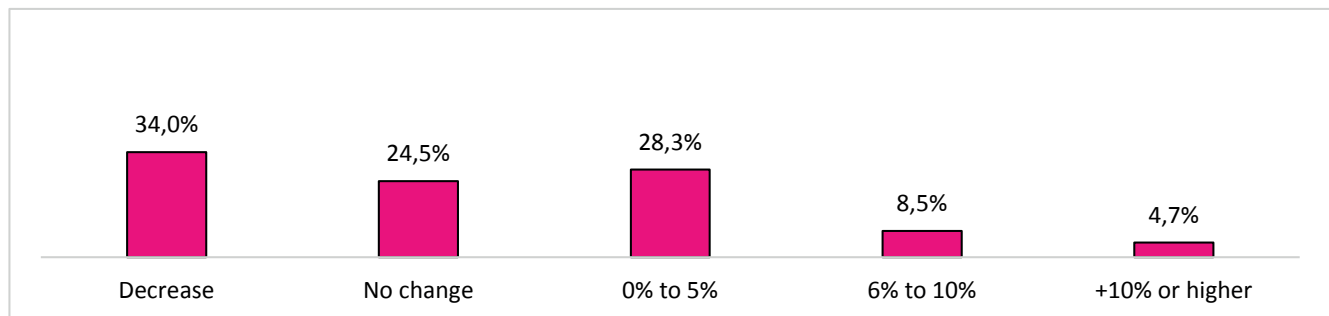
#### Banks with 50 to 199 employees



#### Banks with 1 to 49 employees



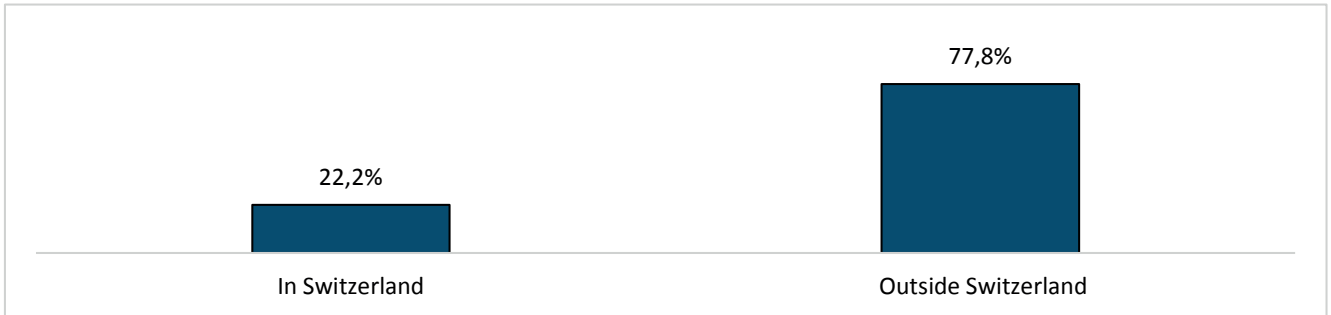
#### Independent asset managers (all categories)



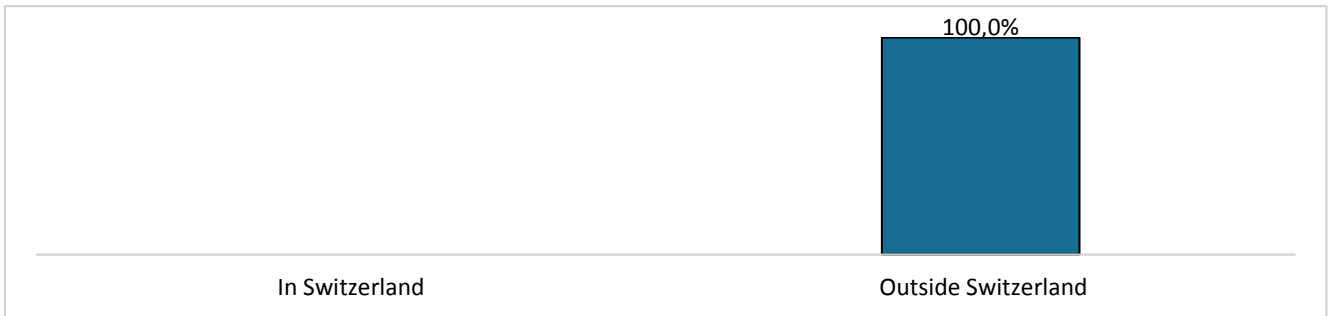
## Questions specific to wealth management and institutional asset management

10b. This change in assets was due primarily to clients residing

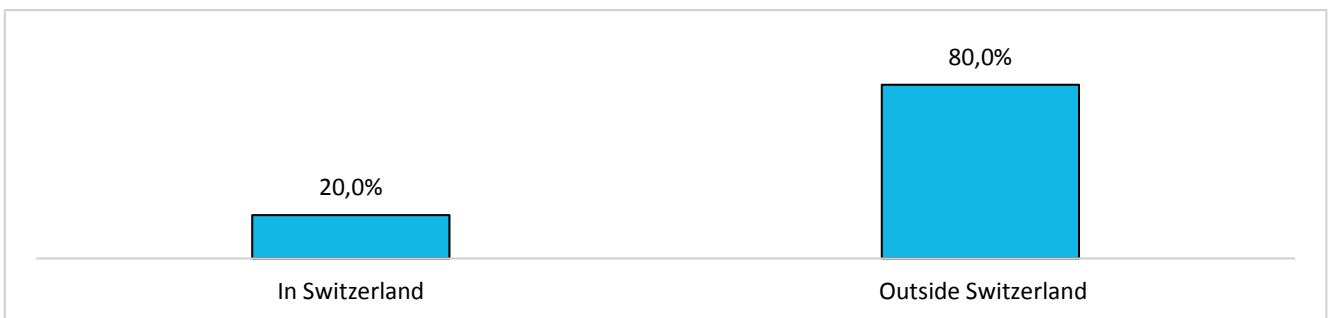
Banks with 200 or more employees



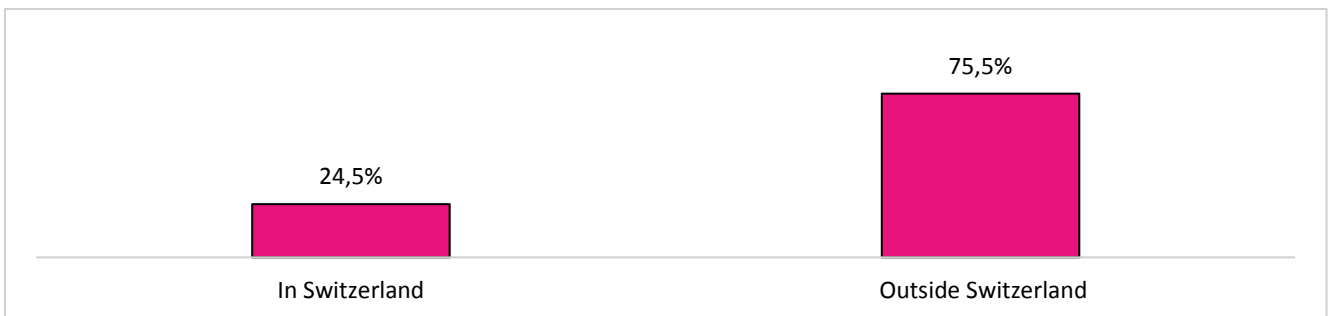
Banks with 50 to 199 employees



Banks with 1 to 49 employees



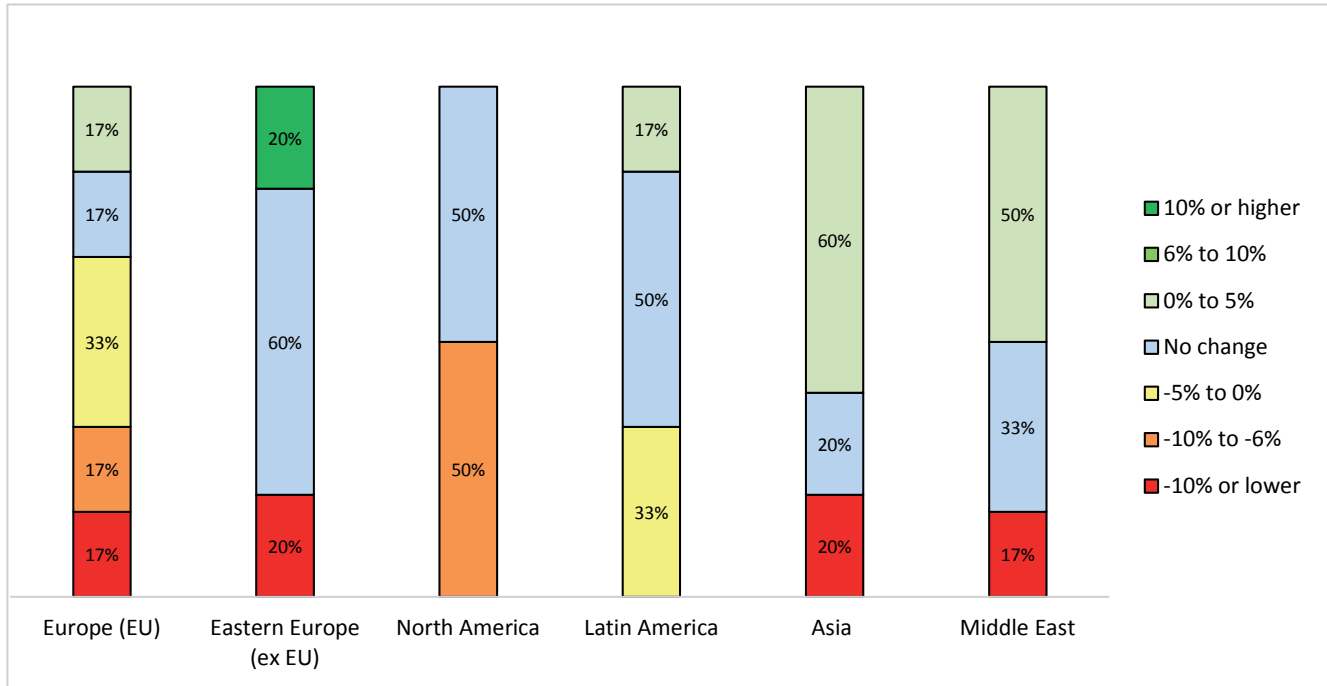
Independent asset managers (all categories)



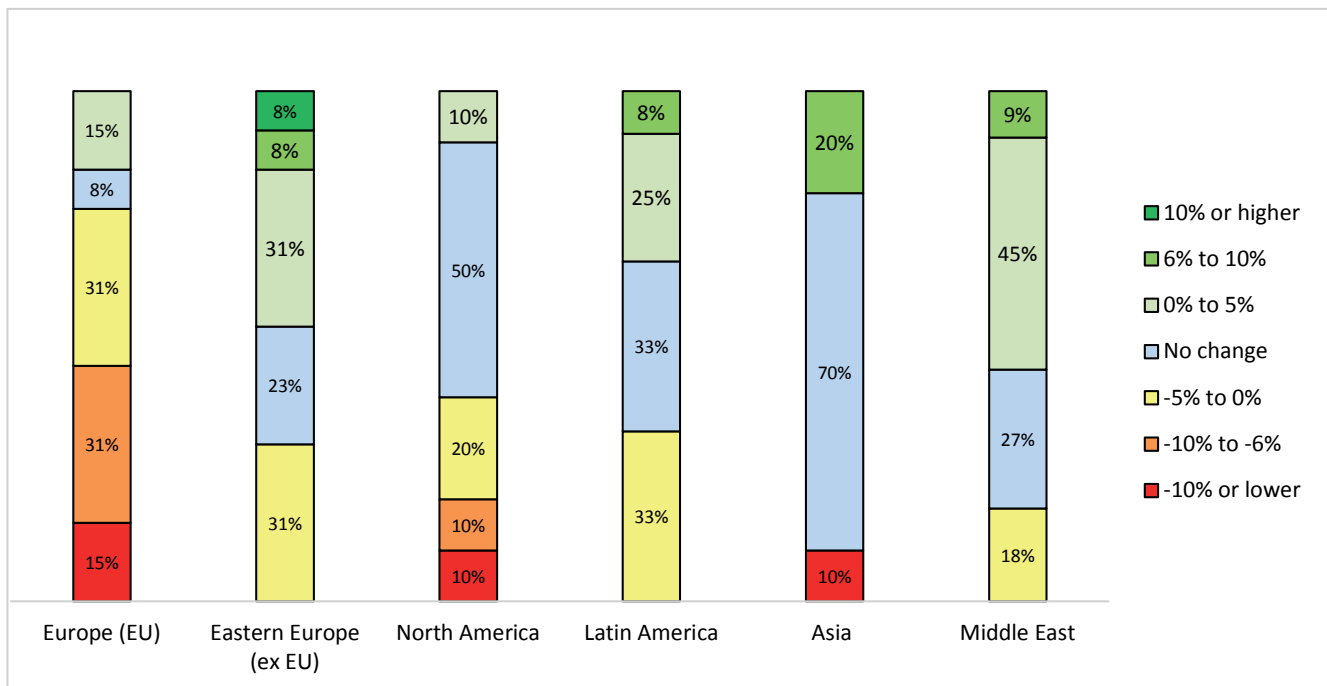
# Questions specific to wealth management and institutional asset management

## 10c. Wealth management: change in net deposits from outside Switzerland, by geographic area

Banks with 200 or more employees



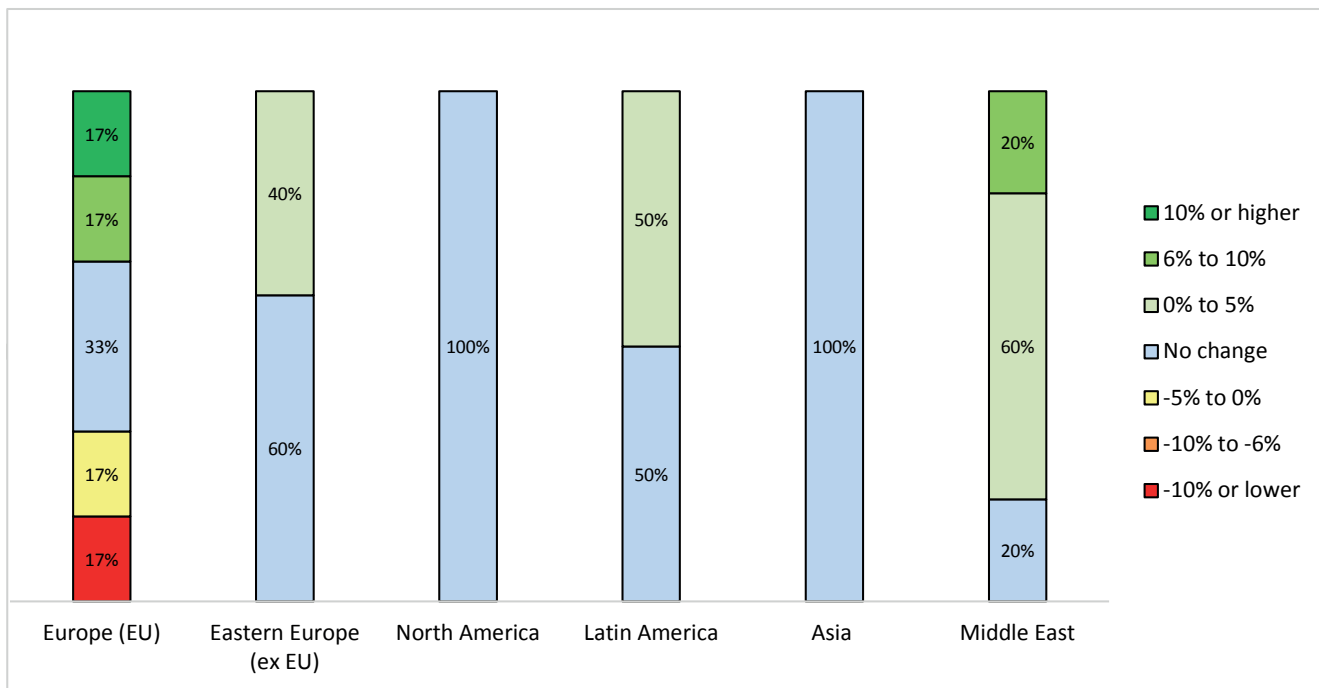
Banks with 50 to 199 employees



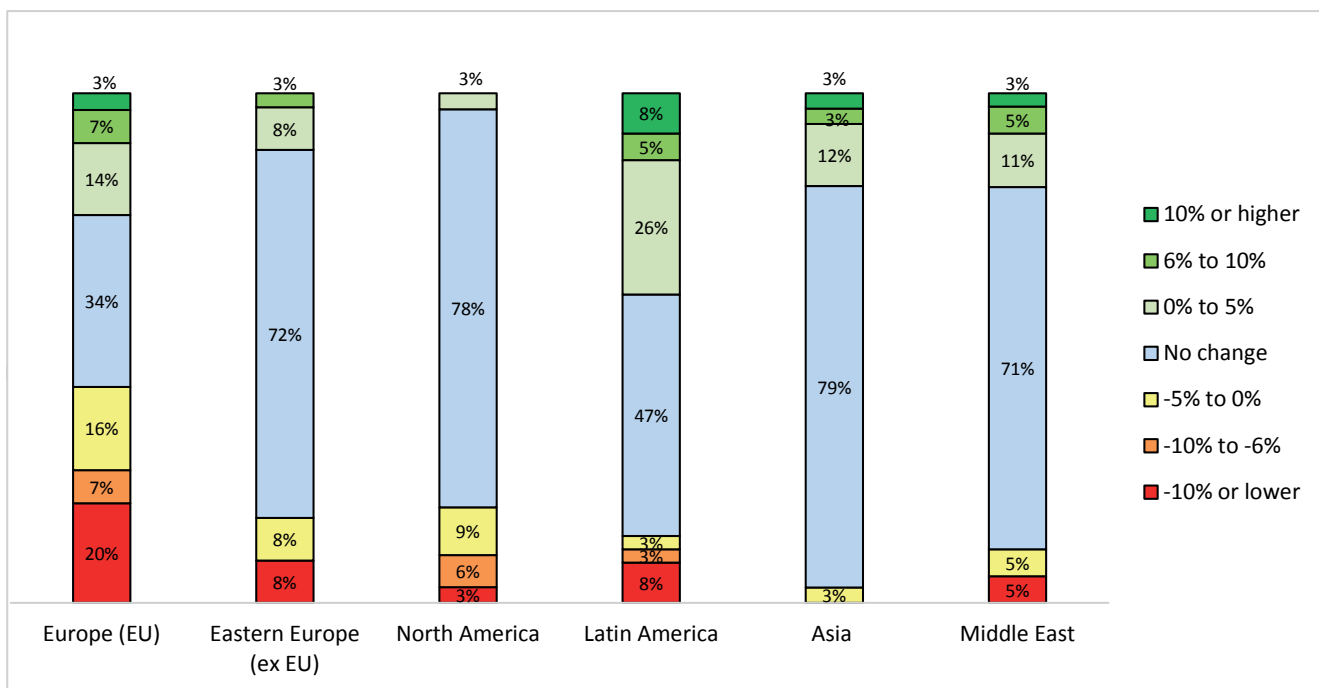
## Questions specific to wealth management and institutional asset management

### 10c. Wealth management: change in net deposits from outside Switzerland, by geographic area

Banks with 1 to 49 employees



Independent asset managers (all categories)

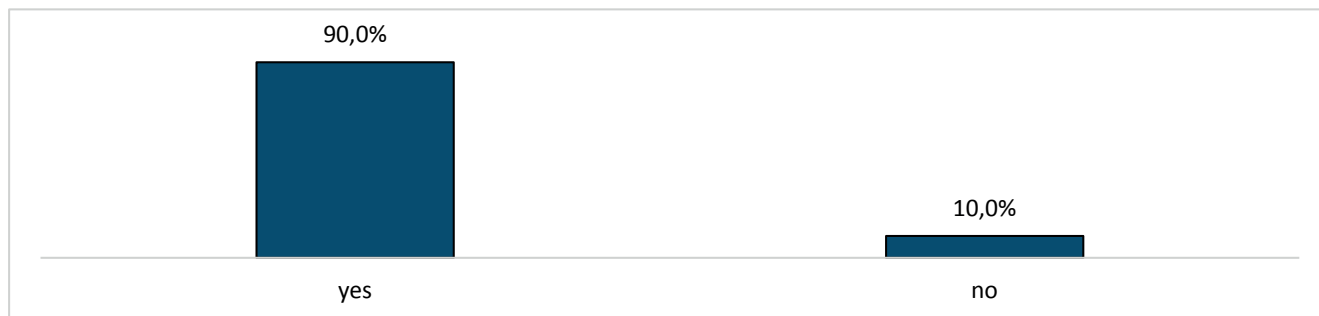




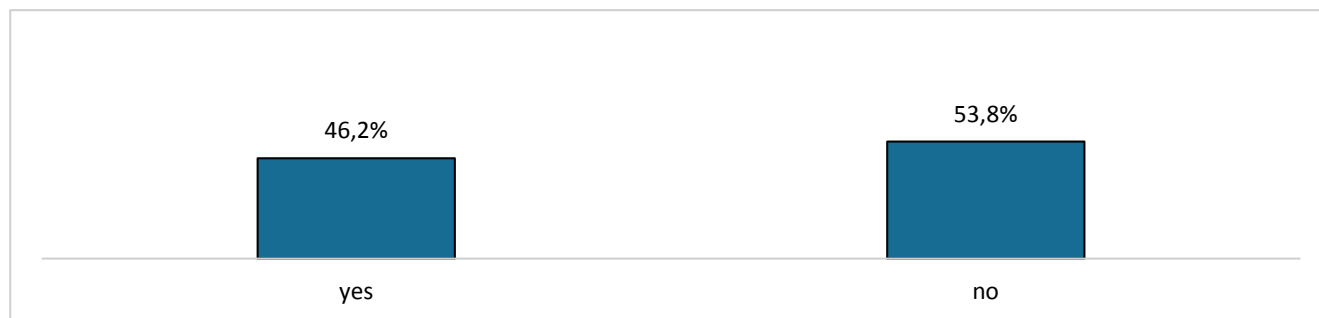
## Questions specific to wealth management and institutional asset management

11. Would your business model change significantly if Switzerland did not obtain facilitated access to European markets?

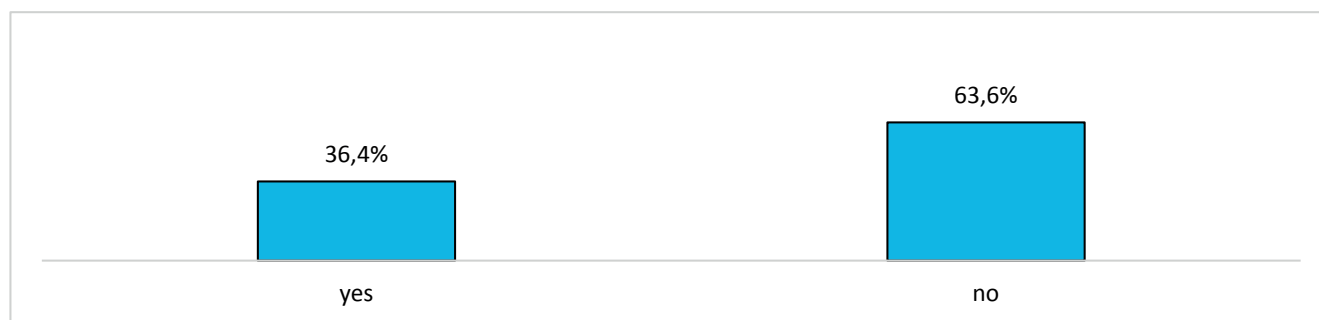
Banks with 200 or more employees



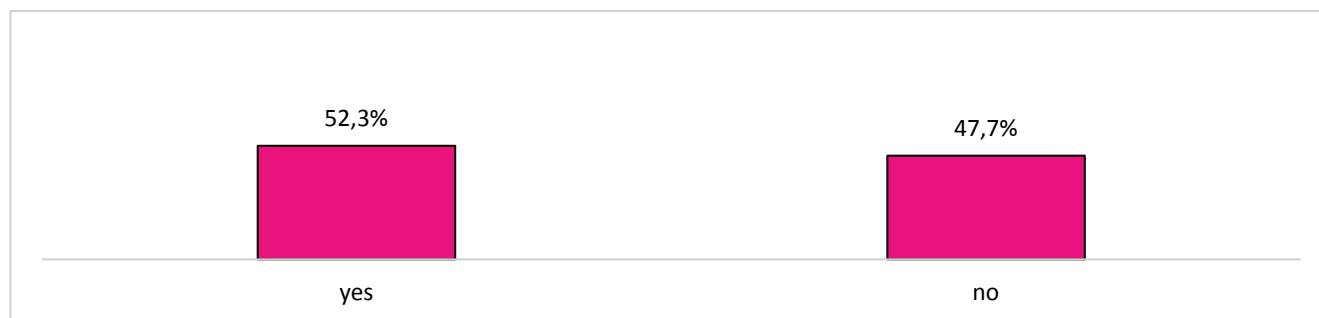
Banks with 50 to 199 employees



Banks with 1 to 49 employees



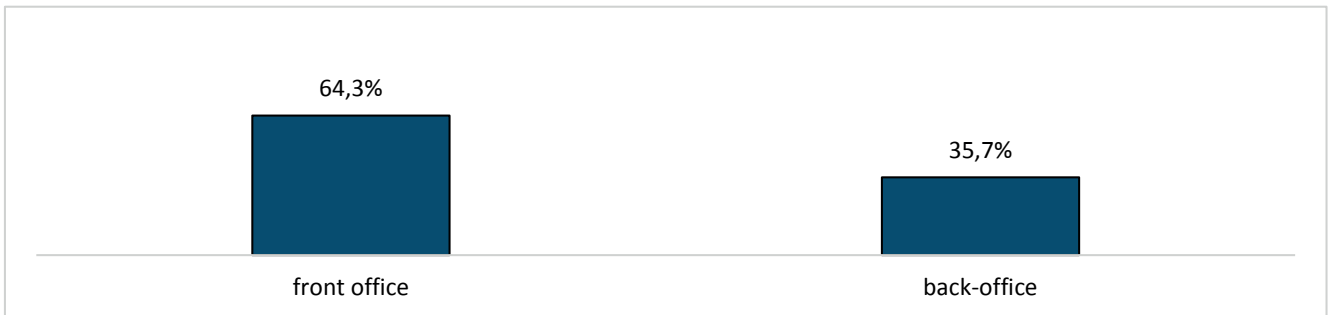
Independent asset managers (all categories)



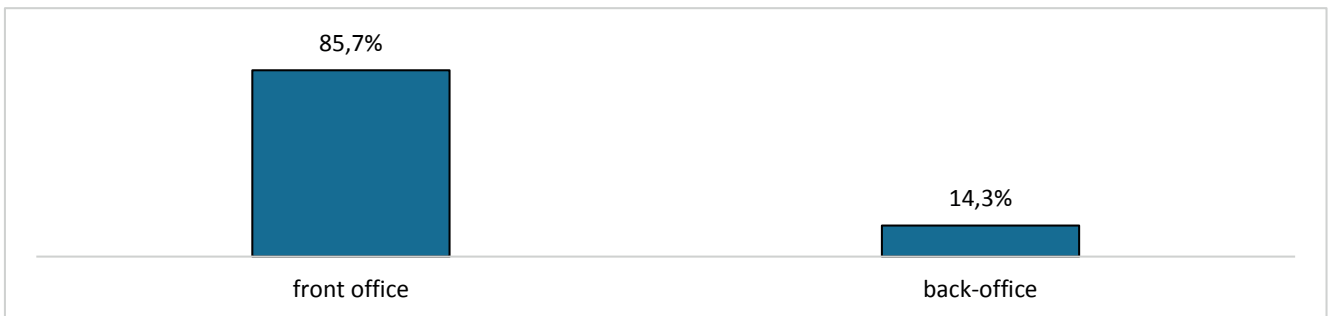
## Questions specific to wealth management and institutional asset management

11a. If yes, which area of your company would this affect most?

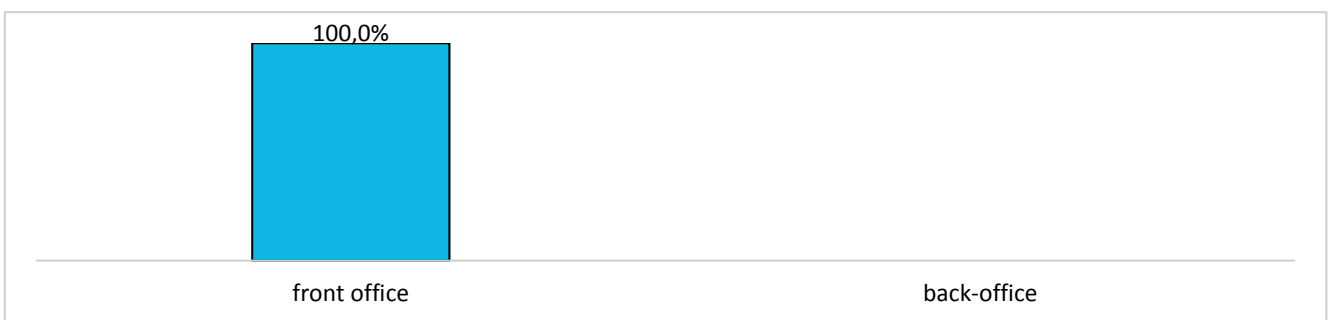
Banks with 200 or more employees



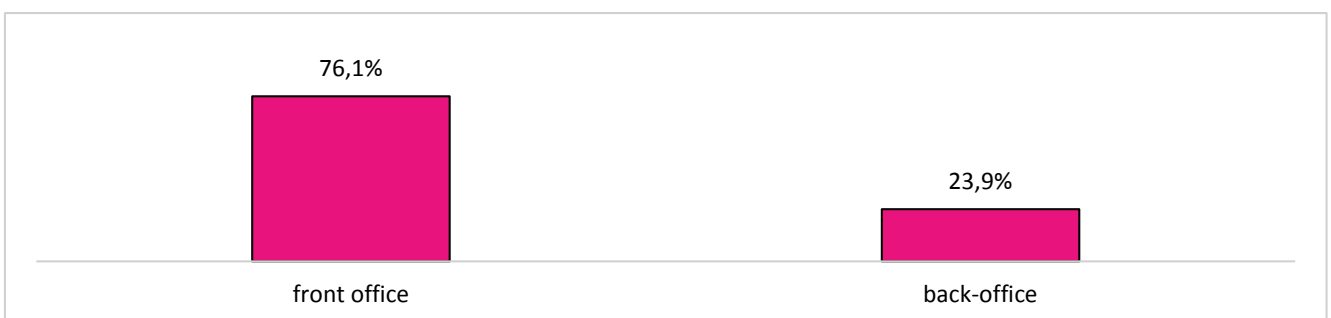
Banks with 50 to 199 employees



Banks with 1 to 49 employees



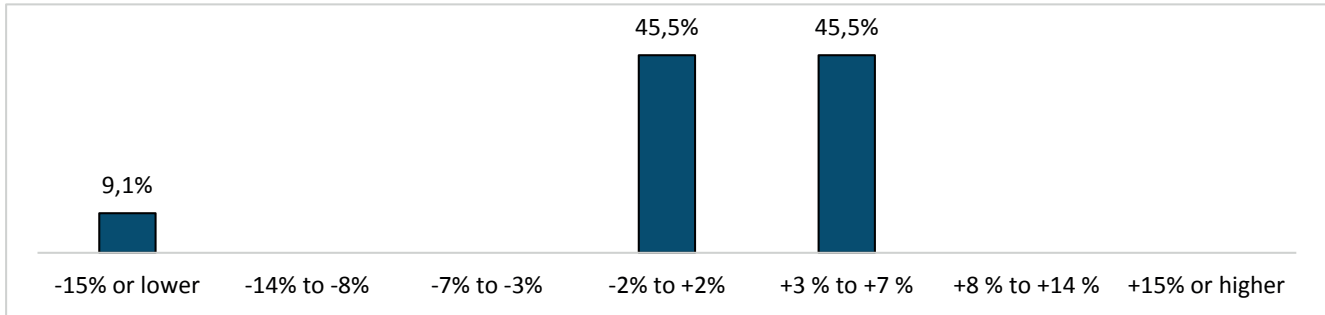
Independent asset managers (all categories)



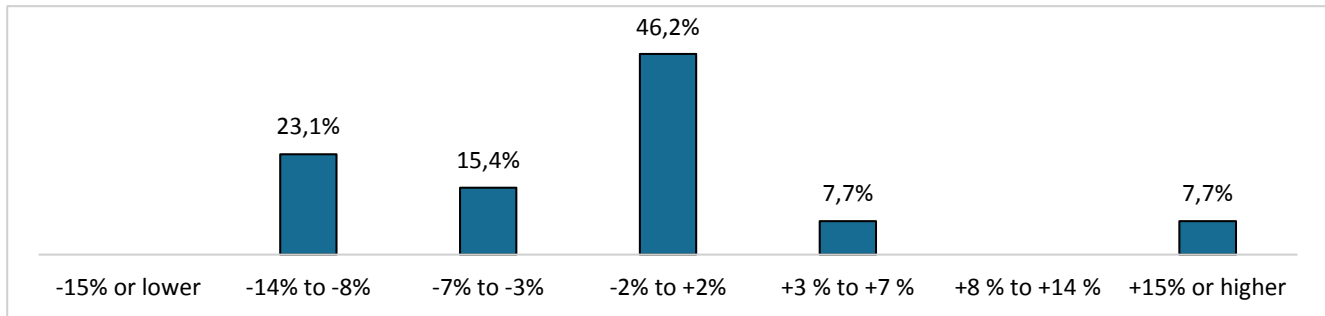
## Outlook for 2015 full year vs. 2014

### 12. Expected change in operating income (EBIT)

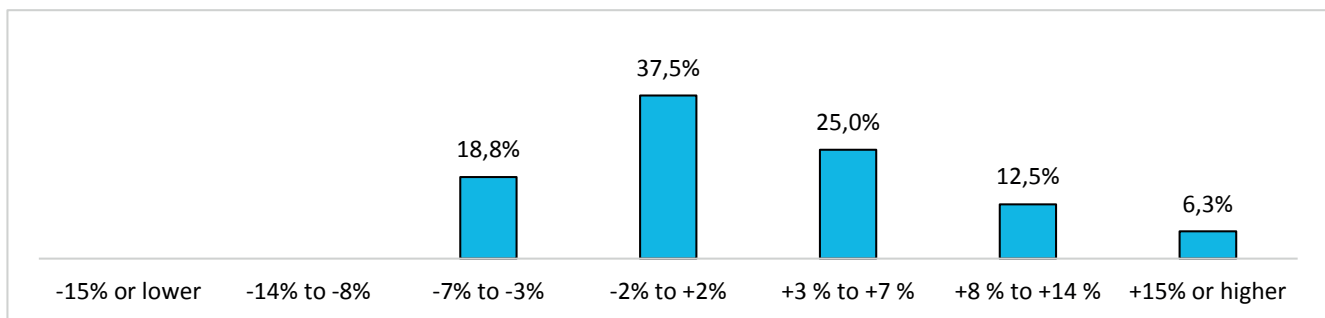
Banks with 200 or more employees



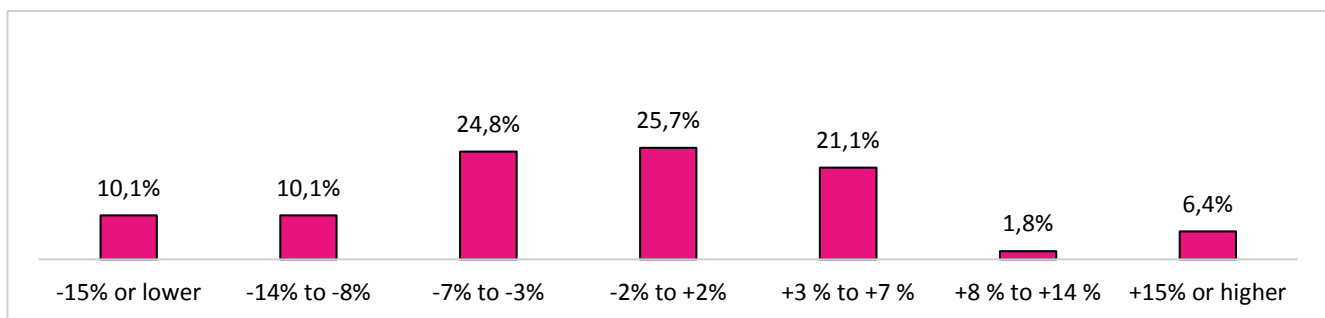
Banks with 50 to 199 employees



Banks with 1 to 49 employees



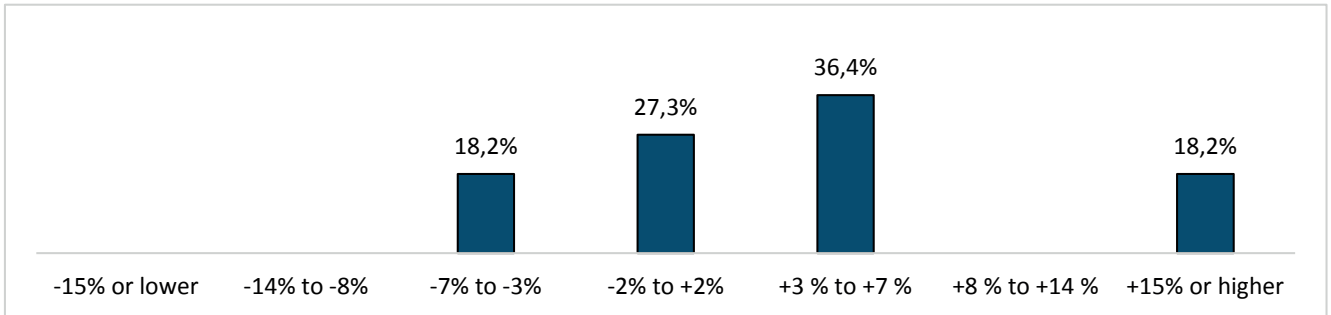
Independent asset managers (all categories)



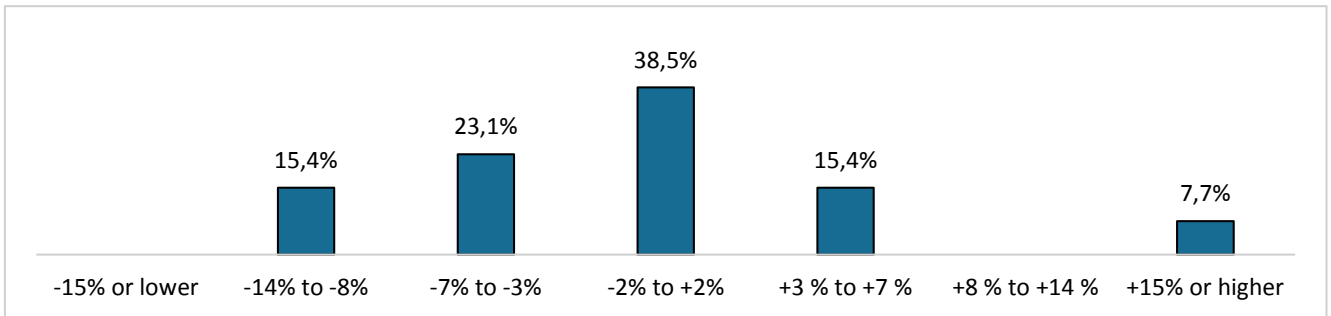
## Outlook for 2015 full year vs. 2014

### 13. Expected change in net profit

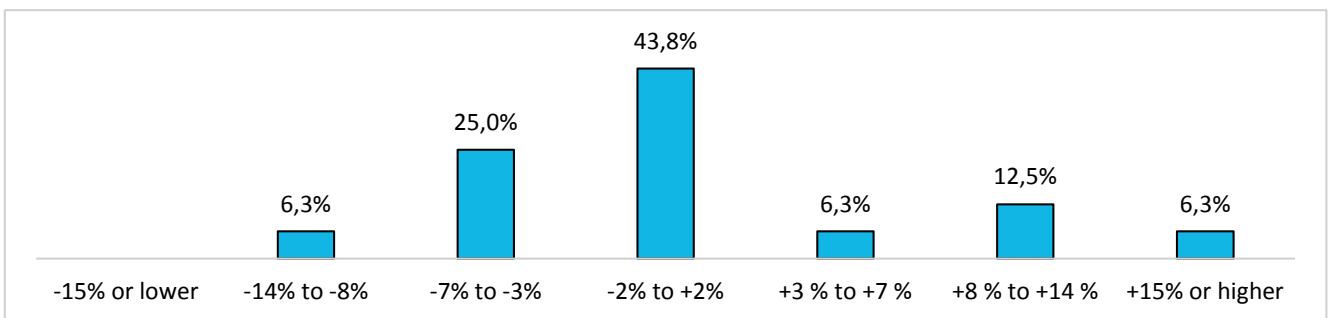
Banks with 200 or more employees



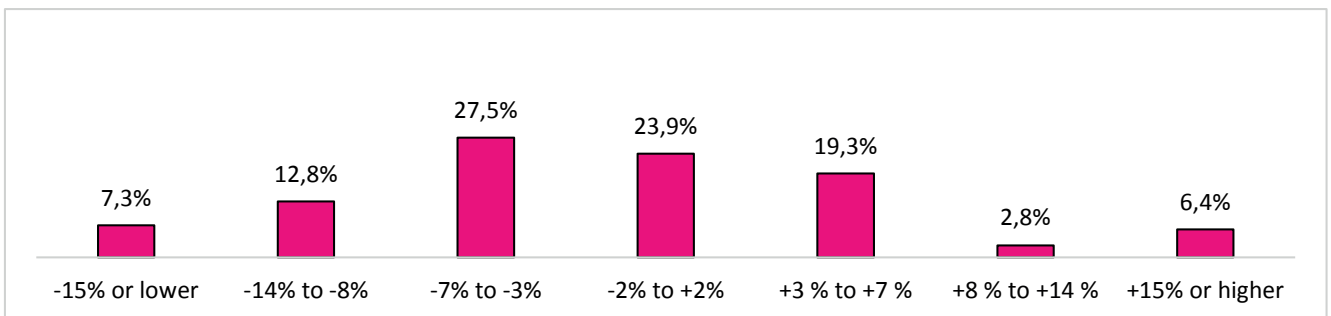
Banks with 50 to 199 employees



Banks with 1 to 49 employees



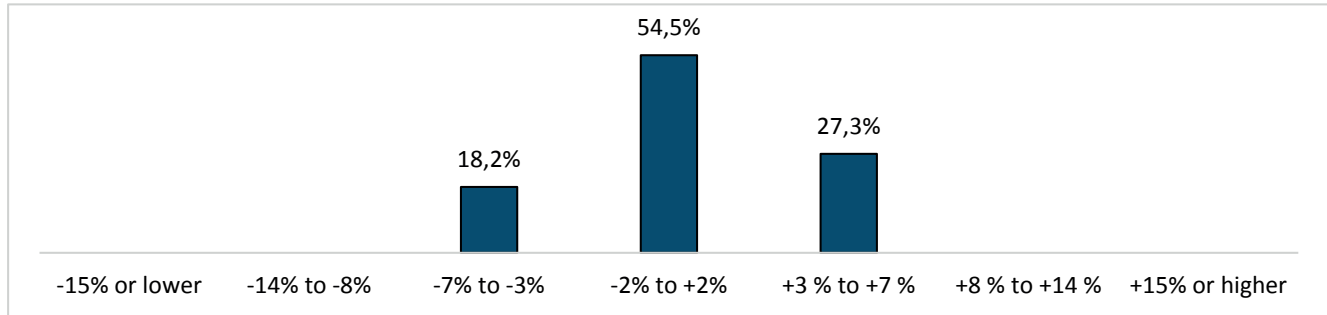
Independent asset managers (all categories)



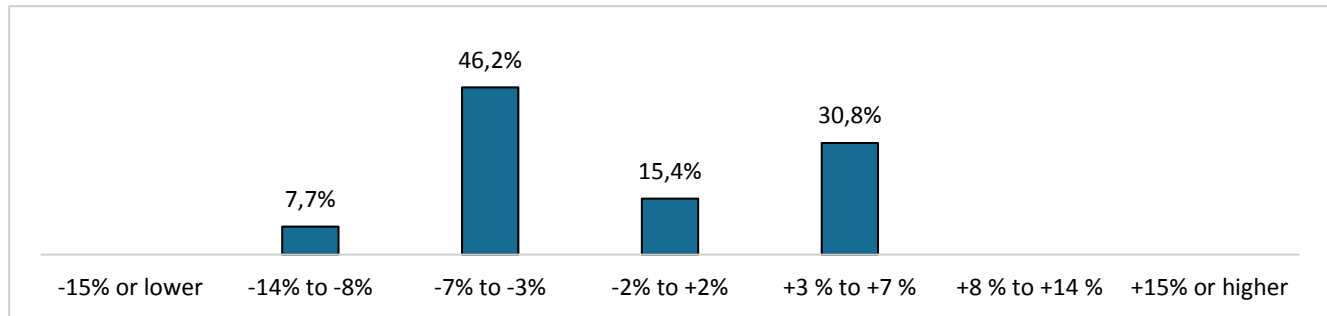
## Outlook for 2015 full year vs. 2014

### 14a. Expected change in labour costs (excluding non-wage costs)

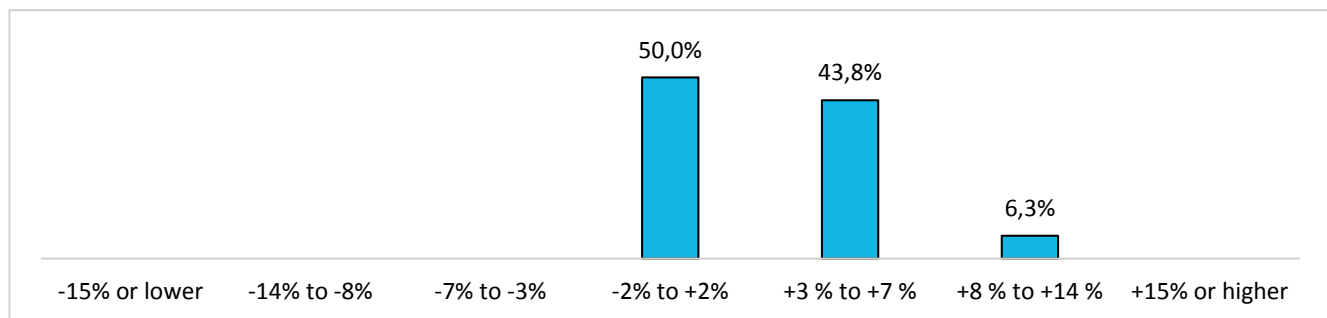
#### Banks with 200 or more employees



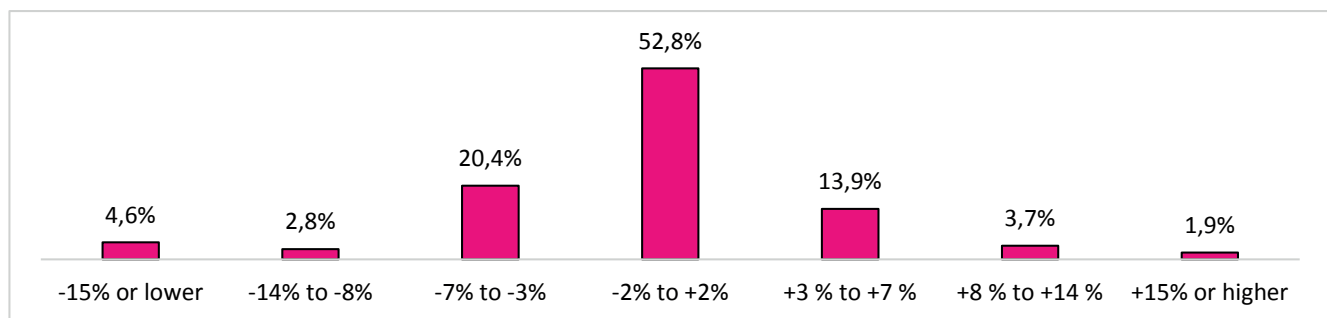
#### Banks with 50 to 199 employees



#### Banks with 1 to 49 employees



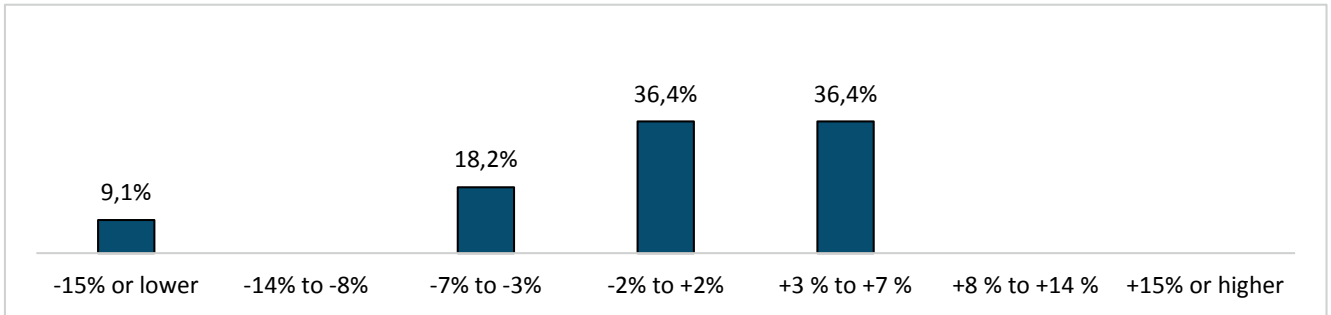
#### Independent asset managers (all categories)



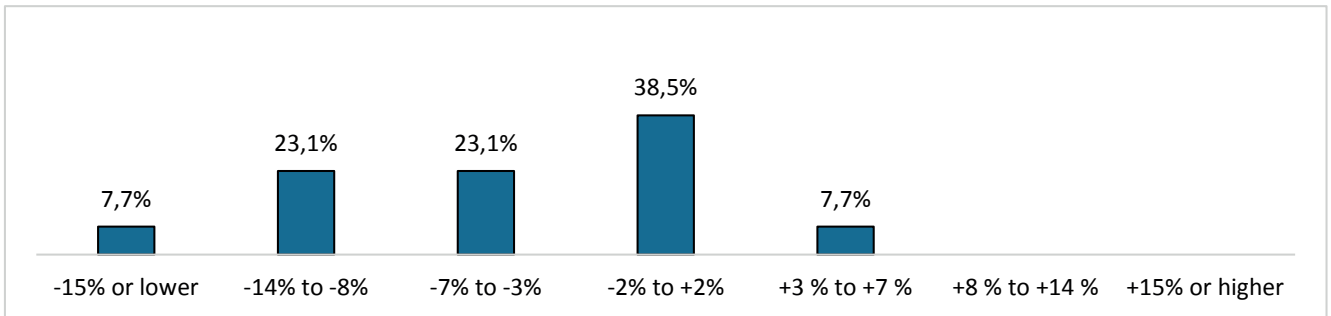
## Outlook for 2015 full year vs. 2014

### 14b. Expected change in non-wage costs

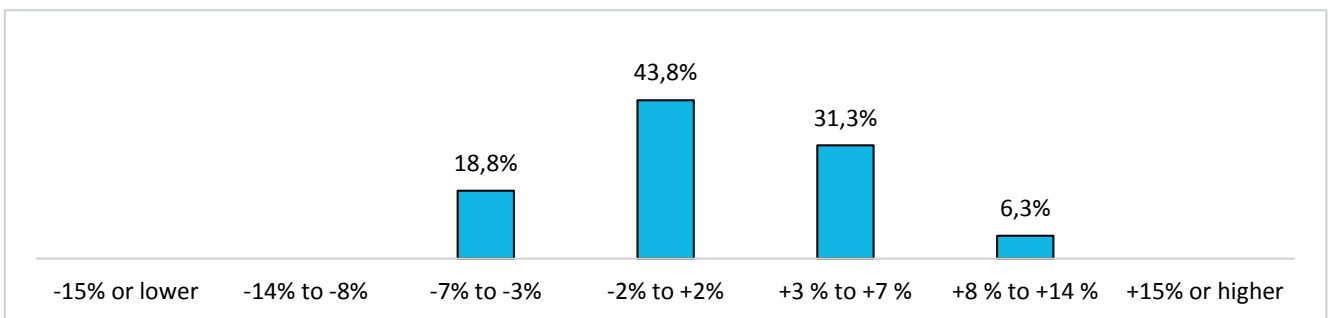
Banks with 200 or more employees



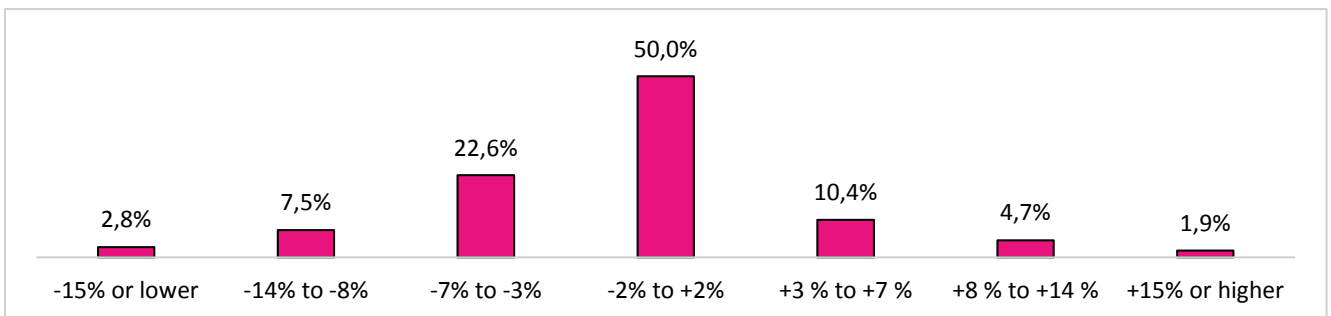
Banks with 50 to 199 employees



Banks with 1 to 49 employees



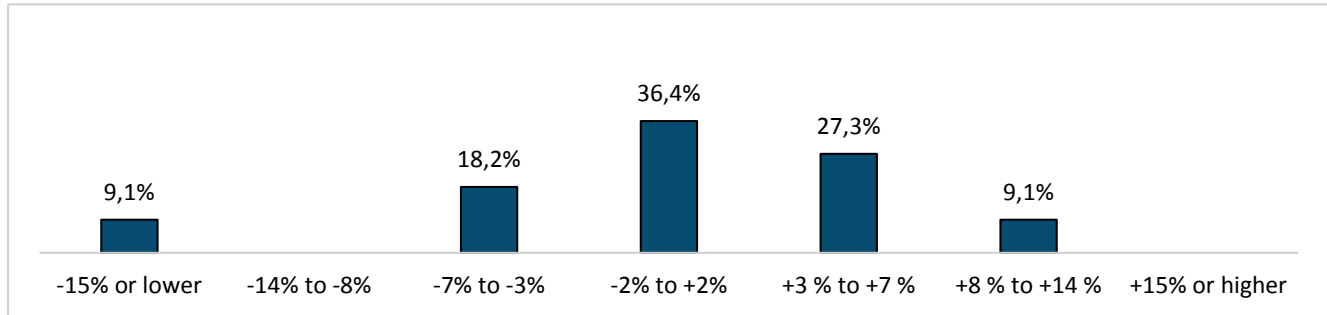
Independent asset managers (all categories)



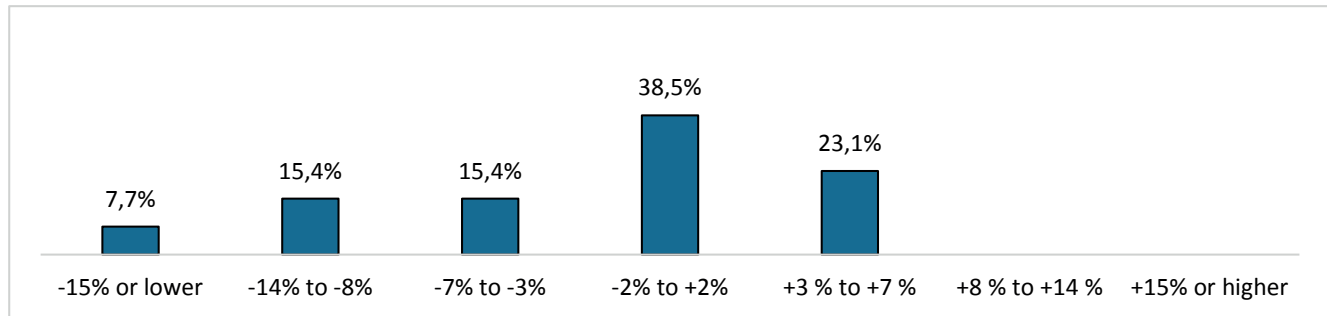
## Outlook for 2015 full year vs. 2014

### 15. Expected change in general expenses (excluding wages)

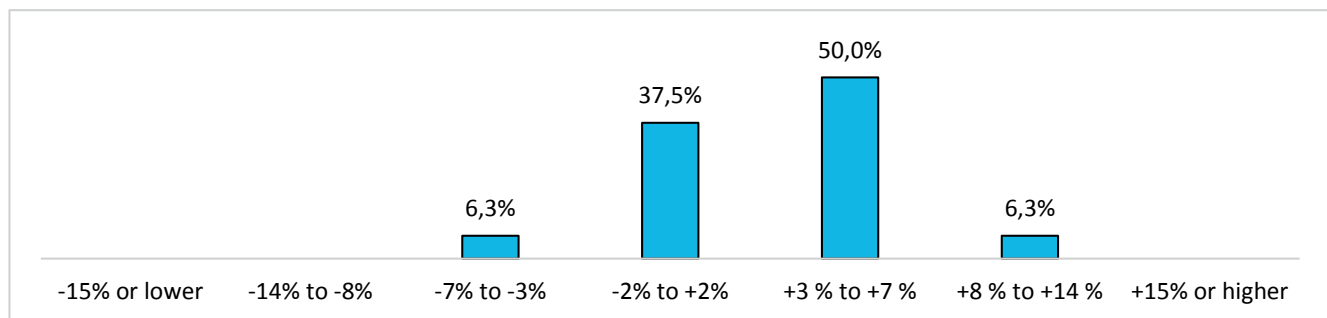
#### Banks with 200 or more employees



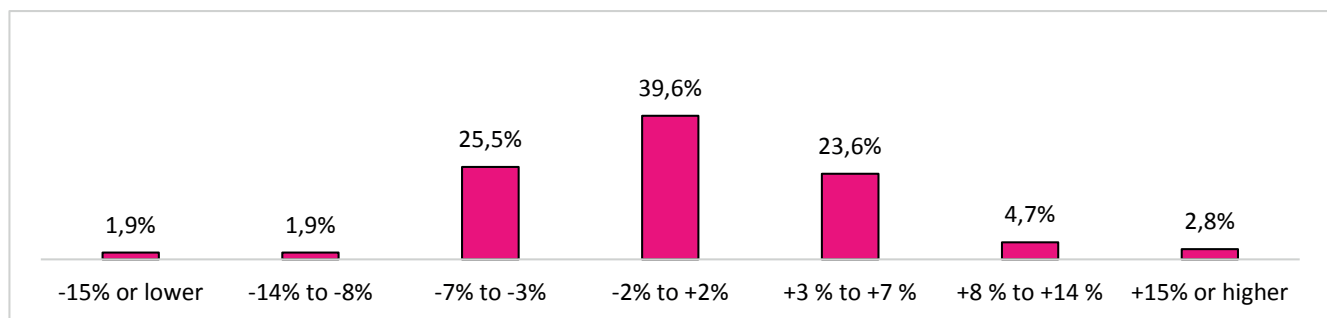
#### Banks with 50 to 199 employees



#### Banks with 1 to 49 employees



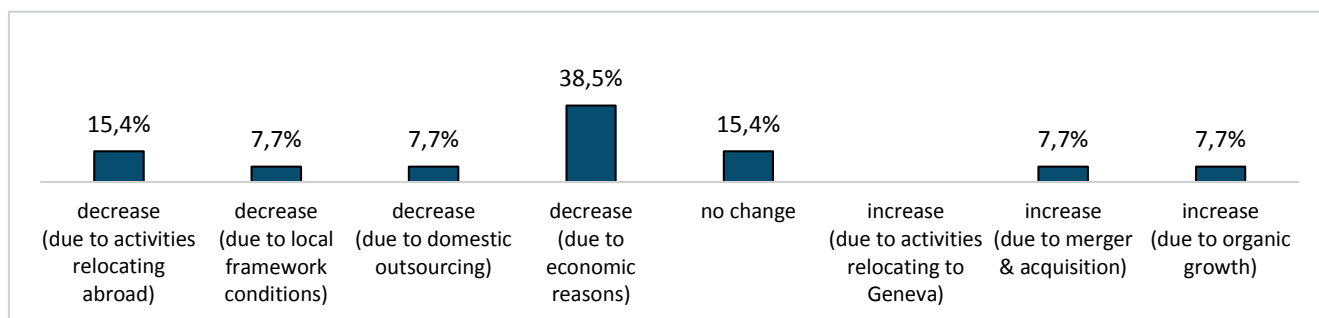
#### Independent asset managers (all categories)



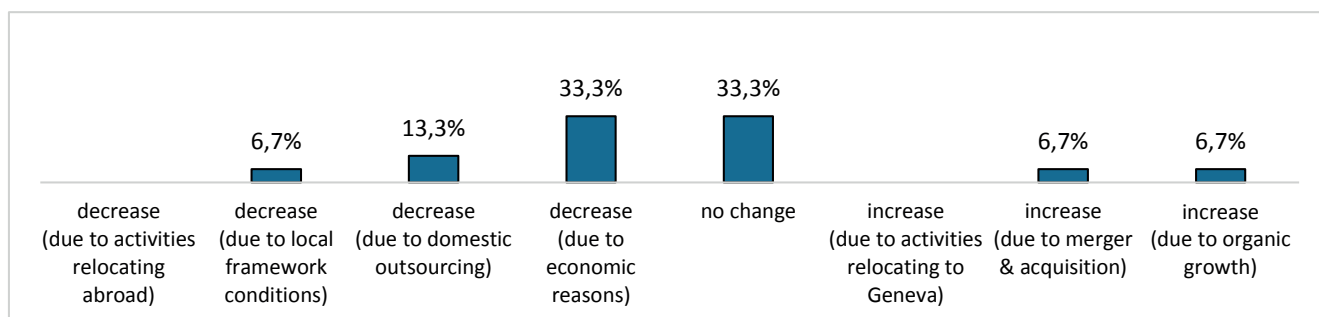
## Outlook for 2015 full year vs. 2014

### 16. Expected change in number of employees

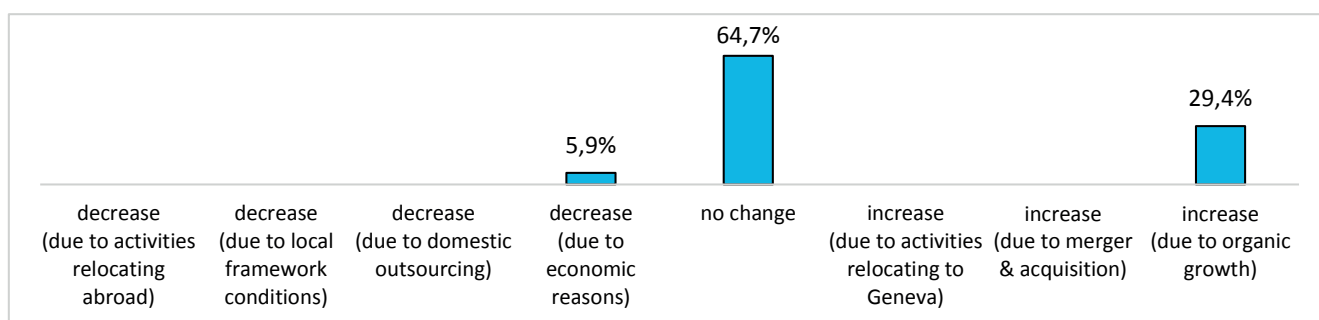
#### Banks with 200 or more employees



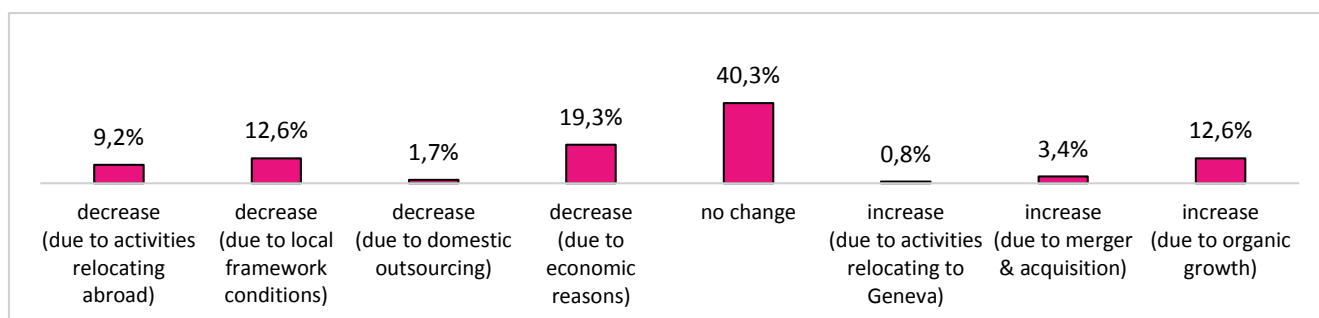
#### Banks with 50 to 199 employees



#### Banks with 1 to 49 employees



#### Independent asset managers (all categories)

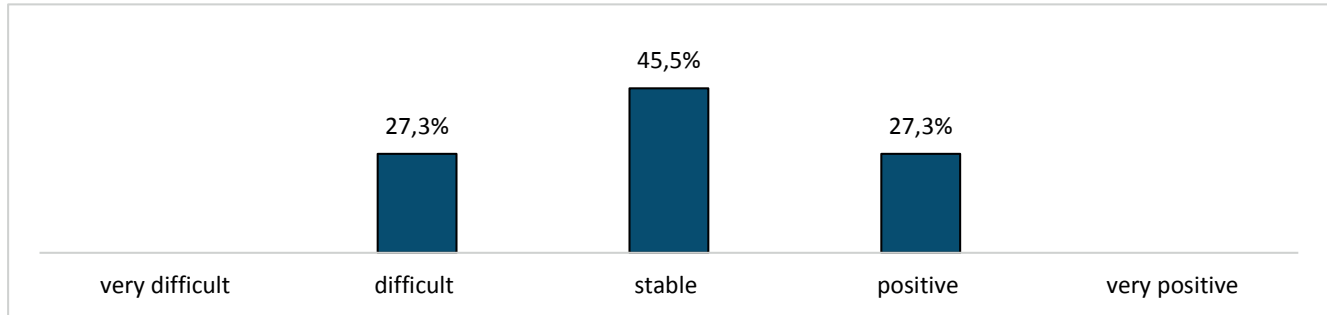




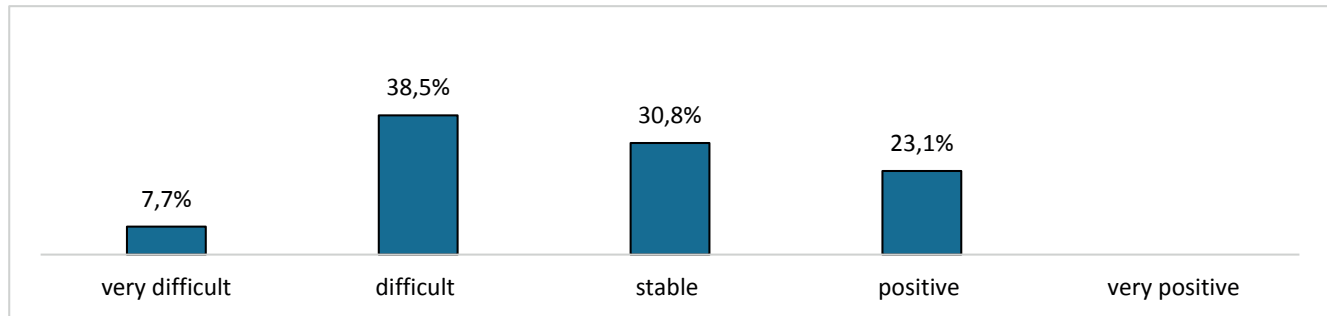
## Outlook for 2015 full year vs. 2014

17. For your company, 2015 overall is likely to be

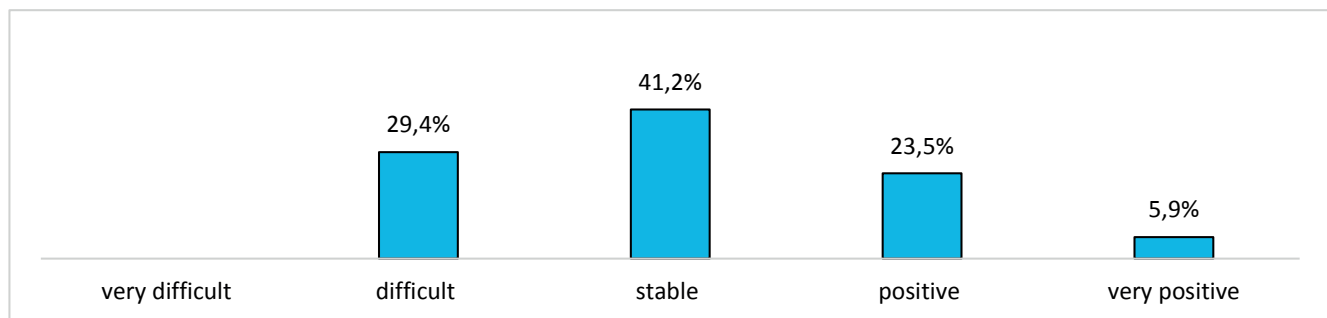
Banks with 200 or more employees



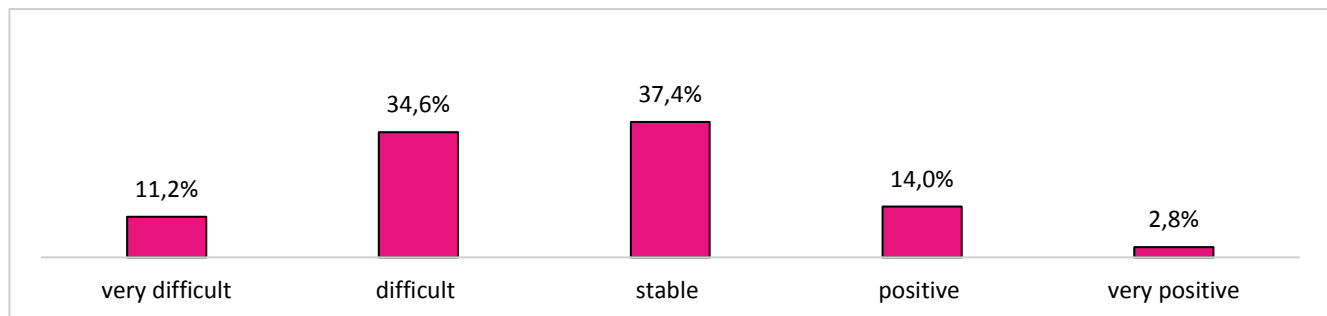
Banks with 50 to 199 employees



Banks with 1 to 49 employees



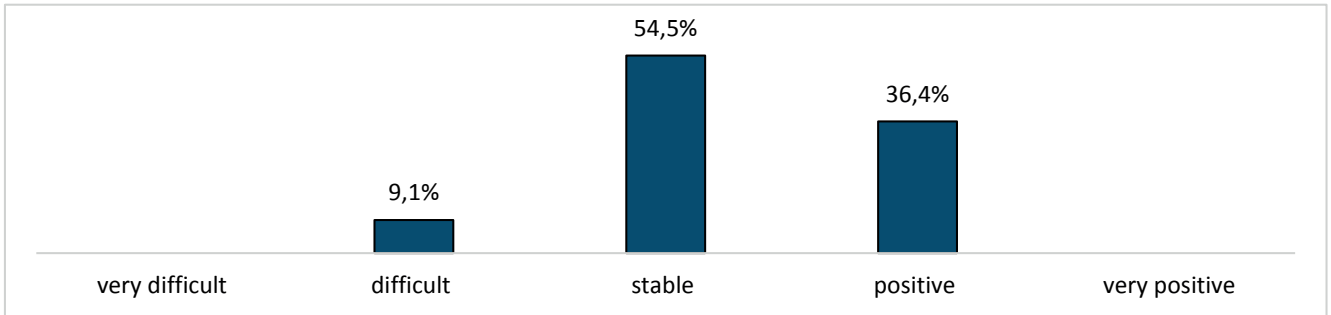
Independent asset managers (all categories)



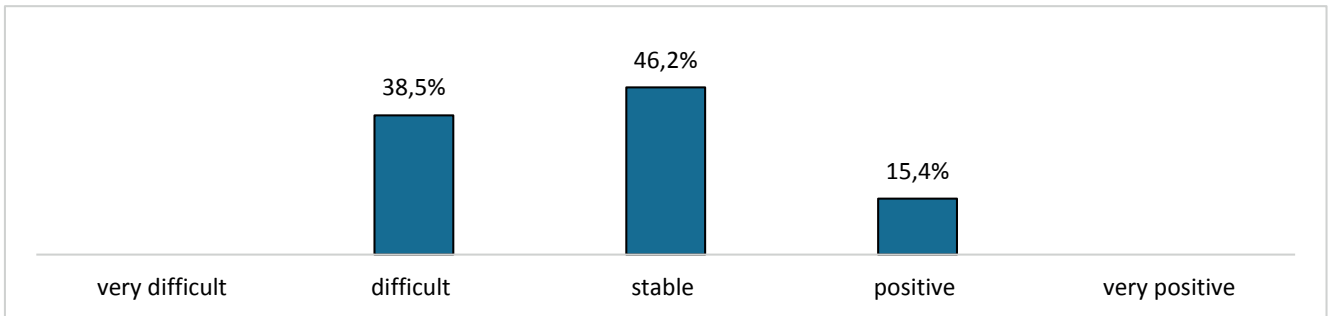
## Outlook for 2016

18. For your company, the year 2016 is likely to be

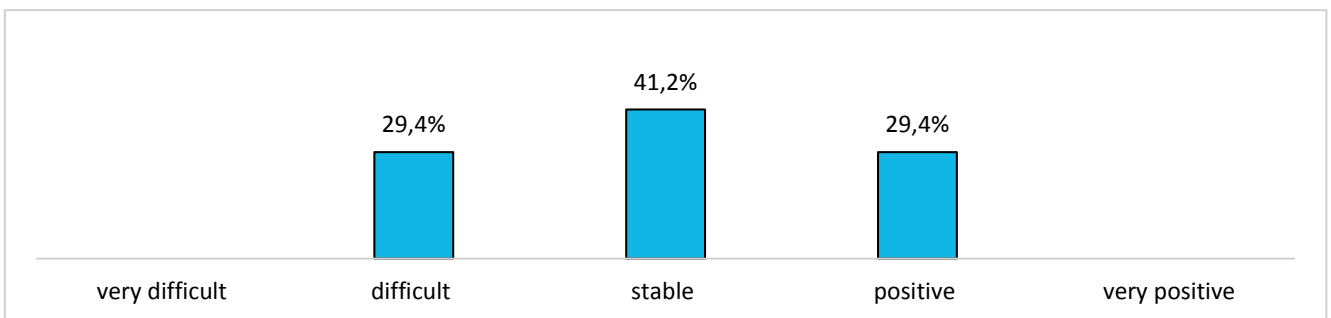
Banks with 200 or more employees



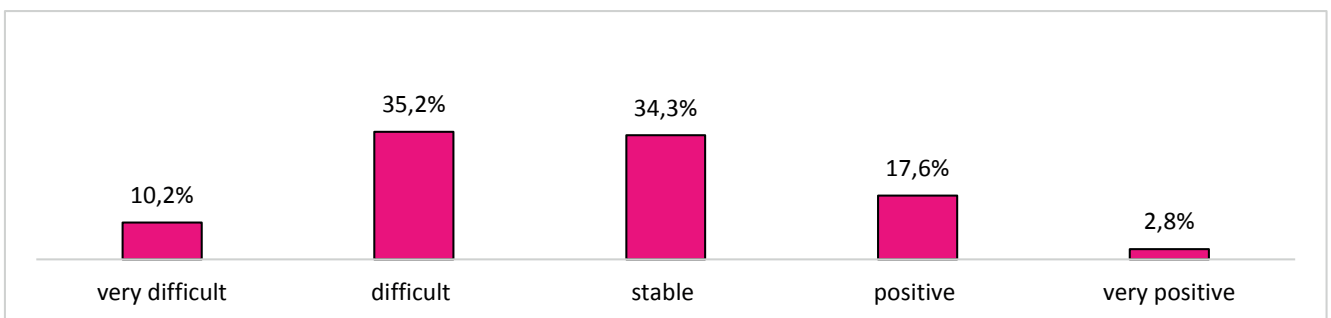
Banks with 50 to 199 employees



Banks with 1 to 49 employees



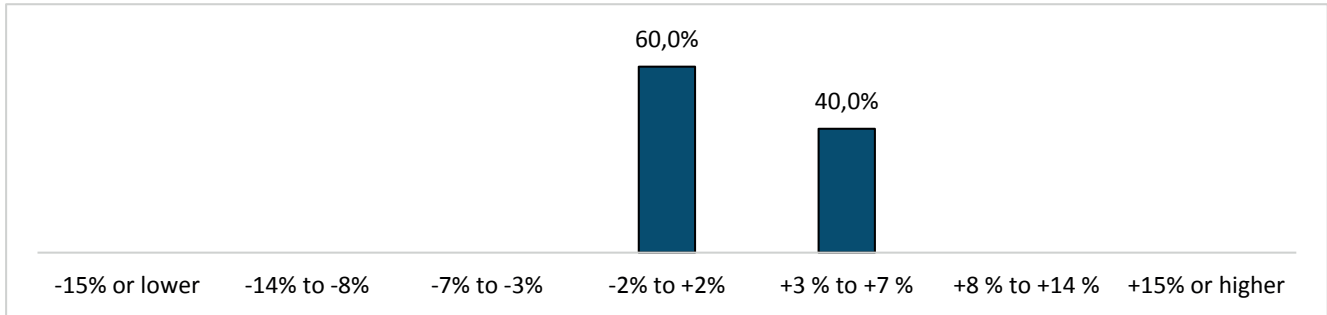
Independent asset managers (all categories)



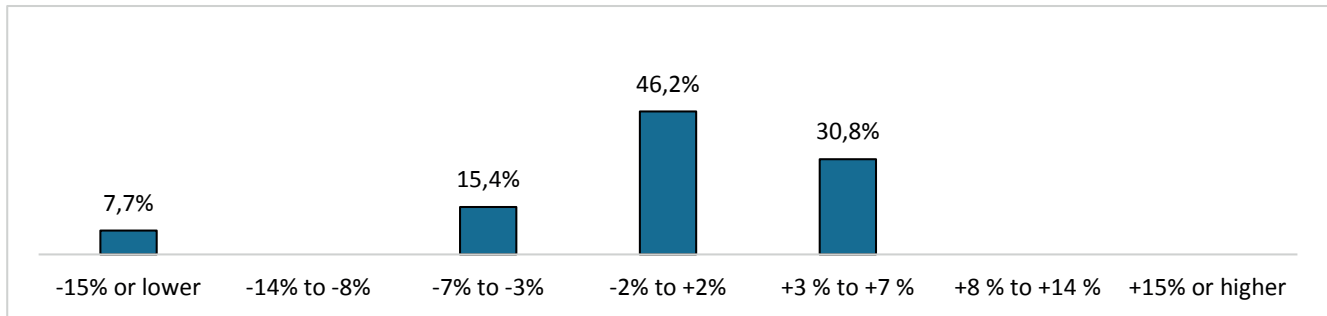
## Outlook for 2016

### 19. Expected change in net profit, 2016 vs. 2015

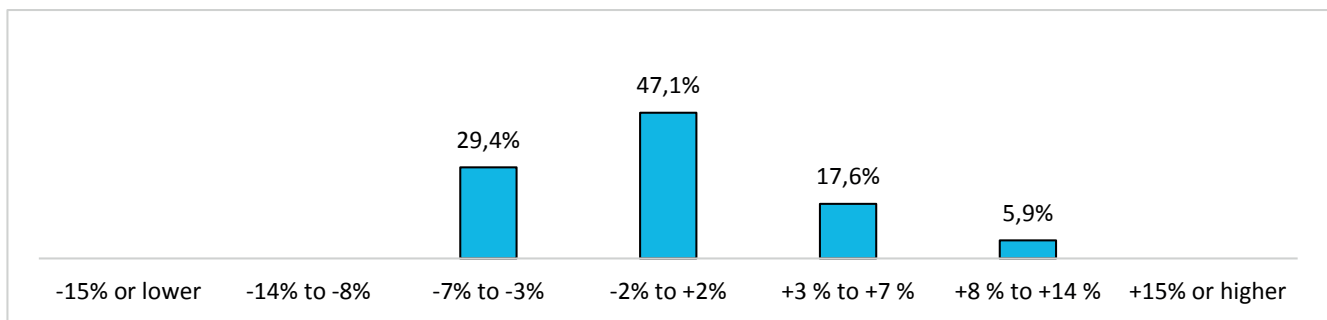
Banks with 200 or more employees



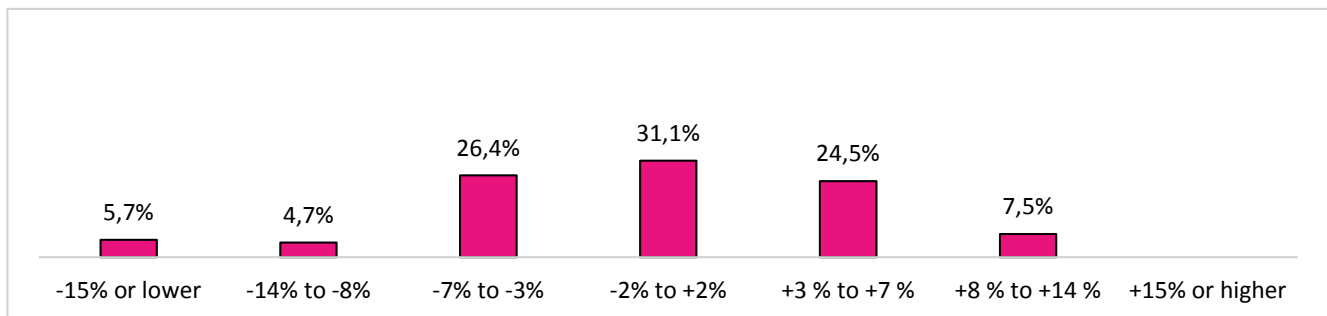
Banks with 50 to 199 employees



Banks with 1 to 49 employees



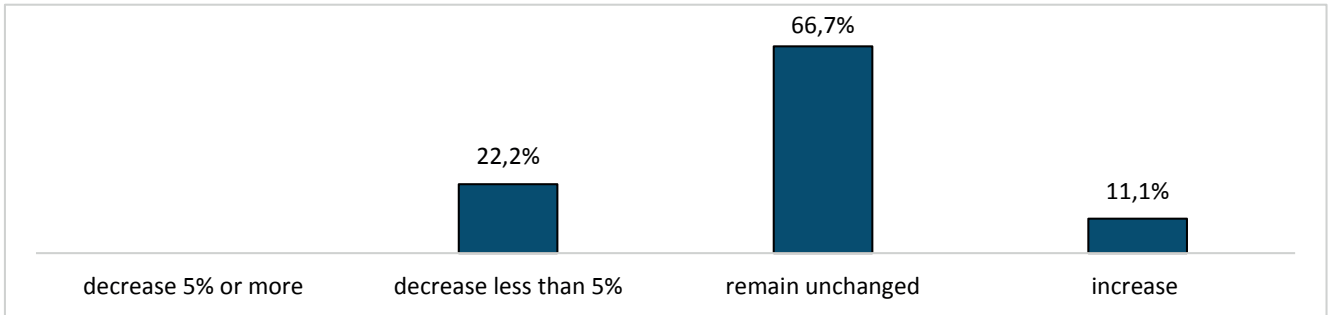
Independent asset managers (all categories)



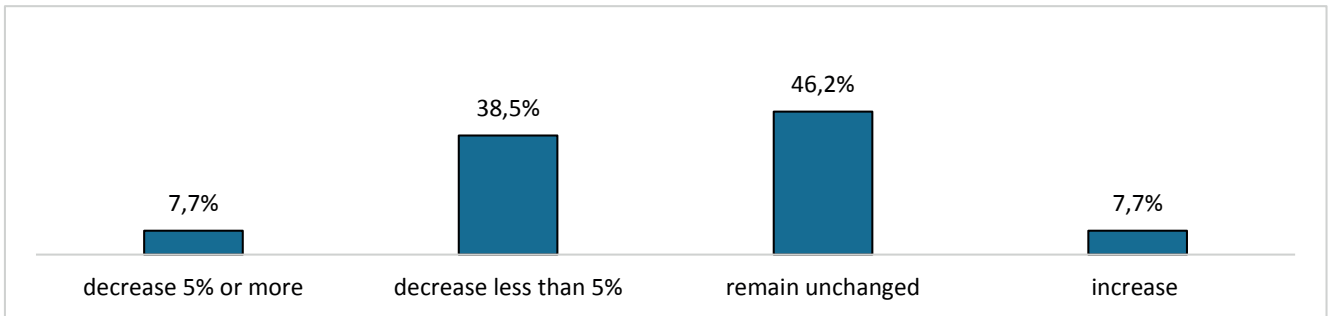
## Outlook for 2016

20. In 2016, you expect the number of employees in Geneva to

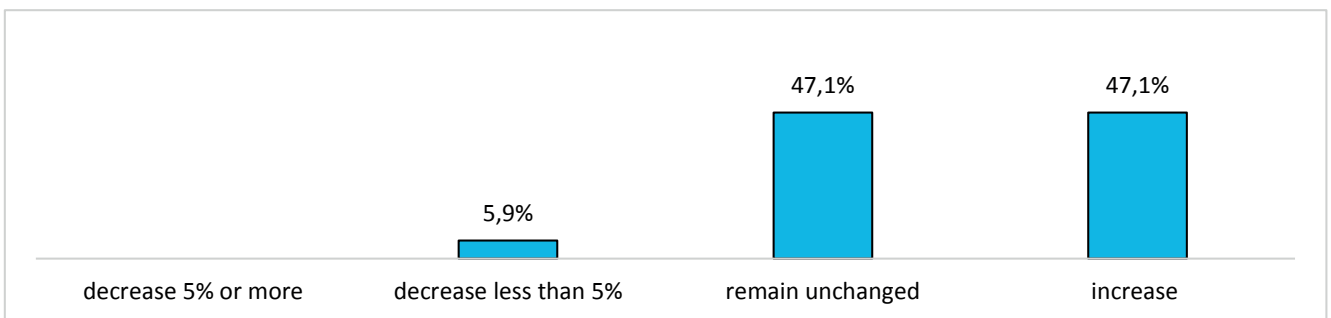
Banks with 200 or more employees



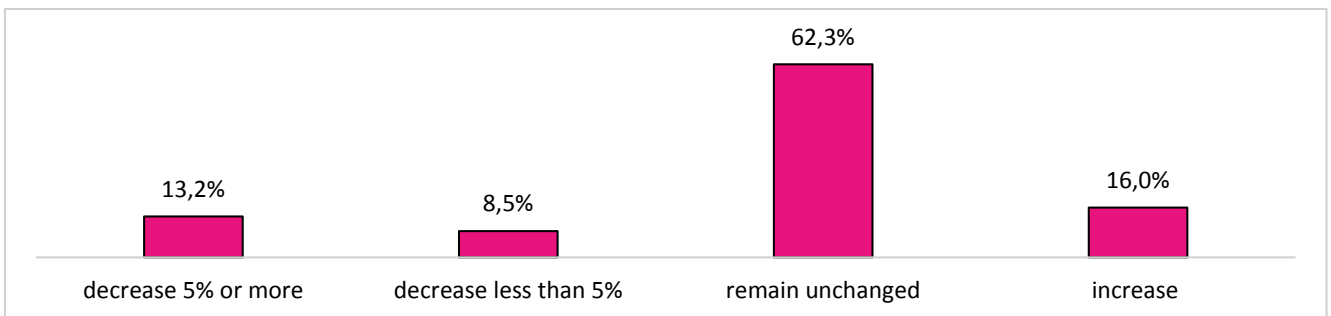
Banks with 50 to 199 employees



Banks with 1 to 49 employees



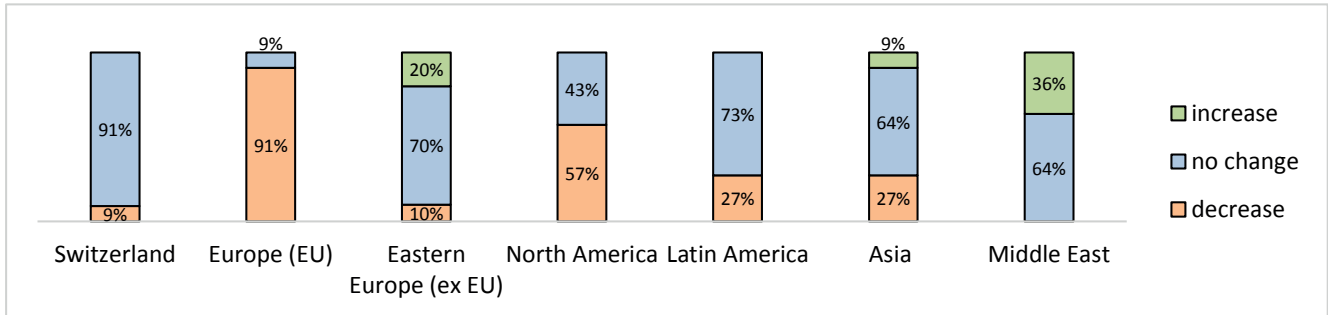
Independent asset managers (all categories)



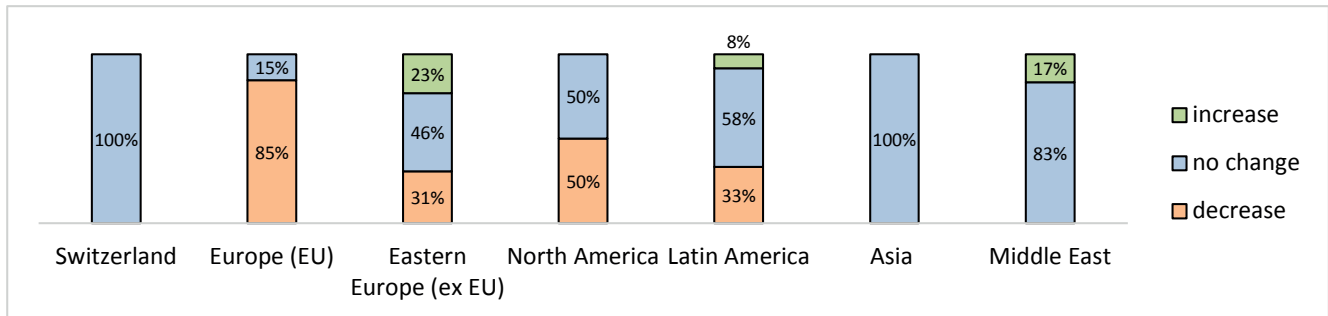
## Framework conditions

21. In 2014, the attractiveness of the Geneva financial center for your clients from

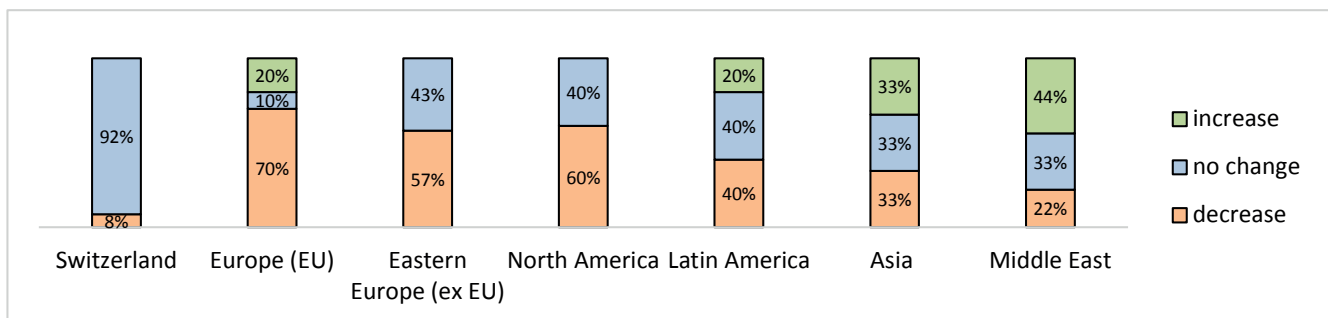
Banks with 200 or more employees



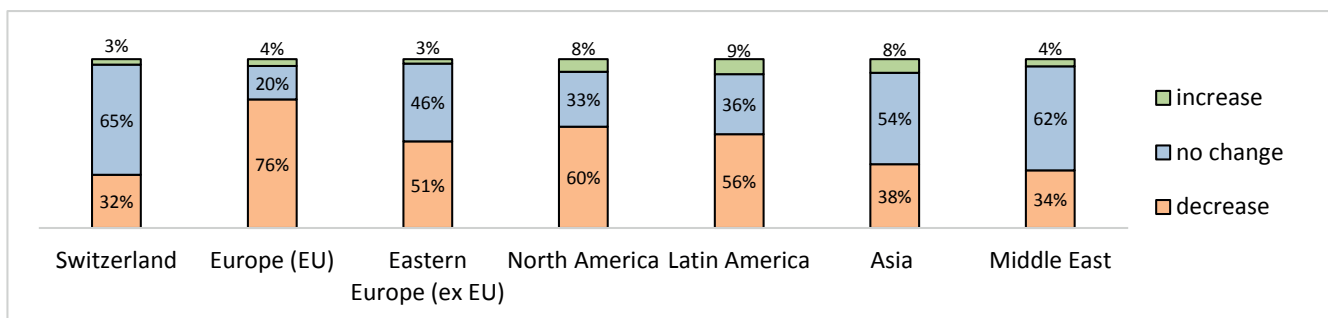
Banks with 50 to 199 employees



Banks with 1 to 49 employees



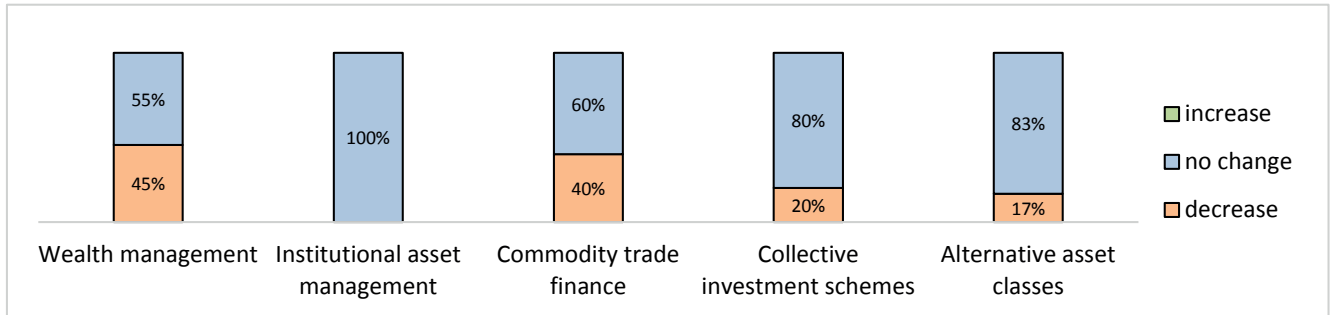
Independent asset managers (all categories)



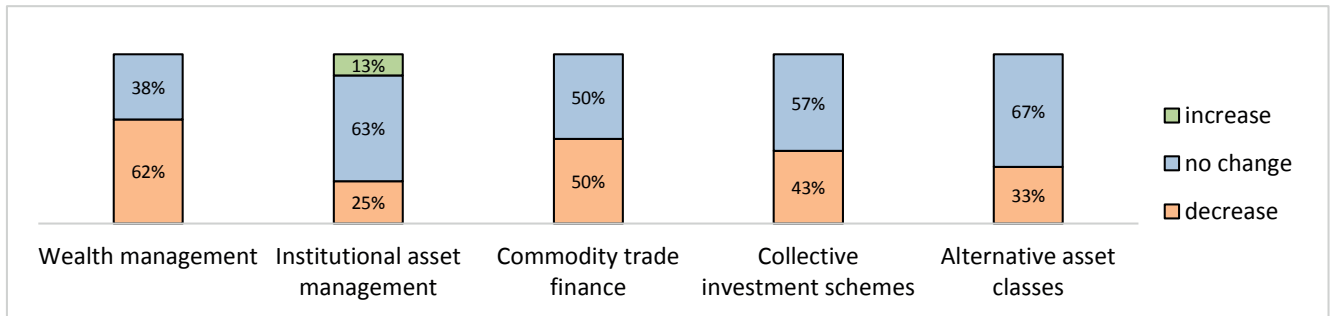
## Framework conditions

22. In 2014, the attractiveness of the Geneva financial center for the following activities

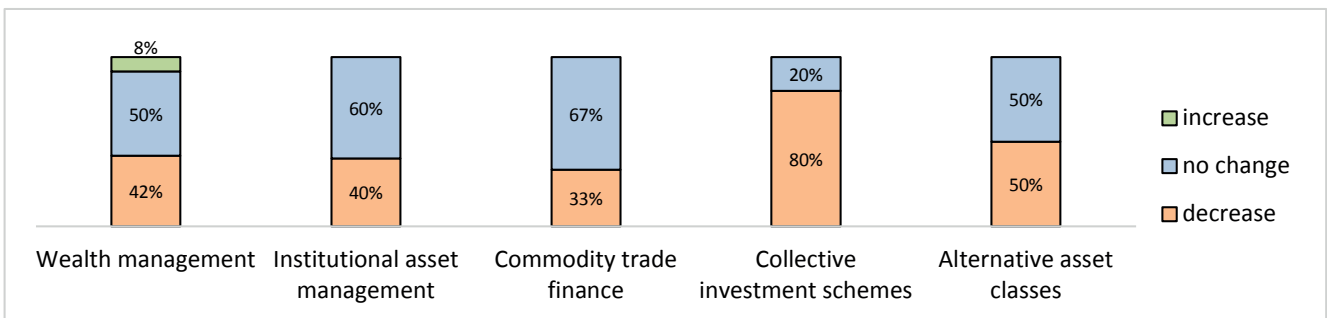
Banks with 200 or more employees



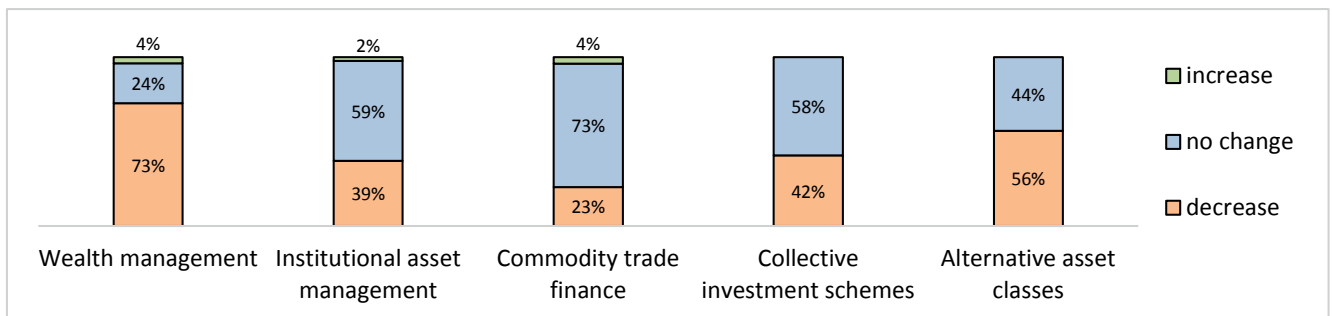
Banks with 50 to 199 employees



Banks with 1 to 49 employees



Independent asset managers (all categories)

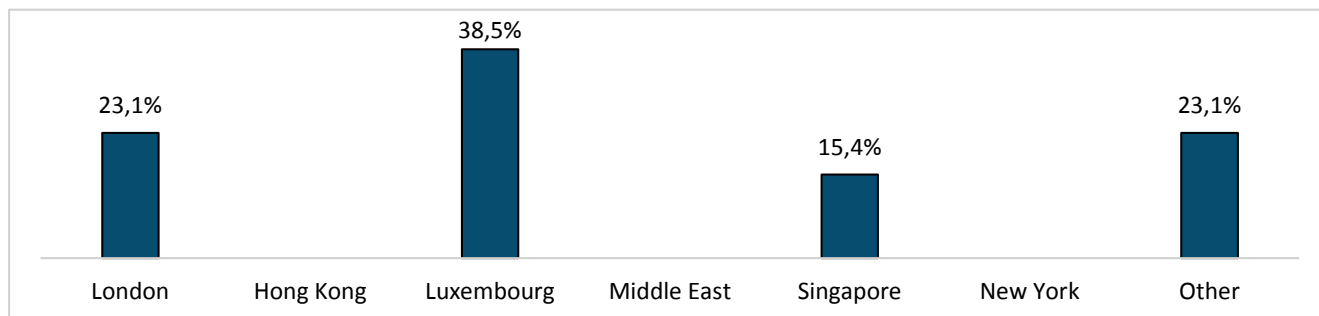


## Framework conditions

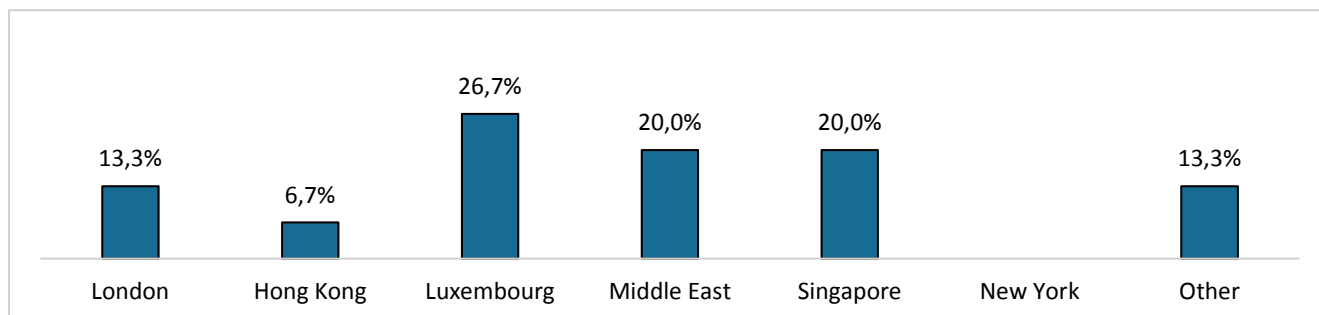
23. If you relocated activities away from Geneva, which of the following financial centers would you consider moving to?

(max. 2 answers)

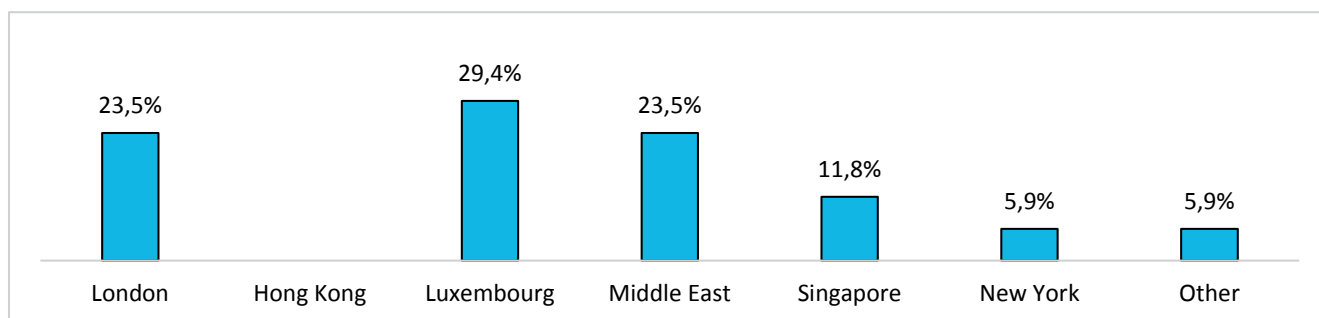
Banks with 200 or more employees



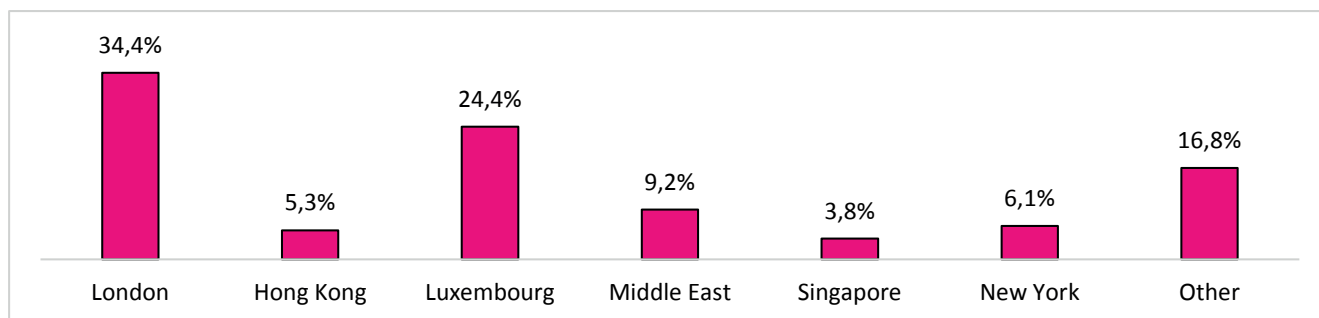
Banks with 50 to 199 employees



Banks with 1 to 49 employees



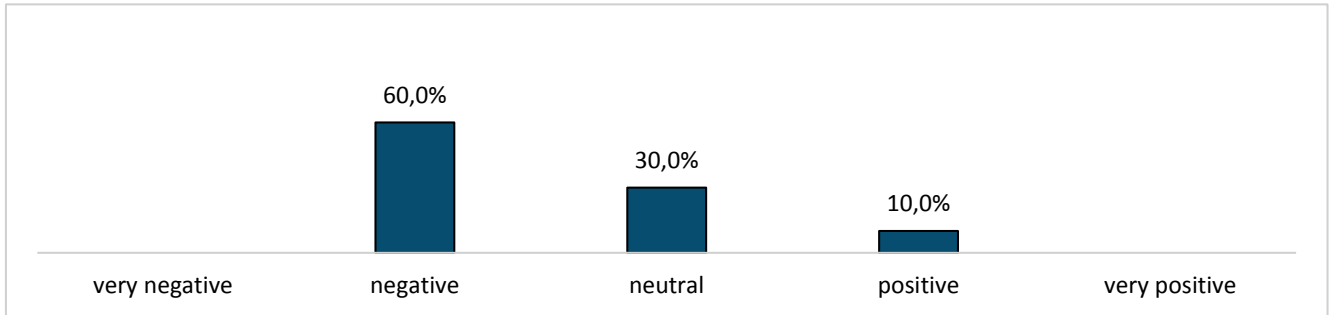
Independent asset managers (all categories)



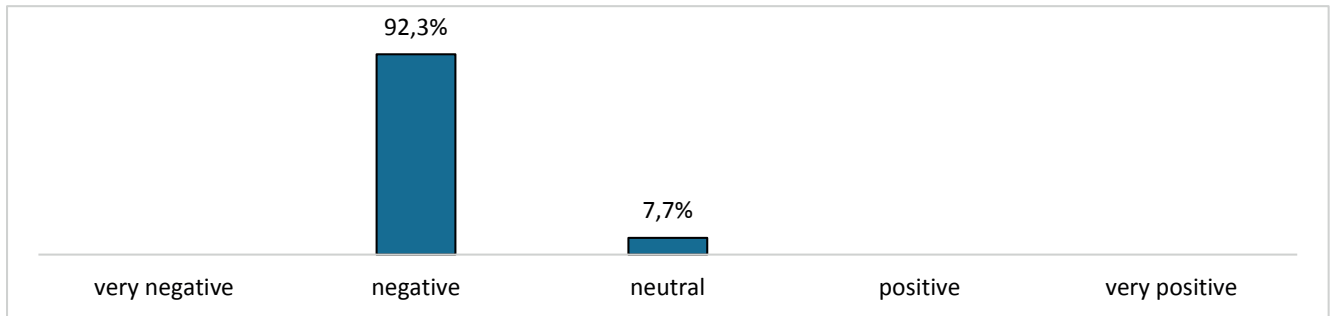
## Framework conditions

24. What impact do you expect the new standard for automatic exchange of information to have on your company?

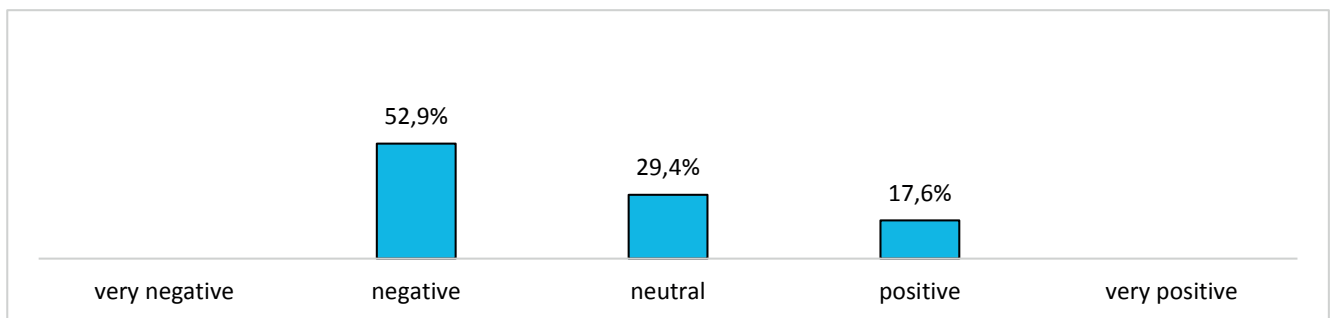
Banks with 200 or more employees



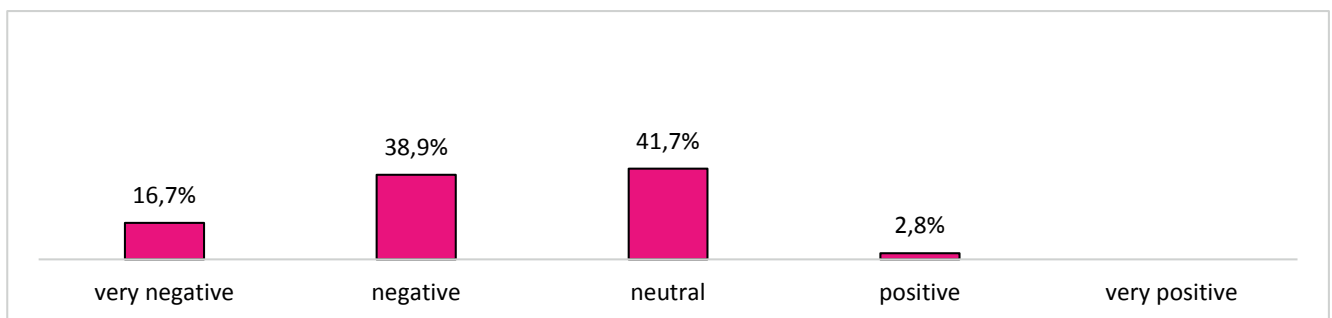
Banks with 50 to 199 employees



Banks with 1 to 49 employees



Independent asset managers (all categories)

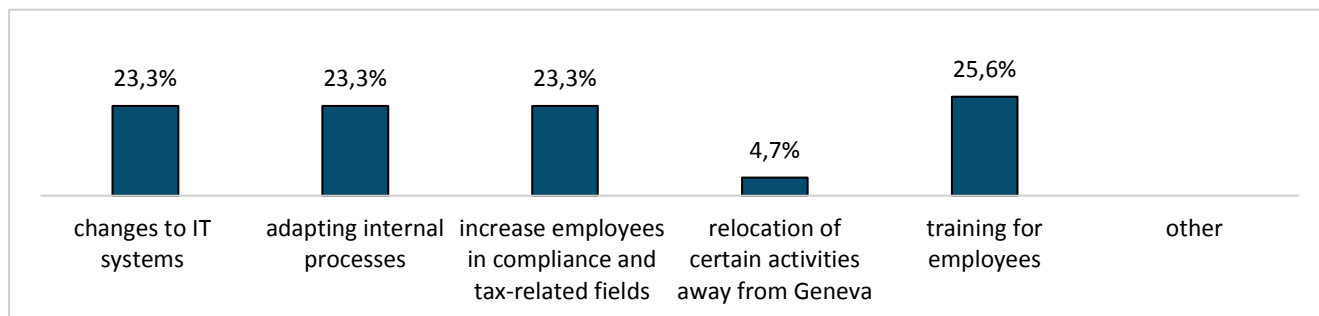




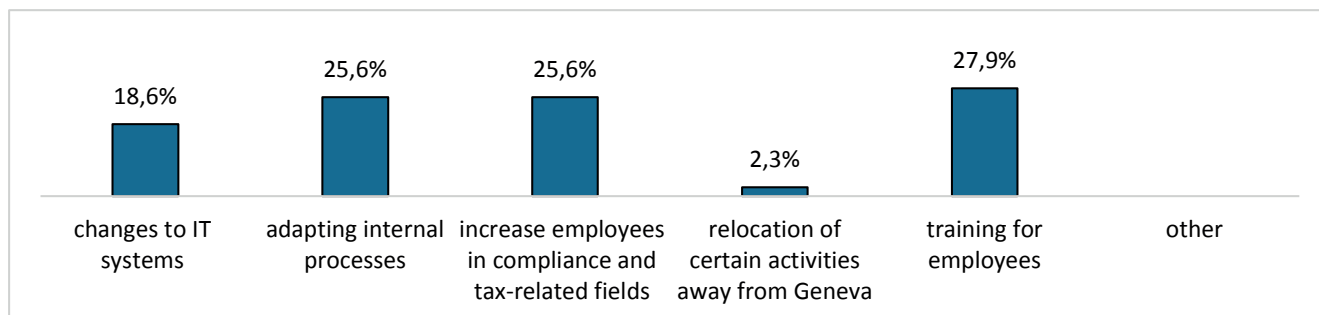
## Framework conditions

25. What practical consequences would automatic exchange of information have on your company?  
(more than one answer possible)

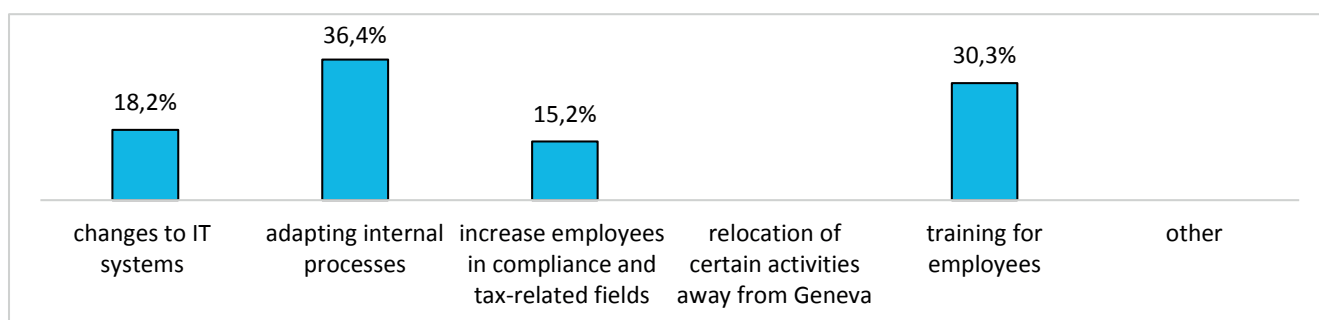
Banks with 200 or more employees



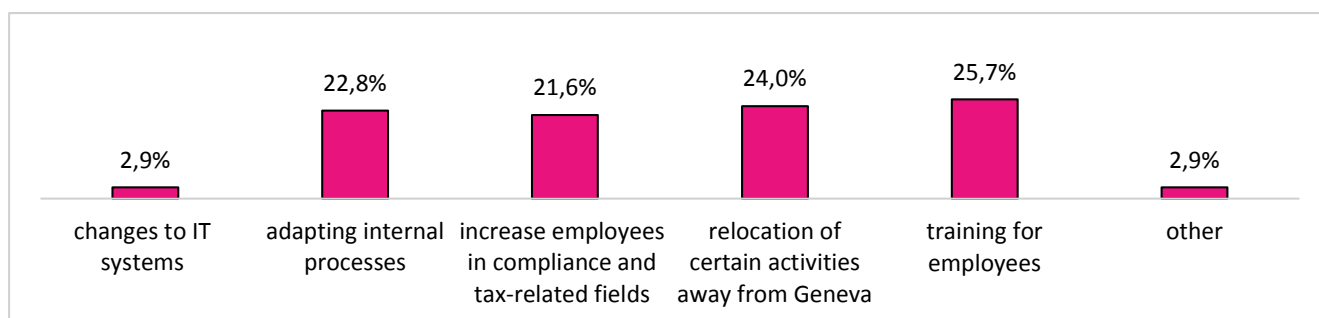
Banks with 50 to 199 employees



Banks with 1 to 49 employees



Independent asset managers (all categories)

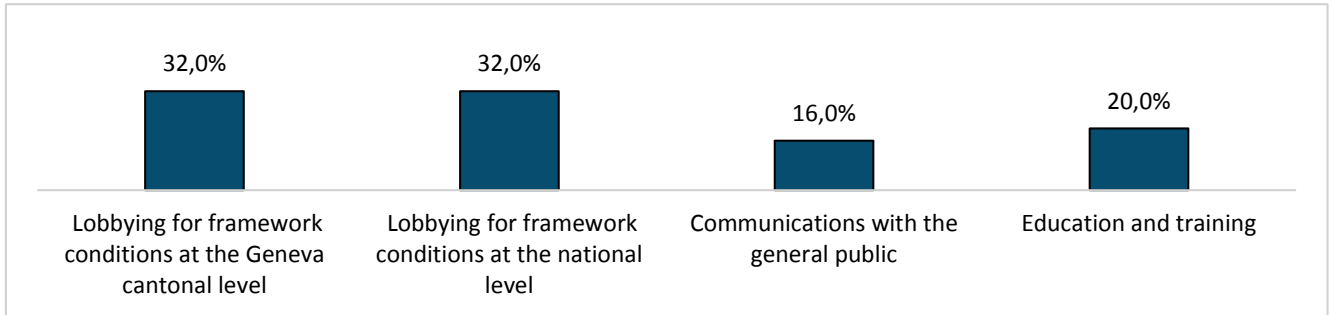


## Framework conditions

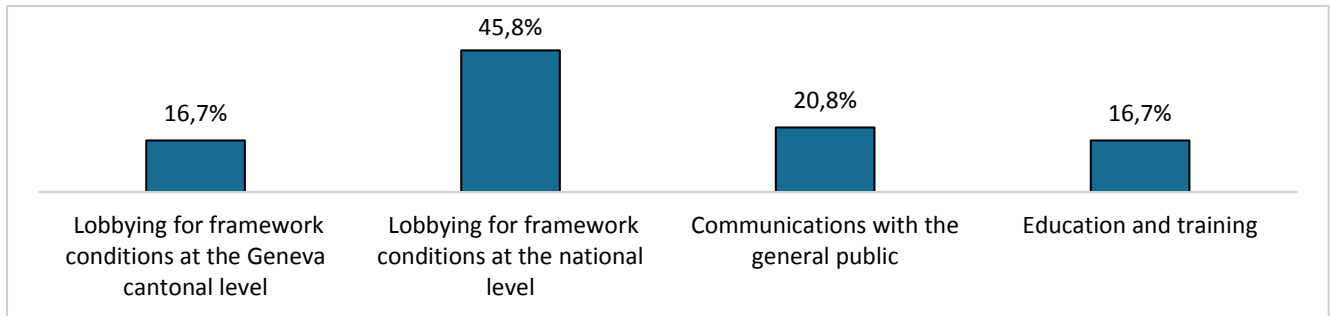
26. In your opinion, which of the following areas for action should the Geneva Financial Center prioritize?

(more than one answer possible)

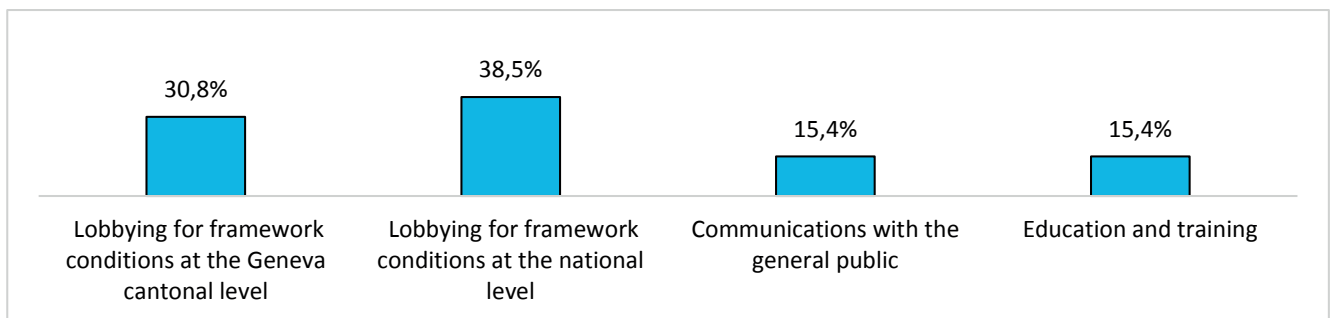
Banks with 200 or more employees



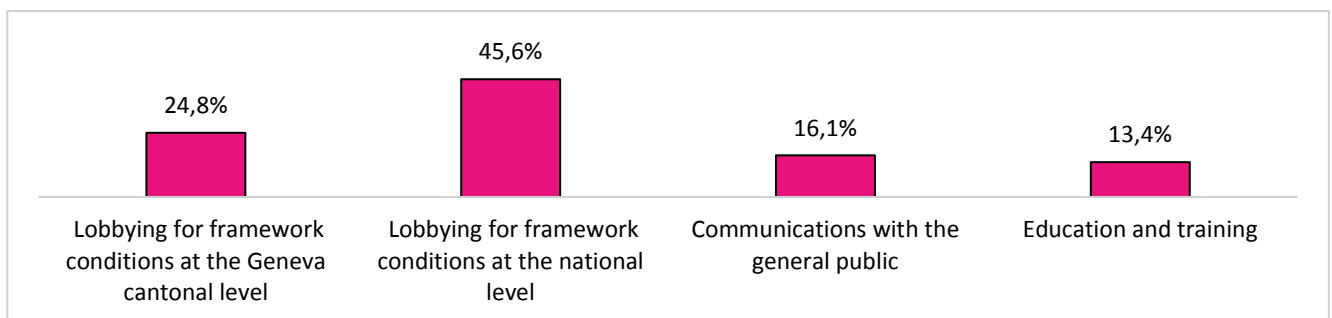
Banks with 50 to 199 employees



Banks with 1 to 49 employees



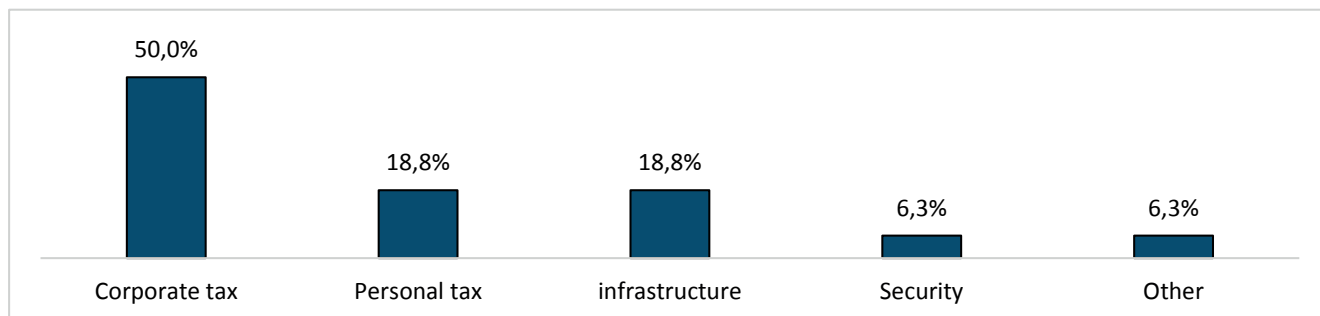
Independent asset managers (all categories)



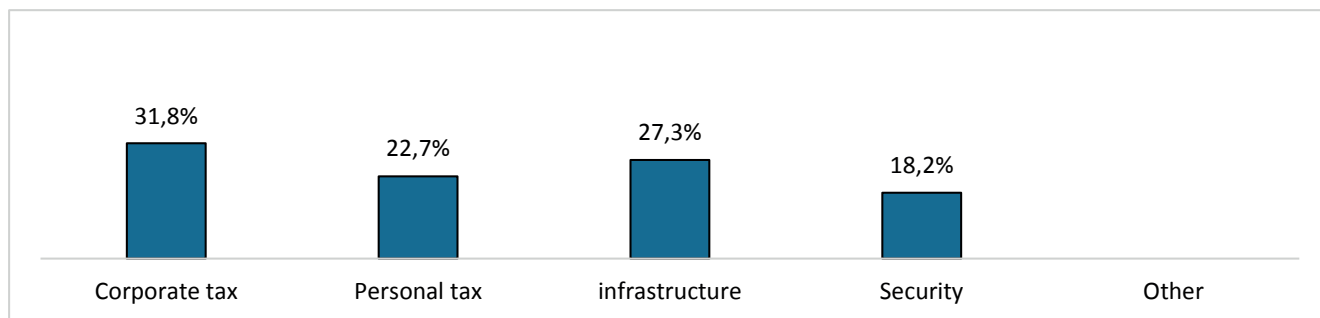
## Framework conditions

### 27. Areas to prioritize at the Geneva cantonal level (more than one answer possible)

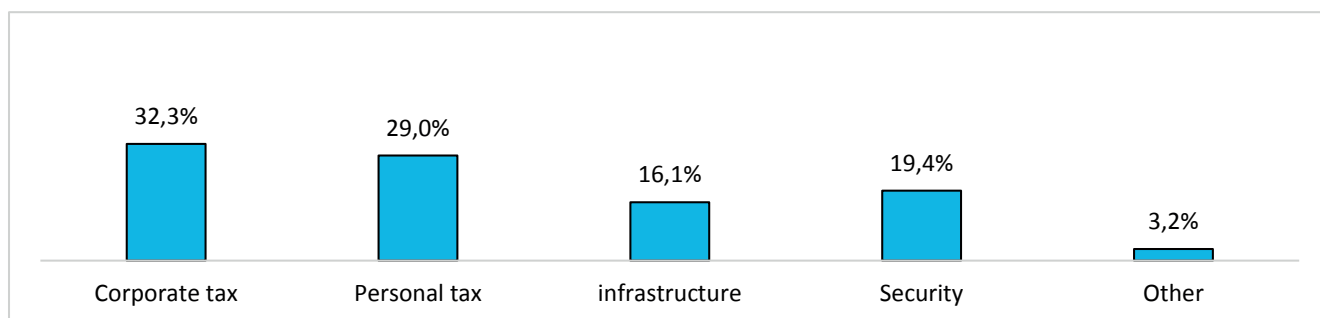
Banks with 200 or more employees



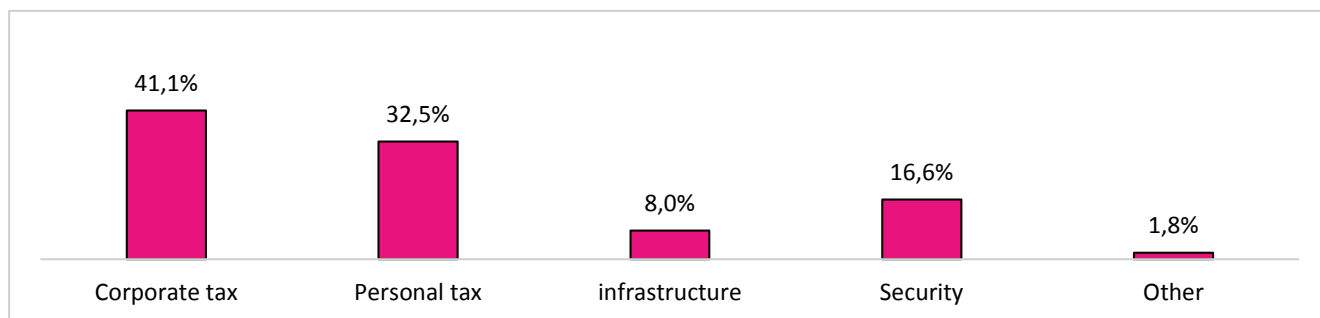
Banks with 50 to 199 employees



Banks with 1 to 49 employees



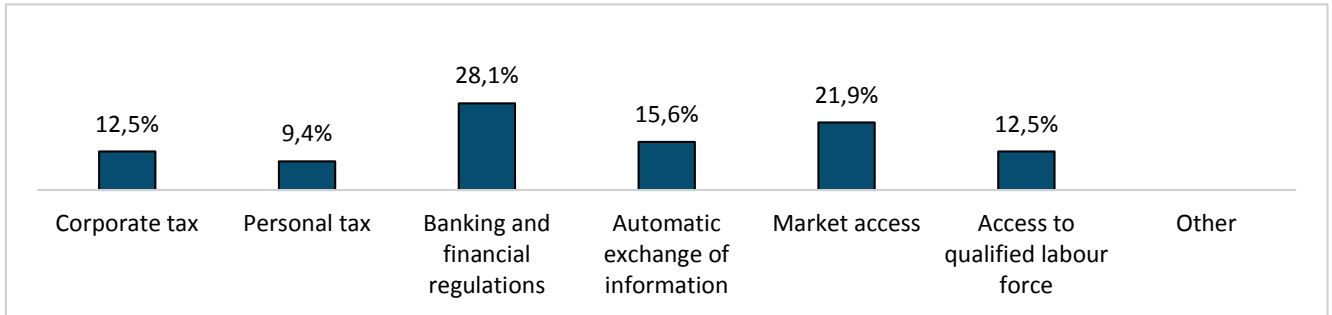
Independent asset managers (all categories)



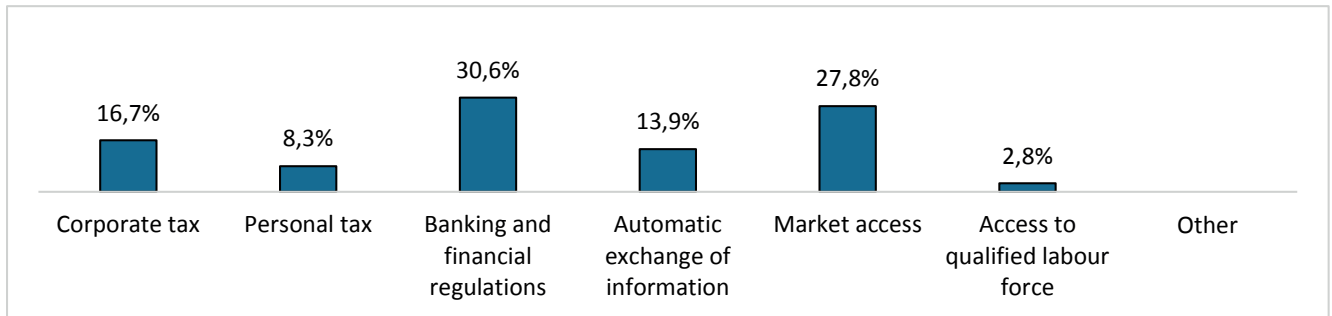
## Framework conditions

### 28. Areas to prioritize at the national level (more than one answer possible)

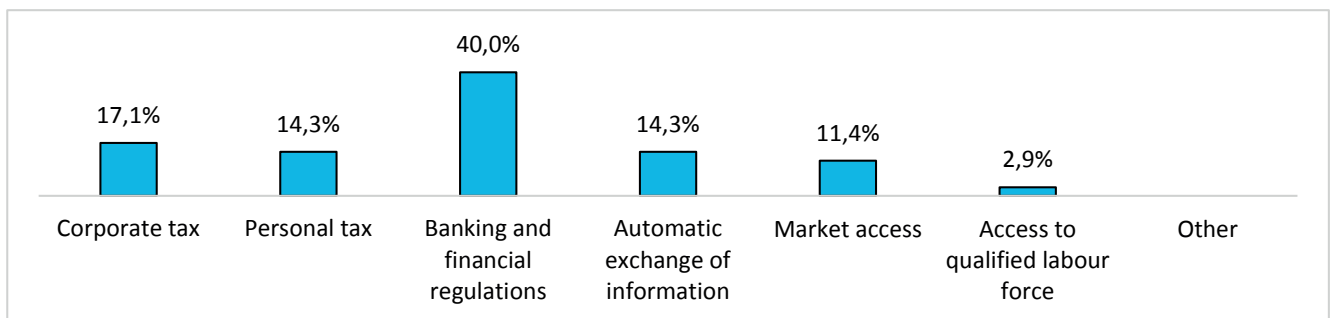
Banks with 200 or more employees



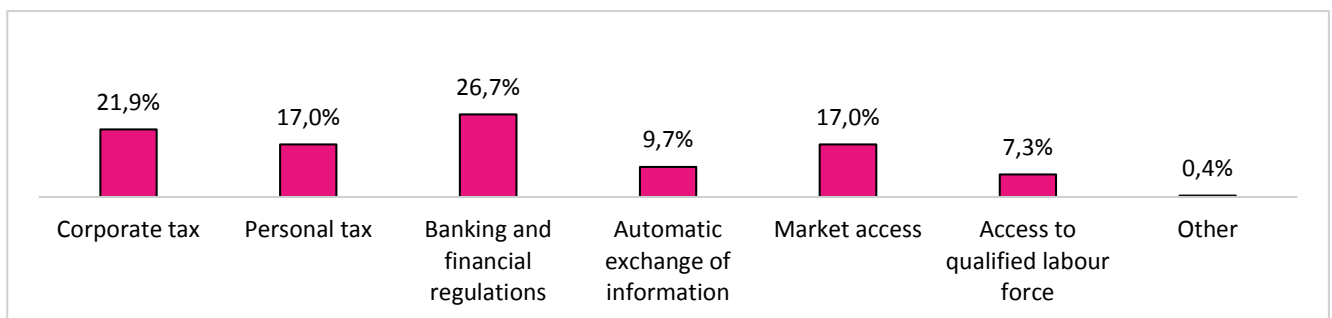
Banks with 50 to 199 employees



Banks with 1 to 49 employees



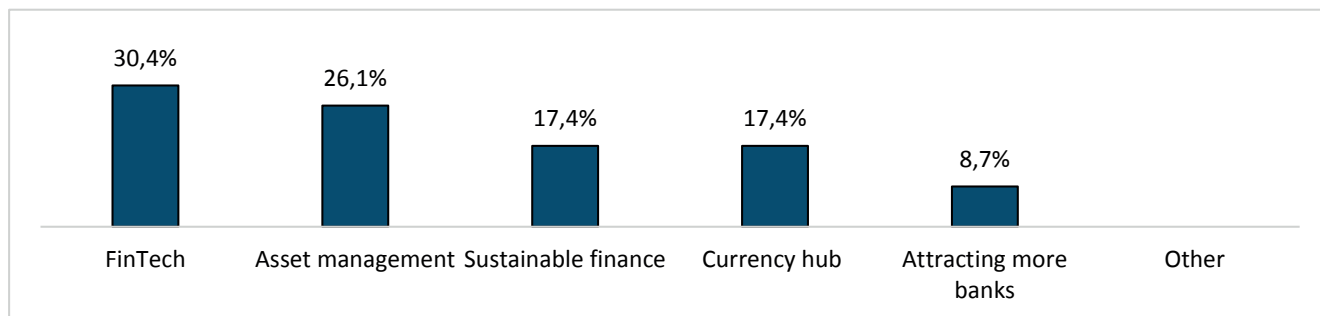
Independent asset managers (all categories)



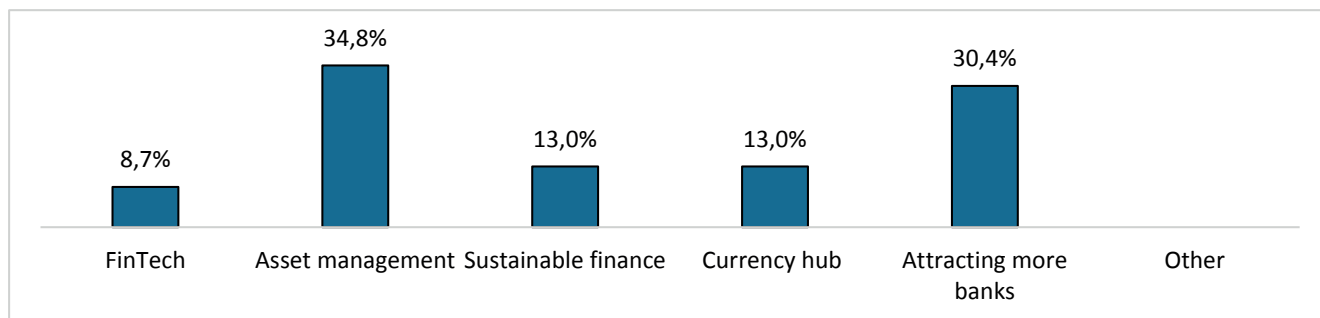
## Framework conditions

29. Which others areas for action should the Geneva Financial Center also prioritize?  
(more than one answer possible)

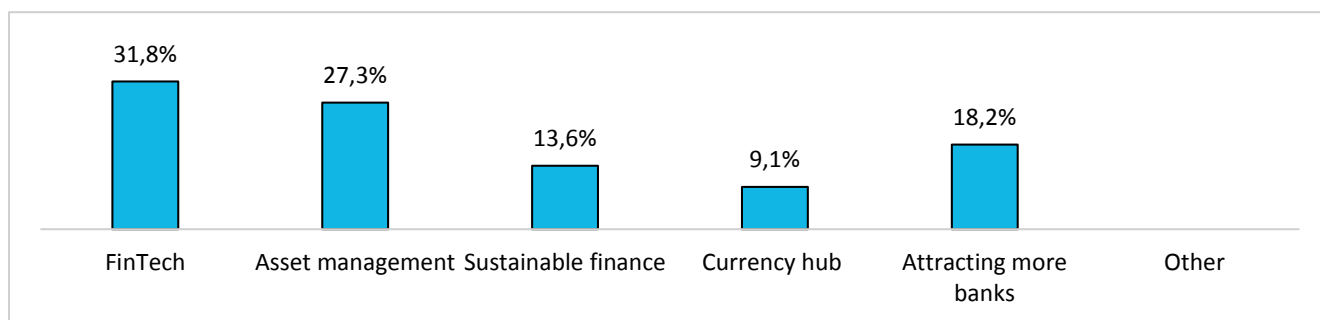
Banks with 200 or more employees



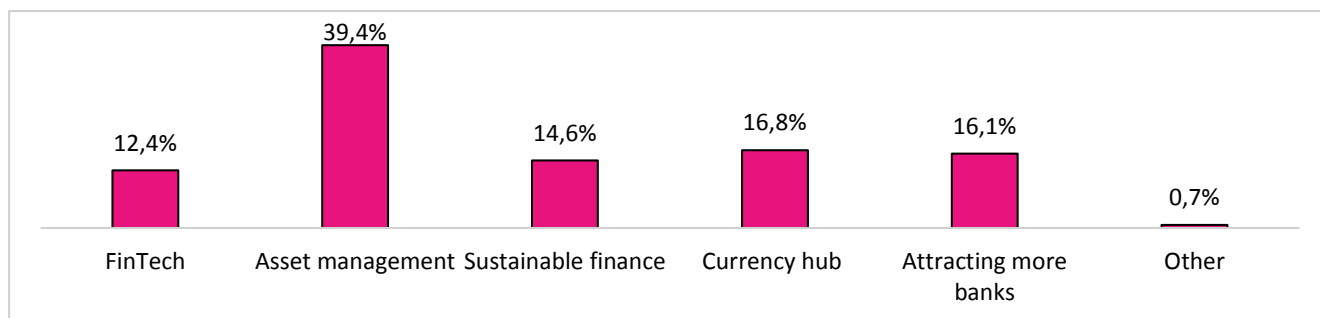
Banks with 50 to 199 employees



Banks with 1 to 49 employees



Independent asset managers (all categories)





## **Imprint**

Edition : Geneva Financial Center

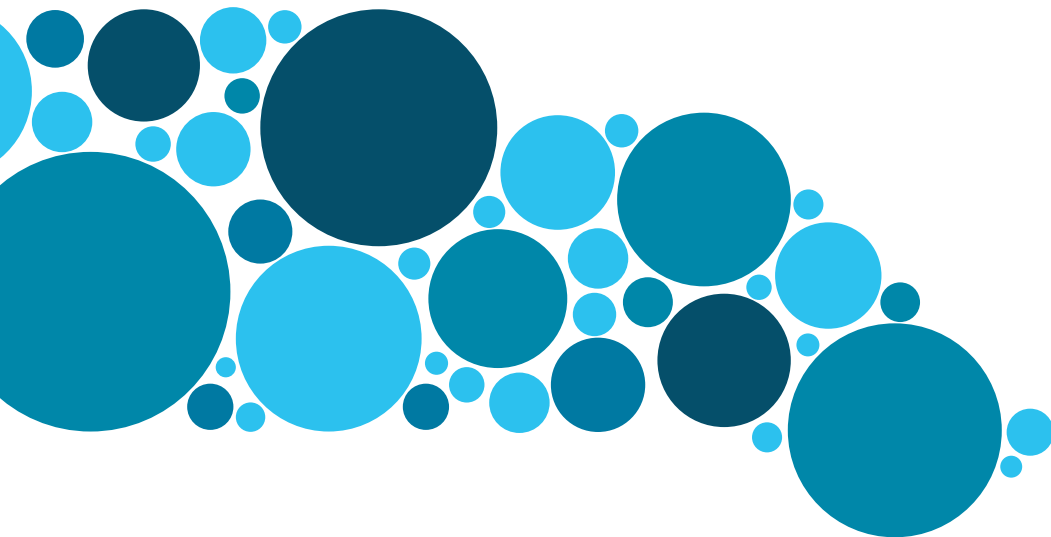
Graphic design : François Dumas, DREAMaxes, Geneva

English translation : Viviane Lowe Translation + Training, Versoix

Printing : Imprimerie Lenzi, Geneva

The Economic survey is available in English and in French at [www.geneva-finance.ch](http://www.geneva-finance.ch)

© October 2015 Geneva Financial Center



Geneva Financial Center

Chemin Rieu 17

P.O. Box 319

1211 Geneva 17

+41 (0)22 849 19 19

[www.geneve-finance.ch](http://www.geneve-finance.ch)

[info@geneve-finance.ch](mailto:info@geneve-finance.ch)